



SINGAPOREAN NOTICES TO MARINERS

SECTION	CONTENT	Page
I	Affected Charts & Publications	1
II	New Charts and Publications	2
	Notices to Mariners and Chart Corrections	7
	Temporary and Preliminary Notices	10
	Cancelled Temporary and Preliminary Notices	12
III	Navigational Information	13
	Amendments to Publications	14
IV	Reprint of Maritime Safety Information	15
V	Extract of Admiralty Notices to Mariners for Dual-Badged Charts	17

The monthly Notices to Mariners contain information required to keep charts and publications published by the Hydrographic Division, Maritime and Port Authority of Singapore up-to-date.

Mariners are requested to notify the Chief Hydrographer, Maritime and Port Authority of Singapore, immediately of the discovery of new or suspected dangers to navigation, observed changes to aids to navigation and ways Singaporean Charts and Publications can be improved. The Hydrographic Note on the back page should be used for this purpose.

Detailed information of charts and publications (coverage of charts, latest editions and distributors) are available on the Maritime and Port Authority of Singapore's Website: www.mpa.gov.sg

MPA Telegram Channel: MPA has launched a Telegram channel for notices and circulars. To stay updated, please subscribe via the following link <https://go.gov.sg/mpa-telegram> or scan the QR code:



<https://go.gov.sg/mpa-telegram>

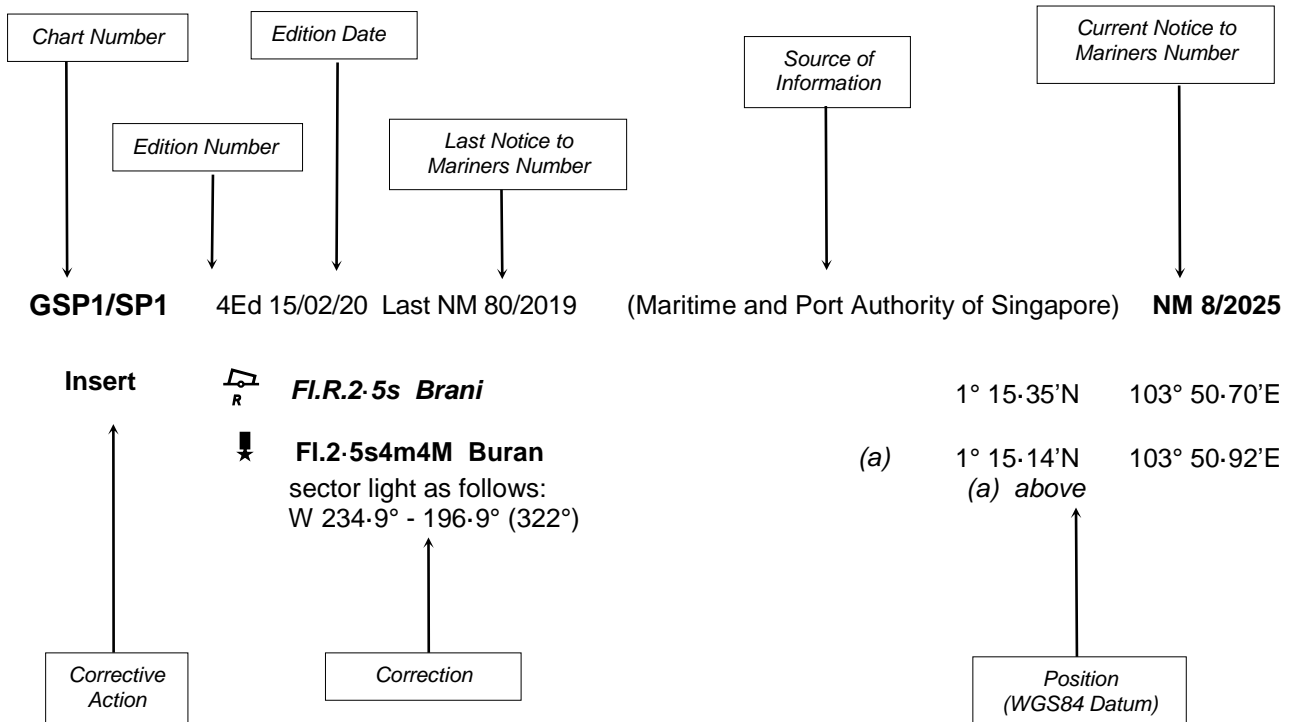
- [Singaporean Notice to Mariners](#)
- [Singaporean Charts](#)
- [Dual-Badged Charts](#)
- [Singapore ENC](#)
- [Malacca and Singapore Straits ENC](#)
- [Singapore Port Information](#)
- [Singapore Tide Tables](#)

Contact information:

Hydrographic Division
Maritime and Port Authority of Singapore
7B Keppel Road
#20-00 Tanjong Pagar Complex
Singapore 089055
Tel : 1800 272 7777 / (65) 6272 7777
Email : hydrographic@mpa.gov.sg

EXPLANATION OF FORMAT

The elements of a typical chart correction are explained below.



Notes:

- Notice to Mariners number followed by:
T indicates a Temporary Notice (eg. **NM 9T/2025**).
P indicates a Preliminary Notice (eg. **NM 10P/2025**).
- Bearings are true reckoned clockwise from 000° to 359°; those relating to lights are from seaward.
- Heights and elevations are above Mean High Water Springs.
- # indicates where amendments are made.
- * indicates source from Maritime and Port Authority of Singapore.

I
AFFECTED CHARTS AND PUBLICATIONS

INDEX OF NOTICES

NOTICE NO.	DESCRIPTION	PAGE NO.
	New Charts and Publications	2 – 6
*55	Numerical Index of Notices to Mariners of 2025	7
*56, *57	Singaporean Chart GSP1/SP1	8
58	Singaporean Chart 201	8
*56, *57	Singaporean Chart 202	8
*59	Singaporean Chart 500	9
*59	Singaporean Chart 501	9
*60P, 61P, 62P, 63P	Temporary and Preliminary Notices	10 - 11
-	Cancelled Temporary and Preliminary Notices	12
*64	Singapore Port Marine Notices/Circulars	13
*65	Amendments to Publications	14
-	Reprint of Maritime Safety Information	15 – 16
-	Extract of Admiralty Notices to Mariners for Dual-Badged Charts	17 – 18

*Source: Maritime and Port Authority of Singapore

II NEW CHARTS AND PUBLICATIONS

NEW EDITION DUAL BADGED CHARTS PUBLISHED ON 5th JUNE 2025

Chart Number	: 4042
Title	: Indonesia, Malaysia and Singapore Changi to Pulau Mungging And Tanjung Buntan to Tanjung Tondang
Coverage	: Lat 01°09·55'N 01°21·75'N Long 104°01·70'E 104°19·50'E
Scale	: 1 : 30 000
Date Published	: 5 th June 2025
Size of Chart	: 1100.6 x 749.5 mm
Description	: This new edition includes updated surveys, changes to topography and aids to navigation. The existing chart of the same number published on 13 th May 2021 has been superseded.

Chart Number	: 4043
Title	: Malaysia and Singapore Kuala Johor and Sungai Johor
Coverage	: Lat 01°16·10'N 01°34·00'N Long 103°57·90'E 104°10·00'E
Scale	: 1 : 30 000
Date Published	: 5 th June 2025
Size of Chart	: 748.1 x 1099.6 mm
Description	: This new edition includes updated surveys, changes to topography and aids to navigation. The existing chart of the same number published on 6 th May 2021 has been superseded.

II NEW CHARTS AND PUBLICATIONS

NEW EDITION SINGAPORE ENC RELEASED ON 27th JUNE 2025

ENC Cell	: SG5C4043
Location	: Kuala Johor and Sungai Johor
Coverage	: Lat 01°16·10'N 01°27·50'N Long 103°59·80'E 104°10·00'E
Compilation Scale	: 1 : 22 000
Date Released	: 27 th June 2025
Description	: This new edition includes updated surveys, changes to topography and aids to navigation.

The existing cell of the same number published on 27th August 2021 has been superseded-

NEW EDITION DUAL BADGED CHARTS TO BE PUBLISHED ON 14th AUGUST 2025

Chart Number	: 4030
Title	: West Jurong Anchorages And Temasek Fairway
Coverage	: Lat 01°11·05'N 01°17·00'N Long 103°36·70'E 103°40·70'E
Compilation Scale	: 1 : 10 000
Date to be Published	: 14 th August 2025
Size of Chart	: 742.0 x 1096.5 mm
Description	: This new edition includes updated surveys, changes to topography and aids to navigation.

The existing chart of the same number published on 29th Sept 2022 will be superseded.

II NEW CHARTS AND PUBLICATIONS

NEW EDITION DUAL BADGED CHARTS TO BE PUBLISHED ON 14th AUGUST 2025

Chart Number	: 4031
Title	: Western Approaches To Jurong Island
Coverage	: Lat 01°10·15'N 01°16·12'N Long 103°38·50'E 103°42·53'E
Compilation Scale	: 1 : 10 000
Date to be Published	: 14 th August 2025
Size of Chart	: 747.6 x 1100.2 mm
Description	: This new edition includes updated surveys, changes to topography and aids to navigation. The existing chart of the same number published on 29 th Oct 2020 will be superseded.

Chart Number	: 4033
Title	: Tuas Bay, West Jurong Channel And Pesek Basin
Coverage	: Lat 01°15·00'N 01°19·05'N Long 103°36·80'E 103°42·70'E
Compilation Scale	: 1 : 10 000
Date to be Published	: 14 th August 2025
Size of Chart	: 1094.4 x 746.4 mm
Description	: This new edition includes updated surveys, changes to topography and aids to navigation. The existing chart of the same number published on 8 th Oct 2020 will be superseded.

II NEW CHARTS AND PUBLICATIONS

NEW EDITION SINGAPORE ENC TO BE RELEASED ON 14th JUNE 2025

ENC Cell	: SG5C4030
Location	: West Jurong Anchorages and Temasek Fairway
Coverage	: Lat 01°11·05'N 01°16·30'N Long 103°36·70'E 103°40·64'E
Compilation Scale	: 1 : 8 000
Date to be Published	: 14 th August 2025
Description	: This new edition includes updated surveys, changes to topography and aids to navigation.

The existing cell of the same number published on 29th Sept 2022 will be superseded.

ENC Cell	: SG5C4031
Location	: Western Approaches to Jurong Island
Coverage	: Lat 01°10·15'N 01°12·25'N Long 103°42·53'E 103°38·50'E
Compilation Scale	: 1 : 8 000
Date to be Published	: 14 th August 2025
Description	: This new edition includes updated surveys, changes to topography and aids to navigation.

The existing cell of the same number published on 20th Aug 2021 will be superseded.

II NEW CHARTS AND PUBLICATIONS

NEW EDITION SINGAPORE ENC TO BE RELEASED ON 14th AUGUST 2025

ENC Cell : SG5C4032

Location : Sinki Fairway

Coverage : Lat 01°12·25'N 01°16·30'N
Long 103°40·64'E 103°42·58'E

Compilation Scale : 1 : 8 000

Date to be Released : 14th August 2025

Description : This new edition includes updated surveys, changes to topography and aids to navigation.

The existing cell of the same number published on 29th Sept 2022 will be superseded.

ENC Cell : SG5C4033

Location : Tuas Bay, West Jurong Channel and Pesek Basin

Coverage : Lat 01°19·05'N 01°16·30'N
Long 103°42·70'E 103°37·60'E

Compilation Scale : 1 : 8 000

Date to be Released : 14th August 2025

Description : This new edition includes updated surveys, changes to topography and aids to navigation.

The existing cell of the same number published on 18th Oct 2022 will be superseded.

II

NOTICES TO MARINERS AND CHART CORRECTIONS

***(NM 55/2025) NUMERICAL INDEX OF NOTICES TO MARINERS OF 2025 (1 TO 54)**

MONTH	NOTICES TO MARINERS NO.
JANUARY 2025	1 to 12T
FEBRUARY 2025	13 to 22
MARCH 2025	23 to 28
APRIL 2025	29 to 40T
MAY 2025	41 to 44
JUNE 2025	45 to 54

CHART NO.	PUBLISHED	YEAR	NOTICES TO MARINERS NO.
GSP1/SP1	9 Ed 15/01/25	2025	13-14-19-23-24-25-29-30-31-32-45-46-47-48-49-50-51
200	4 Ed 1/09/15	2025	-
201	6 Ed 15/09/17	2025	15
202	8 Ed 15/09/16	2025	04-05-29-33-34-35-41
500	8 Ed 15/09/17	2025	04-13-19-25-29-46-47-48-49-50
501	7 Ed 1/09/15	2025	06-13-19-25-26-29-30-41-46-47-48-49-50
502	9 Ed 15/10/21	2025	02-03-14-29-32
503	5 Ed 15/08/14	2025	05-29-33-42

II

NOTICES TO MARINERS AND CHART CORRECTIONS

GSP1/SP1 9 Ed 15/01/25 Last NM 51/2025 (Maritime and Port Authority of Singapore) ***NM 56/2025**

Insert limit of being reclaimed, pecked line, joining:

a) 1°13·30'N 103°37·78'E
 b) 1°13·30'N 103°39·42'E
 and
 c) 1°13·04'N 103°39·51'E
 d) 1°12·66'N 103°38·68'E
 e) 1°12·71'N 103°38·65'E

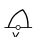

Delete limit of working area , joining

1°13·30'N 103°38·48'E
 (b)above
 and
 (c)above
 (d)above
 1°12·75'N 103°38·64'E

limit of being reclaimed, pecked line, joining:

a)above
 1°13·30'N 103°37·78'E
 1°12·97'N 103°37·94'E
 1°13·19'N 103°38·41'E
 1°12·71'N 103°38·65'E

(Maritime and Port Authority of Singapore) ***NM 57/2025**

Replace  *Rasu, Fl(4)Y.15s, AIS with*  *Rasu, Fl(4)Y.15s,* 1°11·80'N 103°39·55'E

201 6 Ed 15/09/17 Last NM 15/2025 (Royal Malaysian Navy Notice No.05/109/2025) **NM 58/2025**

Amend light to, Fl.5s16m13M 1°50·67'N 102°42·11'E

*Source: Maritime and Port Authority of Singapore

II

NOTICES TO MARINERS AND CHART CORRECTIONS

202 8 Ed 15/09/16 Last NM 41/2025 (Maritime and Port Authority of Singapore) ***NM 56/2025**

Insert limit of being reclaimed, pecked line, joining: a) 1°13·30'N 103°37·78'E

b) 1°13·30'N 103°39·42'E

c) 1°13·04'N 103°39·51'E

d) 1°12·66'N 103°38·68'E

e) 1°12·71'N 103°38·65'E

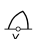
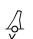
Delete limit of being reclaimed, pecked line, joining: a) above

1°12·97'N 103°37·94'E

1°13·19'N 103°38·41'E

e) above

Replace (Maritime and Port Authority of Singapore) ***NM 57/2025**

 *Rasu, Fl(4)Y. 15s, AIS with*  *Rasu, Fl(4)Y. 15s,* 1°11·80'N 103°39·55'E

500 8 Ed 15/09/17 Last NM 50/2025 (Maritime and Port Authority of Singapore) ***NM 59/2025**

Insert the accompanying block, centred on: 1°12·79'N 103°38·86'E

501 7 Ed 01/09/15 Last NM 50/2025 (Maritime and Port Authority of Singapore) ***NM 59/2025**

Insert the accompanying block, centred on: 1°12·58'N 103°38·77'E

*Source: Maritime and Port Authority of Singapore

II

TEMPORARY AND PRELIMINARY NOTICES

***(NM 60P/2025) : LEAST DEPTHS CHANGED AT PULAU BUKOM**

Description : 1. Least depths alongside have changed for the following berths:

Berth	Depth Alongside (Year Surveyed)
OS13 (Pulau Ular)	10·3m (2025)
OSECC	8·1m (2025)

2. Mariners are advised to navigate with caution.

Chart affected : Dual Badged BA4032

ENC affected : SG5C4032

***(NM 61P/2025) : LEAST DEPTHS CHANGED AT PULAU BUSING**

Description : 1. Least depths alongside have changed for the following berths:

Berth	Depth Alongside (Year Surveyed)
OTS2	15·2m (2025)
OTS3	13·2m (2025)
OTS4	11·8m (2025)
OTS6W	7·0m (2025)
OTS6E	10·7m (2025)
OTS10	15·9m (2025)

2. Mariners are advised to navigate with caution.

Chart affected : Dual Badged BA4032

ENC affected : SG5C4032

*Source: Maritime and Port Authority of Singapore

II TEMPORARY AND PRELIMINARY NOTICES

***(NM 62P/2025) : LEAST DEPTHS CHANGED AT MARINA SOUTH WHARF**

Description : 1. Least depths alongside have changed for the following berths:

Berth	Depth Alongside (Year Surveyed)
CM01	11·0m (2025)
CM02	10·8m (2025)

2. Mariners are advised to navigate with caution.

Chart affected : Dual Badged BA4037

ENC affected : SG5C4037

***(NM 63P/2025) : WRECK EXISTS WITHIN MOORING AREA FOR HARBOUR CRAFT OFF WEST COAST PIER**

Description : 1. A wreck with least depth 4·6m below CD, at position Lat 1°17·649'N Long 103°45·311'E, exists within mooring area for harbour craft off West Coast Pier.

2. Mariners are advised to navigate with caution.

Charts affected : Singaporean GSP1/SP1, Dual Badged BA4034

ENC affected : SG5C4034

*Source: Maritime and Port Authority of Singapore

II TEMPORARY AND PRELIMINARY NOTICES

Cancelled Temporary and Preliminary Notices

<i>No. of Notices</i>	<i>Subject</i>	<i>Charts Affected</i>
75P/2024	Wreck exists within mooring area for Harbour Craft off West Coast Pier	Singaporean Chart GSP1/SP1 Dual Badged BA4034 Singaporean ENC SG5C4034
63T/2024	Temporary special purpose buoys have been established at northern coast of Singapore	Singaporean Chart GSP1/SP1 Dual Badged BA4038,BA4044 Singaporean ENC SG5C4038, SG5C4044

III NAVIGATIONAL INFORMATION

*(NM 64/2025) SINGAPORE PORT MARINE NOTICES / CIRCULARS

The Port Marine Notices/Circulars shortlisted below would be of particular interest to Mariners. Details and complete list of Port Marine Notices/Circulars are available at this link:

<http://www.mpa.gov.sg/web/portal/home/port-of-singapore/circulars-and-notices>

PMC No. Subject

07/2025	Deferred renewal of bunker surveying company licence of Lighthouse Marine & Inspection Services Pte. Ltd.
08/2025	Notice of non-renewal of bunker supplier licence and bunker craft operator licence of Hai Yin Marine Pte. Ltd.

PMN No. Subject

64/2025	Installation of temporary passenger jetty and roll-on / roll-off ramp at Eastern Pulau Sudong
65/2025	Construction of containment bunds at Tuas View Extension
69/2025	Clearing of seabed for proposed waterfront development as part of Resorts World Sentosa development at 8 Sentosa Gateway Southern Island planning area
70/2025	Reinforced concrete, structural steel and ancillary works at Changi East
71/2025	Inspection and testing of jetty structures and pontoon at Pulau Seringat
73/2025	Relocation of jetty at Maritime Square
74/2025	Structural inspection and repair of existing wings of time at Siloso beach, Sentosa
77/2025	Bulk carrier operations at Tuas Terminal phase 2 project area
78/2025	Demolition of Raffles Pier at Tuas Bay
80/2025	Works at Tuas Terminal phase 2

*Source: Maritime and Port Authority of Singapore

III AMENDMENTS TO PUBLICATIONS

*(NM 65/2025) UPDATING OF PUBLICATION “SINGAPORE PORT INFORMATION 2025”

The Singapore Port Information 2025 including the following updates can be accessed directly from MPA Website:

<https://www.mpa.gov.sg/who-we-are/newsroom-resources/publications/singapore-port-information>

CHARACTERISTICS OF AIDS TO NAVIGATION

1. Page 57

SINKI FAIRWAY

Amend the following:

Name Of Beacon / Buoy	Position Lat. N Long. E Deg Min	Structure, Colour & Shape	Light Characteristic	Owner
Rasu Buoy	01°11·796' 103°39·549'	Yellow pillar	Fl(4)Y.15s	MPA

2. Page 62

SELAT SUDONG

Amend the following:

Name Of Beacon / Buoy	Position Lat. N Long. E Deg Min	Structure, Colour & Shape	Light Characteristic	Owner
DHI-RC-01 Buoy	01°11·964' 103°44·060'	Yellow pillar with 'X' top-mark	Fl.Y.5s	DHI Water & Environment (S) Pte Ltd

3. Page 69

APPROACHES TO MARINA RESERVOIR

Amend the following:

Name Of Beacon / Buoy	Position Lat. N Long. E Deg Min	Structure, Colour & Shape	Light Characteristic	Owner
Marina East 2 Buoy	01°17·299' 103°53·430'	Yellow pillar	Fl.Y.2,5s	MPA
Marina East 3 Buoy	01°17·596' 103°53·880'	Yellow pillar	Fl.Y.2,5s	MPA

*Source: Maritime and Port Authority of Singapore

IV

REPRINT OF MARITIME SAFETY INFORMATION

TT418

WEST BOUND DEEP DRAFT VESSELS AND VLCCS ARE REMINDED TO COMPLY WITH THE RULES OF VESSELS NAVIGATING THROUGH THE STRAITS OF MALACCA AND SINGAPORE (SOMS). THEY SHALL ALLOW FOR AN UKC OF AT LEAST 3.5 METRES AT ALL TIMES DURING THE ENTIRE PASSAGE THROUGH THE SOMS AND AS FAR AS IT IS SAFE AND PRACTICABLE, PROCEED AT A SPEED OF NOT MORE THAN 12 KTS OVER THE GROUND IN THE WESTBOUND LANE OF THE SINGAPORE STRAIT (BETWEEN SOUTH OF ST JOHN'S ISLAND & RAFFLES LIGHTHOUSE). THEY ARE ADVISED TO BROADCAST, 8 HOURS BEFORE ENTERING THE TSS, NAVIGATIONAL INFORMATION GIVING NAME, DEADWEIGHT, DRAUGHT, SPEED AND TIMES OF PASSING HORSBURGH LIGHTHOUSE AND RAFFLES LIGHTHOUSE.

TT961

VESSELS INTENDING TO CROSS THE TRAFFIC SEPARATION SCHEME (TSS) OR PRECAUTIONARY AREAS IN THE SINGAPORE STRAIT DURING THE HOURS OF DARKNESS ARE RECOMMENDED TO DISPLAY THE NIGHT SIGNALS CONSISTING OF 3 ALL ROUND GREEN LIGHTS IN A VERTICAL LINE AS DETAILED IN THE MARITIME AND PORT AUTHORITY OF SINGAPORE'S PORT MARINE CIRCULAR, 04 OF 2013 DATED 7 MAY 2013.

TT273

ALL VESSELS ARE ADVISED TO NAVIGATE WITH CAUTION, COMPLY WITH THE COLREGS, MAINTAIN VHF RADIO WATCH AND LISTEN TO TRAFFIC INFORMATION WHEN NAVIGATING IN THE SINGAPORE STRAIT AND PORT WATERS. MARINERS ARE ALSO ADVISED TO KEEP A GOOD LOOKOUT OF FREQUENT FERRIES CROSSING THE SINGAPORE STRAIT.

TT175

VESSELS IN EAST JOHOR STRAIT ARE ADVISED TO NAVIGATE WITH PARTICULAR ALERTNESS AND CAUTION WHEN NEAR THE PROJECT AREAS OFF PULAU TEKONG, CHANGI AND MALANG PAPAN AS SHALLOW WATER AREAS EXIST. VESSELS ARE REMINDED TO PROCEED AT A SAFE SPEED AND MAINTAIN A PROPER LOOK-OUT, PARTICULARLY FOR TUGS AND BARGES NAVIGATING NEAR THE PROJECT AREAS AND PASSENGER FERRIES CROSSING BETWEEN CHANGI AND PULAU TEKONG AND VICINITY OF PASIR GUDANG.

TT249 (AMENDED ON 28 JUNE 2025 1046Z)

THERE IS A REPORT OF AN UNAUTHORISED BOARDING ON 23 JUNE 2025 AT 0300LT IN POSITION LAT 01-03.6N LONG 103-41.0E. MARINERS ARE ADVISED TO KEEP A GOOD LOOK OUT AND MAINTAIN ANTI PIRACY WATCH.

TT248

THERE IS A REPORT OF AN UNAUTHORISED BOARDING ON 28 JUNE 2025 AT 0055LT IN POSITION LAT 01-04.89N LONG 103-42.93E. MARINERS ARE ADVISED TO KEEP A GOOD LOOK OUT AND MAINTAIN ANTI PIRACY WATCH.

TT247

THERE IS A REPORT OF AN UNAUTHORISED BOARDING ON 27 JUNE 2025 AT 0032LT IN POSITION LAT 01-05.70N LONG 103-43.85E. MARINERS ARE ADVISED TO KEEP A GOOD LOOK OUT AND MAINTAIN ANTI PIRACY WATCH.

TT246

BATU BERHENTI BUOY FI (2)5s IS NOT AT THE CHARTERED POSITION. ALL VESSELS NAVIGATING IN THE VICINITY ARE ADVISED TO NAVIGATE WITH CAUTION AND REPORT TO POCC UPON SIGHTING OF THE DRIFTING BATU BERHENTI BUOY.

TT245

THERE IS A REPORT OF AN UNAUTHORISED BOARDING ON 18 JUNE 2025 AT 2233LT IN POSITION LAT 01-08.10N LONG 103-45.50E. MARINERS ARE ADVISED TO KEEP A GOOD LOOK OUT AND MAINTAIN ANTI PIRACY WATCH.

TT234

VESSELS ARE ADVISED TO MAINTAIN A VIGILANT ANTI PIRACY WATCH, TAKE PREVENTIVE MEASURES AS PER BEST MANAGEMENT PRACTICE AND WHERE POSSIBLE, POST ADDITIONAL LOOKOUTS AND TURN ON REAR LIGHTING AT POOP DECK.

TT233 (Amended on 05 June 2025)

SOUTH CARDINAL (RACON D) BUOY IN POSITION LAT 01 03.592'N LONG 103 38.855'E WAS REPORTED UNLIT. ALL VESSELS PASSING IN THE VICINITY ARE ADVISED TO NAVIGATE WITH EXTRA CAUTION

TT201

AN ISOLATED DANGER BUOY FL(2)W.10S AT POSITION LAT 01-18.125'N LONG 103-36.945'E TO MARK A PARTIALLY SUBMERGED DREDGER KSE HITACHI GO HAS BEEN DEPLOYED. A VIRTUAL ATON WITH MMSI NO 995636004 OF THE SAME CHARACTERISTIC HAS ALSO BEEN DEPLOYED IN THE SAME POSITION. ALL VESSELS NAVIGATING IN THE VICINITY ARE ADVISED TO NAVIGATE WITH CAUTION.

IV**REPRINT OF MARITIME SAFETY INFORMATION**

TT147 (AMENDED 122200H JAN 25)

A SUNKEN VESSEL "SILVER SINCERE" HAS BEEN REPORTED AT POSITION LAT 01-17.85N LONG 104-22.82E, APPROXIMATELY 217 DEGREES AND 2.5 NM FROM HORSBURGH LIGHTHOUSE. A VIRTUAL ATON (ISOLATED DANGER MARK) WITH MMSI NUMBER 995636002 HAS BEEN ESTABLISHED AT THE SAME LOCATION TO MARK THE SUNKEN VESSEL.

TT643

THERE IS REPORT OF CONCENTRATION OF FISHING VESSELS OBSERVED IN THE EASTBOUND TRAFFIC LANE IN THE VICINITY BETWEEN BUFFALO ROCK AND BATU BERHANTI. ALL VESSELS ARE ADVISED TO PROCEED AT A SAFE SPEED, KEEP A SHARP LOOK OUT AND NAVIGATE WITH EXTREME CAUTION AT ALL TIME.

TT642

ALL MARINERS NAVIGATING THROUGH THE STRAIT OF SINGAPORE ARE REMINDED TO MAINTAIN CLOSE AND CONTINUOUS MONITORING OF VESSEL-S POSITION. IN DETERMINING RISK OF GROUNDING, DIFFERENT METHODS OF POSITION FIXING SHOULD ALSO BE USED AS MEANS OF CROSS-CHECKING.

TT426

ALL MARINERS ARE REMINDED TO NAVIGATE WITH CAUTION IN THE PRECAUTIONARY AREAS AND TSS ,MAINTAIN A GOOD LOOKOUT FOR CROSSING TRAFFIC. VESSELS INTENDING TO CROSS THE TSS SHALL DO SO ONLY WHEN IT IS SAFE AND SHALL AT ALL TIMES COMPLY WITH THE COLREGS.

TT399

VESSELS ARRIVING TO SINGAPORE OR TRANSITING THROUGH THE STRAIT ARE RECOMMENDED TO UPDATE THEIR DESTINATION ACCURATELY IN THE AIS TO ENHANCE SITUATIONAL AWARENESS FOR OTHER TRAFFIC IN THE VICINITY. EG: SG-PEBGB FOR PILOT EASTERN BOARDING GROUND BRAVO.

TT363

MARINERS ARE REMINDED NOT TO ANCHOR IN ALL AREAS IN THE TSS ,INCLUDING PRECAUTIONARY AREAS OF THE STRAITS OF MALACCA AND SINGAPORE AS WELL AS BETWEEN THE LANDWARD LIMITS OF THE TSS AND APPROACHES TO THE PORTS. VESSELS ENTERING ANY PORT IN ANY LITTORAL STATES ARE TO ANCHOR IN THE ANCHORAGES DESIGNATED BY THE RESPECTIVE LITTORAL STATES. MARINERS ARE ALSO REMINDED THAT EVERY CARE SHOULD BE TAKEN TO AVOID ANCHORING IN THE VICINITY OF SUBMARINE CABLES OR PIPELINES.

ISSUED BY SINGAPORE PORT OPERATIONS CONTROL CENTRE (as at 30th June 2025)

V

EXTRACT OF ADMIRALTY NOTICES TO MARINERS FOR DUAL BADGED CHARTS

These notices can also be accessed directly from UKHO Website:

<http://www.admiralty.co.uk/maritime-safety-information/admiralty-notices-to-mariners>

2573* SINGAPORE - NM Blocks.

Source: Maritime and Port Authority of Singapore

Chart 4038 [previous update New Edition 03/04/2025] WGS84 DATUM

Insert the accompanying block, centred on: 1° 18'·3N., 103° 37'·1E.

Chart 4040 [previous update 2054/25] WGS84 DATUM

Insert the accompanying block, centred on: 1° 18'·3N., 103° 37'·1E.

2557(T)/25 SINGAPORE - Buoy. Virtual aid to navigation. Wreck.

Source: Maritime and Port Authority of Singapore

1. A sunken vessel, 'KSE HITACHI GO', is located at position 1° 18'·12N., 103° 37'·00E.
2. A virtual aid to navigation (V-AIS), isolated danger topmark, with MMSI no. 995636004 has been established at position 1° 18'·12N., 103° 36'·95E. to mark the sunken vessel.
3. An isolated danger buoy, with light characteristics Fl(2)10s, has also been established at the same position.
4. Mariners are advised to navigate with caution in the area.
(WGS84 DATUM)

Charts affected - 4038 - 4040

2660* SINGAPORE - Buoyage.

Source: Maritime and Port Authority of Singapore

Chart 4035 [previous update 2053/25] WGS84 DATUM

Insert  Fl.Y.3s (sync) ADCP-TSS3 1° 15'·613N., 103° 49'·139E.



Fl.Y.3s (sync) ADCP-TSS1 1° 15'·593N., 103° 49'·355E.

Chart 4037 [previous update 1571/25] WGS84 DATUM

Insert  Fl.Y.3s ADCP-TSS2 1° 15'·301N., 103° 49'·757E.


Chart 4039 [previous update 2054/25] WGS84 DATUM

Insert  Fl.Y.5s DHI-TSS-01 1° 12'·10N., 103° 44'·00E.



Fl.Y.5s DHI-RC-01 1° 12'·07N., 103° 44'·15E.

Chart 4040 [previous update 2573/25] WGS84 DATUM

Insert  Fl.Y.5s DHI-TSS-01 1° 12'·10N., 103° 44'·00E.



Fl.Y.5s DHI-RC-01 1° 12'·07N., 103° 44'·15E.

V

EXTRACT OF ADMIRALTY NOTICES TO MARINERS FOR DUAL BADGED CHARTS

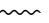
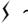

These notices can also be accessed directly from UKHO Website:

<http://www.admiralty.co.uk/maritime-safety-information/admiralty-notices-to-mariners>

2692 INDONESIA - Sumatera - Submarine power cable. (continued)

Source: Indonesian Notice 17/153/25

Chart 4041 [previous update 1771/25] WGS84 DATUM

Insert	submarine power cable,    , joining:	<p>1° 09'·21N., 103° 53'·65E. 1° 09'·21N., 103° 53'·67E. 1° 09'·21N., 103° 53'·72E. 1° 09'·21N., 103° 53'·80E. 1° 09'·22N., 103° 53'·88E. 1° 09'·23N., 103° 54'·01E. 1° 09'·23N., 103° 54'·04E. 1° 09'·27N., 103° 54'·14E. 1° 09'·29N., 103° 54'·18E. 1° 09'·32N., 103° 54'·17E.</p>
--------	---	---

Updated to Admiralty Notices to Mariners no. 26 of 2025 dated 26th June 2025

HYDROGRAPHIC NOTE - Instructions

1. Mariners are requested to notify the Chief Hydrographer, Maritime and Port Authority of Singapore, when new or suspected dangers to navigation are discovered, changes are observed in aids to navigation or where corrections to nautical publications may be necessary. Reports, which cannot be confirmed or are lacking in certain details, should not be withheld.
2. Any ambiguities of time, positioning and depth should be stressed and any firm expectation of being able to check the information provided on a following voyage should be mentioned.
3. Mariners using satellite position fixing systems, eg. GPS, should provide details of equipment and datum used (where applicable). Where bearings (true or magnetic) are taken visually or by radar to fix a position, it should include more than two objects in order to provide a check on its accuracy. A position may also be defined by bearing and distance from a conspicuous object eg. beacon, lighthouse etc.
4. The note should include a tracing or a digital image of the chart used and the details should be clearly marked.
5. Echo sounders frequently register greater depths than the advertised maximum depth for the equipment, eg. a trace appearing at 50 metres may be in fact be 550 metres or even 1050 metres for equipment whose maximum depth is 500 metres. Erroneous depths caused by 2nd transmission error can usually be recognised by the following:
 - (a) the tracing being weaker than normal for the depth registered,
 - (b) the trace appearing to pass through the transmission line,
 - (c) the feathery nature of the trace.
6. Upon receipt of a hydrographic note, a Notice to Mariners may be issued. The sender's vessel or name is quoted as the source unless the same information is also received in foreign Notices to Mariners.
7. Reports of shoals, uncharted dangers and defects in aids to navigation may also be made to the appropriate Singapore Port Operations Control Centre on VHF Channels 10, 12, 14, 68 or 73.

HYDROGRAPHIC NOTE

To:
Chief Hydrographer
Maritime and Port Authority of Singapore
7B Keppel Road #20-00 Tanjong Pagar Complex
Singapore 089055

Tel : 1800 272 7777 / (65) 6272 7777
Email : hydrographic@mpa.gov.sg

Sender's Contact Details :

Date :

Name of Vessel :

Address of Sender :

Tel :

Email :

Nature of Observation :

General Location :

Subject :

Position : Lat. Long.

Charts Used :

Date & Time of Observation :

Details :

.....

.....

Attachment :

Equipment Used :

Type of Position Fixing : GPS/DGPS Others :

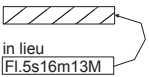
Type of Echo Sounder :

Name and Signature :

Ship's/Company's Stamp :



Caution : some computer printers might distort the tracings.
Users are advised to check and, if necessary, adjust settings on the printer



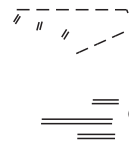
in lieu
Fl.5s16m13M

102°40'E
1°40'N

CORRECTION NO.	SNM EDN NO.	LAST CORR N NO.	CHART NO.	Location on Chart		
58	07	15	201		X	

Caution : some computer printers might distort the tracings.
Users are advised to check and, if necessary, adjust settings on the printer

1°20'N
103°40'E

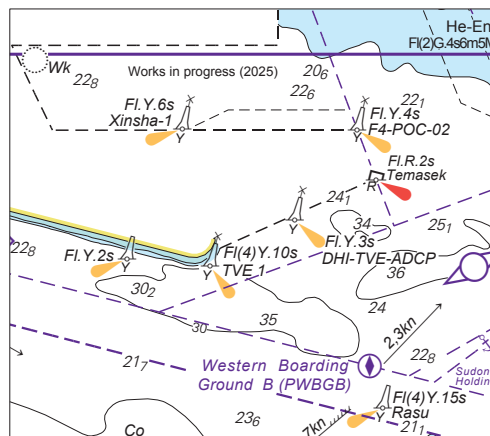


in lieu
Fl(4)Y.15s
Rasu

CORRECTION NO.	SNM EDN NO.	LAST CORR N NO.	CHART NO.	Location on Chart		
56 & 57	07	41	202	X		

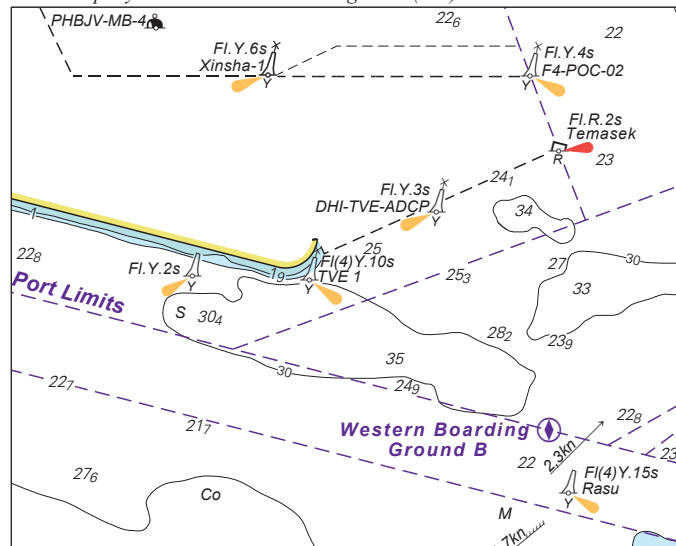
Caution : some computer printers might distort the tracings.
Users are advised to check and, if necessary, adjust settings on the printer

To accompany Notices to mariners. Image Size (mm) 64.5 x 57.0



Block for Chart No 500

To accompany Notice to Mariners. Image Size (mm) 89.2 x 71.4



Block for Chart No 501