



SINGAPOREAN NOTICES TO MARINERS

| SECTION | CONTENT | Page |
|---------|---|------|
| I | Affected Charts & Publications | 1 |
| II | New Charts and Publications | 2 |
| | Notices to Mariners and Chart Corrections | 3 |
| | Temporary and Preliminary Notices | 4 |
| | Cancelled Temporary and Preliminary Notices | 5 |
| III | Navigational Information | 6 |
| | Amendments to Publications | 7 |
| IV | Reprint of Maritime Safety Information | 8 |
| V | Extract of Admiralty Notices to Mariners for Dual-Badged Charts | 11 |

The monthly Notices to Mariners contain information required to keep charts and publications published by the Hydrographic Division, Maritime and Port Authority of Singapore up-to-date.

Mariners are requested to notify the Chief Hydrographer, Maritime and Port Authority of Singapore, immediately of the discovery of new or suspected dangers to navigation, observed changes to aids to navigation and ways Singaporean Charts and Publications can be improved. The Hydrographic Note on the back page should be used for this purpose.

Detailed information of charts and publications (coverage of charts, latest editions and distributors) are available on the Maritime and Port Authority Website: www.mpa.gov.sg

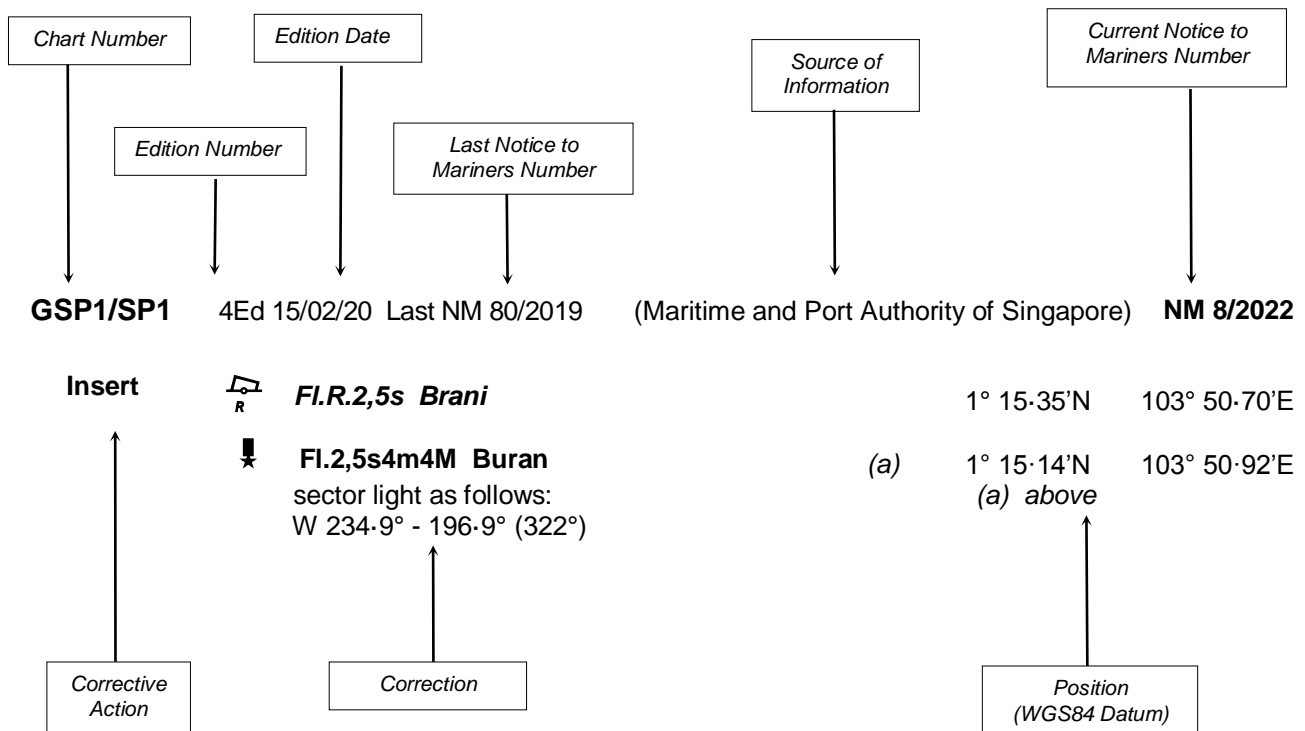
- [Singaporean Notice to Mariners](#)
- [Singaporean Charts](#)
- [Dual-Badged Charts](#)
- [Singapore ENC](#)
- [Malacca and Singapore Straits ENC](#)
- [Singapore Port Information](#)
- [Singapore Tide Tables](#)

Contact information:

Hydrographic Division
Maritime and Port Authority of Singapore
7B Keppel Road
#20-00 Tanjong Pagar Complex
Singapore 089055
Tel : 1800 272 7777 / (65) 6272 7777
Email : hydrographic@mpa.gov.sg

EXPLANATION OF FORMAT

The elements of a typical chart correction are explained below.



Notes:

- Notice to Mariners number followed by:
T indicates a Temporary Notice (eg. **NM 9T/2022**).
P indicates a Preliminary Notice (eg. **NM 10P/2022**).
- Bearings are true reckoned clockwise from 000° to 359°; those relating to lights are from seaward.
- Heights and elevations are above Mean High Water Springs.
- # indicates where amendments are made.
- * indicates source from Maritime and Port Authority of Singapore.

I
AFFECTED CHARTS AND PUBLICATIONS

INDEX OF NOTICES

| NOTICE NO. | DESCRIPTION | PAGE NO. |
|-------------------|---|-----------------|
| - | New Charts and Publications | 2 |
| *33P | Temporary and Preliminary Notices | 4 |
| *34 | Singapore Port Marine Notices/Circulars | 6 |
| *35 | Amendments to Publications | 7 |
| - | Reprint of Maritime Safety Information | 8 - 10 |
| - | Extract of Admiralty Notices to Mariners for Dual-Badged Charts | 11 - 14 |

*Source: Maritime and Port Authority of Singapore

II

NEW CHARTS AND PUBLICATIONS

NEW EDITION CHARTS PUBLISHED ON 30TH MAY 2022

| | | |
|-----------------------------|---|---|
| Chart Number | : | CHARTS FOR SMALL CRAFT |
| Title | : | Singapore Port Waters and Approaches - 2022/2023 Edition |
| Date to be Published | : | 30 th May 2022 |
| Size of Chart | : | 600.0 x 400.0 mm |
| Description | : | The publication contains 12 Small Craft Charts and related nautical information bound into an atlas. The symbols, abbreviations and term depicted on these charts are consistent with the International Hydrographic Organization Chart Standards and Specifications. |



Symbols for the locations of pleasure craft facilities and areas for sea sport activities such as board sailing, dinghy sailing, keelboat sailing, power-boating and water-skiing are also included and highlighted in red.

Chart of the same publication Edition 2020/2021 published on 28th April 2020 has been superseded.

II
NOTICES TO MARINERS AND CHART CORRECTIONS

NIL

II

TEMPORARY AND PRELIMINARY NOTICES

***(NM 33P/2022) : AMENDMENT OF DEPTH ALONGSIDE FOR S1, S2, S3, S6 AND S7 BERTH AT SEMBAWANG WHARVES**

- | 1. | Update | Feature | Position |
|----|---------------|--|--------------------------|
| | Replace | dredged depth to <i>11·5m (2021)</i> , centred on; | 1°27'·800N, 103°50'·080E |
| | Replace | dredged depth to <i>10·8m (2021)</i> , centred on; | 1°27'·710N, 103°50'·029E |
| | Replace | dredged depth to <i>9·5m (2021)</i> , centred on; | 1°27'·641N, 103°49'·990E |
| | Replace | dredged depth to <i>10·7m (2021)</i> , centred on; | 1°27'·738N, 103°49'·988E |
| | Replace | dredged depth to <i>12·0m (2021)</i> , centred on; | 1°27'·824N, 103°50'·037E |
2. These changes will be included in Dual-Badged BA4044 (Inset C).

Chart affected : Dual Badged BA4044 (Inset C)

*Source: Maritime and Port Authority of Singapore

II TEMPORARY AND PRELIMINARY NOTICES

Cancelled Temporary and Preliminary Notices

| <i>No. of Notices</i> | <i>Subject</i> | <i>Charts Affected</i> |
|---------------------------|---|---|
| 110P/2021 | Amendment to depth alongside for S1 berth at Sembawang Wharves | Dual Badged BA4044 (Inset C) |
| 111P/2021 | Amendment to depth alongside for S2, S3 and S7 berth at Sembawang Wharves | Dual Badged BA4044 (Inset C) |
| 22T/2022 | Installation of working area buoys | Singaporean 202 & 503, MS3IK2EB & MS4NS2EB |

III NAVIGATIONAL INFORMATION

*(NM 34/2022)

SINGAPORE PORT MARINE NOTICES / CIRCULARS

The Port Marine Notices/Circulars shortlisted below would be of particular interest to Mariners. Details and complete list of Port Marine Notices/Circulars are available at this link:

<http://www.mpa.gov.sg/web/portal/home/port-of-singapore/circulars-and-notices>

PMC No.**Subject**

| | |
|---------|---|
| 08/2022 | Shore leave for crew working onboard vessels visiting the Port of Singapore |
| 09/2022 | DORSCON yellow precautionary measures |
| 10/2022 | Enhancement of the Maritime Singapore Green Initiative - Green Port Program (GPP) |
| 11/2022 | Changes to Pre-Arrival Notification |
| 12/2022 | Requirements for vessels arriving in the Port of Singapore during Covid-19 |

PMN No.**Subject**

| | |
|----------|---|
| 027/2022 | Mooring and unmooring of vessels off Changi General Purpose Anchorage |
| 030/2022 | Construction of jetty at Tuas View |
| 031/2022 | Dredging works in Temasek Fairway |
| 032/2022 | Soil investigation work in Banyan Basin |

*Source: Maritime and Port Authority of Singapore

III AMENDMENTS TO PUBLICATIONS

*(NM 35/2022) UPDATING OF PUBLICATION “SINGAPORE PORT INFORMATION 2022/2023”

LEAST DEPTHS OF ANCHORAGES

B WESTERN SECTOR

1. Page 105

Amend the following:

| No. | Anchorage | Depth (m) | Latitude (N) Longitude (E) |
|-----|--------------------------|-----------|-------------------------------|
| 22 | Raffles Reserved (ARAFR) | 11·7 | 1° 11·622' 103° 45·276' |
| 23 | Raffles Petroleum (ARP) | 11·3 | 1° 12·167' 103° 44·394' |

WHARVES AND BERTHS

2. Page 177

46 SEMBAWANG WHARVES (PSA SINGAPORE TERMINALS) (1°27·7'N, 103°50·1'E)

Amend the following:

| Berth | Length of Berth Box | Depth Alongside (Year Surveyed) | Approach Depth |
|-------|---------------------|---------------------------------|----------------|
| S1 | 228m | 11·5m (2021) | 11·4m |
| S2 | 152m | 10·8m (2021) | 10·7m |
| S3 | 153m | 9·5m (2021) | 9·3m |
| S4 | 116m | 9·4m (2021) | 9·3m |
| S5 | 167m | 9·2m (2021) | 9·3m |
| S6 | 136m | 10·7m (2021) | 10·7m |
| S7 | 230m | 12·0m (2021) | 11·7m |

*Source: Maritime and Port Authority of Singapore

IV REPRINT OF MARITIME SAFETY INFORMATION

The following Maritime Safety Information have been shortlisted, as they would be of particular interest to mariners.

TT418

WEST BOUND DEEP DRAFT VESSELS AND VLCCS ARE REMINDED TO COMPLY WITH THE RULES OF VESSELS NAVIGATING THROUGH THE STRAITS OF MALACCA AND SINGAPORE (SOMS). THEY SHALL ALLOW FOR AN UKC OF AT LEAST 3.5 METRES AT ALL TIMES DURING THE ENTIRE PASSAGE THROUGH THE SOMS AND AS FAR AS IT IS SAFE AND PRACTICABLE, PROCEED AT A SPEED OF NOT MORE THAN 12 KTS OVER THE GROUND IN THE WESTBOUND LANE OF THE SINGAPORE STRAIT (BETWEEN SOUTH OF ST JOHN'S ISLAND & RAFFLES LIGHTHOUSE). THEY ARE ADVISED TO BROADCAST, 8 HOURS BEFORE ENTERING THE TSS, NAVIGATIONAL INFORMATION GIVING NAME, DEADWEIGHT, DRAUGHT, SPEED AND TIMES OF PASSING HORSBURGH LIGHTHOUSE AND RAFFLES LIGHTHOUSE.

TT961

VESSELS INTENDING TO CROSS THE TRAFFIC SEPARATION SCHEME (TSS) OR PRECAUTIONARY AREAS IN THE SINGAPORE STRAIT DURING THE HOURS OF DARKNESS ARE RECOMMENDED TO DISPLAY THE NIGHT SIGNALS CONSISTING OF 3 ALL ROUND GREEN LIGHTS IN A VERTICAL LINE AS DETAILED IN THE MARITIME AND PORT AUTHORITY OF SINGAPORE'S PORT MARINE CIRCULAR, 04 OF 2013 DATED 7 MAY 2013.

TT273

ALL VESSELS ARE ADVISED TO NAVIGATE WITH CAUTION, COMPLY WITH THE COLREGS, MAINTAIN VHF RADIO WATCH AND LISTEN TO TRAFFIC INFORMATION WHEN NAVIGATING IN THE SINGAPORE STRAIT AND PORT WATERS. MARINERS ARE ALSO ADVISED TO KEEP A GOOD LOOKOUT OF FREQUENT FERRIES CROSSING THE SINGAPORE STRAIT.

TT175

VESSELS IN EAST JOHOR STRAIT ARE ADVISED TO NAVIGATE WITH PARTICULAR ALERTNESS AND CAUTION WHEN NEAR THE PROJECT AREAS OFF PULAU TEKONG, CHANGI AND MALANG PAPAN AS SHALLOW WATER AREAS EXIST. VESSELS ARE REMINDED TO PROCEED AT A SAFE SPEED AND MAINTAIN A PROPER LOOK-OUT, PARTICULARLY FOR TUGS AND BARGES NAVIGATING NEAR THE PROJECT AREAS AND PASSENGER FERRIES CROSSING BETWEEN CHANGI AND PULAU TEKONG AND VICINITY OF PASIR GUDANG.

TT849

THERE IS A REPORT OF UNAUTHORISED BOARDING ON 28 MAY 2022 AT 0259LT IN POSITION LAT 01-06.90N Long 103-31.45E. MARINERS ARE ADVISED TO KEEP A GOOD LOOK OUT AND MAINTAIN ANTI-PIRACY WATCH

TT848

THERE IS A REPORT OF UNAUTHORISED BOARDING ON 27 MAY 2022 AT 2230LT IN POSITION LAT 01-07.78N Long 103-30.05E. MARINERS ARE ADVISED TO KEEP A GOOD LOOK OUT AND MAINTAIN ANTI-PIRACY WATCH

TT847 (AMENDED ON 290630LT)

THERE IS A REPORT OF SIGHTING A NUMBER OF CONTAINERS AT TWO APPROXIMATE POSITIONS.

- 1) LAT 01-08.433'N LONG 103-45.700'E
- 2) LAT 01-06.050N LONG 103-44.667'E

ALL VESSELS PASSING IN THE VICINITY ARE ADVISED TO KEEP A SHARP LOOKOUT AND NAVIGATE WITH CAUTION.

TT846

THERE IS A REPORT OF UNAUTHORISED BOARDING ON 21 MAY 2022 AT 0250LT IN POSITION LAT 01-01.9N Long 105-05.8E. MARINERS ARE ADVISED TO KEEP A GOOD LOOK OUT AND MAINTAIN ANTI-PIRACY WATCH.

TT844

THERE IS A REPORT OF UNAUTHORISED BOARDING ON 19 MAY 2022 AT 1345LT IN POSITION LAT 01-13.35N LONG 103-29.42E. MARINERS ARE ADVISED TO KEEP A GOOD LOOK OUT AND MAINTAIN ANTI-PIRACY WATCH.

IV REPRINT OF MARITIME SAFETY INFORMATION

The following Maritime Safety Information have been shortlisted, as they would be of particular interest to mariners.

TT843

BUFFALO ROCK ISOLATED DANGER BUOY FL(2) 5S IN POSITION 01-09.90'N 103-48.25'E IS REPORTED UNLIT. ALL VESSELS NAVIGATING IN THE VICINITY ARE ADVISED TO NAVIGATE WITH CAUTION.

TT841

CABLE SURVEY VESSEL "PATRA MARINE 3801" CARRYING OUT CABLE ROUTE FEASIBILITY SURVEY FROM SOUTH OF TUAS VIEW ALONG THE TSS EAST BOUND LANE OF SINGAPORE STRAIT IN VTIS SECTOR 7, 8 AND 9 FROM 11 MAY 2022 TO 6 JUN 2022. TRANSITTING VESSELS ARE ADVISED TO NAVIGATE WITH CAUTION, PROCEED AT SAFE SPEED AND KEEP WELL CLEAR OF THE CABLE VESSEL.

TT833

A 8.0 METRES WOODEN CRAFT HAD SUNK OFF RAFFLES LIGHTHOUSE IN POSITION Lat 01- 09.15N Long 103- 44.98E. ALL VESSELS IN THE VICINITY ARE REQUESTED TO NAVIGATE WITH CAUTION AND REPORT ANY SIGHTING TO SINGAPORE VTIS.

TT826

PKHDB-18 BUOY AT POSITION LAT 01-13.642N LONG 103-36.288E WITH LIGHT CHARACTER FL.G.2S IS MISSING. MARINERS ARE ADVISED TO NAVIGATE WITH CAUTION

TT783 (AMENDED ON 221130UTC NOV 21)

BANYAN BEACON AT POSITION 01-13.346 N 103-41.585E WAS REMOVED FOR MAINTENANCE. AN ISO DANGER BUOY WITH LIGHT CHARACTER , FL(2) 10S IS DEPLOYED AT POSITION 01-13.313N, 103-41.543E.

TT765 (Amended 200930H)

CONDUCTING OF RECLAMATION WORKS BOUNDED BY THE FOLLOWING COORDINATES FROM 1 SEP 2021.

- | | |
|--------------|------------|
| 1. 01-19.63N | 104-24.08E |
| 2. 01-20.05N | 104-24.08E |
| 3. 01-20.28N | 104-24.51E |
| 4. 01-20.26N | 104-24.59E |
| 5. 01-20.18N | 104-24.70E |
| 6. 01-20.06N | 104-24.78E |
| 7. 01-19.88N | 104-24.84E |
| 8. 01-19.68N | 104-24.83E |
| 9. 01-19.63N | 104-24.80E |

VESSELS PASSING IN THE VICINITY ARE ADVISED TO GIVE A WIDE BERTH AND NAVIGATE WITH CAUTION.

TT643

THERE IS REPORT OF CONCENTRATION OF FISHING VESSELS OBSERVED IN THE EASTBOUND TRAFFIC LANE IN THE VICINITY BETWEEN BUFFALO ROCK AND BATU BERHANT. ALL VESSELS ARE ADVISED TO PROCEED AT A SAFE SPEED, KEEP A SHARP LOOK OUT AND NAVIGATE WITH EXTREME CAUTION AT ALL TIME.

TT642

ALL MARINERS NAVIGATING THROUGH THE STRAIT OF SINGAPORE ARE REMINDED TO MAINTAIN CLOSE AND CONTINUOUS MONITORING OF VESSEL'S POSITION. IN DETERMINING RISK OF GROUNDING, DIFFERENT METHODS OF POSITION FIXING SHOULD ALSO BE USED AS MEANS OF CROSS-CHECKING.

TT426

ALL MARINERS ARE REMINDED TO NAVIGATE WITH CAUTION IN THE PRECAUTIONARY AREAS AND TSS, MAINTAIN A GOOD LOOKOUT FOR CROSSING TRAFFIC. VESSELS INTENDING TO CROSS THE TSS SHALL DO SO ONLY WHEN IT IS SAFE AND SHALL AT ALL TIMES COMPLY WITH THE COLREGS.

TT399

VESSELS ARRIVING TO SINGAPORE OR TRANSITING THROUGH THE STRAIT ARE RECOMMENDED TO UPDATE THEIR DESTINATION ACCURATELY IN THE AIS TO ENHANCE SITUATIONAL AWARENESS FOR OTHER TRAFFIC IN THE VICINITY. EG: SG-PEGB FOR PILOT EASTERN BOARDING GROUND BRAVO.

IV

REPRINT OF MARITIME SAFETY INFORMATION

The following Maritime Safety Information have been shortlisted, as they would be of particular interest to mariners.

TT363 (AMENDED ON 140821UTC APRIL 2019).

MARINERS ARE REMINDED NOT TO ANCHOR IN ALL AREAS IN THE TSS ,INCLUDING PRECAUTIONARY AREAS OF THE STRAITS OF MALACCA AND SINGAPORE AS WELL AS BETWEEN THE LANDWARD LIMITS OF THE TSS AND APPROACHES TO THE PORTS. VESSELS ENTERING ANY PORT IN ANY LITTORAL STATES ARE TO ANCHOR IN THE ANCHORAGES DESIGNATED BY THE RESPECTIVE LITTORAL STATES. MARINERS ARE ALSO REMINDED THAT EVERY CARE SHOULD BE TAKEN TO AVOID ANCHORING IN THE VICINITY OF SUBMARINE CABLES OR PIPELINES.

SR123 (AMENDED ON 100800UTC JUNE 2020).

SEA ROBBERIES ARE REPORTED IN THE SINGAPORE STRAIT. MARINERS ARE TO MAINTAIN A CONSTANT VISUAL AND RADAR WATCH FOR SMALL CRAFT AND REPORT ANY SUSPICIOUS ACTIVITIES IN THE SINGAPORE STRAIT TO VTIS SINGAPORE.

ISSUED BY SINGAPORE PORT OPERATIONS CONTROL CENTRE (as at 31st May 2022)

V

EXTRACT OF ADMIRALTY NOTICES TO MARINERS FOR DUAL BADGED CHARTS

These notices can also be accessed directly from UKHO Website:

<http://www.admiralty.co.uk/maritime-safety-information/admiralty-notices-to-mariners>

1622 SINGAPORE - Light.

Source: Maritime and Port Authority of Singapore

Chart 4030 [*previous update 685/22*] WGS84 DATUM

| | | | | |
|-------------|---|----------------------|---------------|----------------|
| Move |  | Fl.Y.2s5m TP2, from: | 1° 16'·728N., | 103° 38'·852E. |
| | | to: | 1° 16'·774N., | 103° 38'·972E. |

Chart 4033 [*previous update 685/22*] WGS84 DATUM

| | | | | |
|-------------|---|----------------------|---------------|----------------|
| Move |  | Fl.Y.2s5m TP2, from: | 1° 16'·728N., | 103° 38'·852E. |
| | | to: | 1° 16'·774N., | 103° 38'·972E. |

Chart 4038 [*previous update 284/22*] WGS84 DATUM

| | | | | |
|-------------|---|-------------|--------------|---------------|
| Move |  | Fl.Y, from: | 1° 16'·73N., | 103° 38'·85E. |
| | | to: | 1° 16'·77N., | 103° 38'·97E. |

Chart 4040 [*previous update 884/22*] WGS84 DATUM

| | | | | |
|-------------|---|-------------|--------------|---------------|
| Move |  | Fl.Y, from: | 1° 16'·73N., | 103° 38'·85E. |
| | | to: | 1° 16'·77N., | 103° 38'·97E. |

1801* SINGAPORE - Obstructions.

Source: Maritime and Port Authority of Singapore





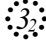


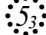
Chart 4043 [*previous update 5200/21*] WGS84 DATUM

| | | | | |
|---------------|---|-------|--------------|---------------|
| Insert |  | Obstn | 1° 24'·12N., | 103° 58'·68E. |
| |  | Obstn | 1° 24'·13N., | 103° 58'·72E. |

1818* SINGAPORE - Obstructions. Buoyage.

Source: Maritime and Port Authority of Singapore

Chart 4044 [*previous update 5092/21*] WGS84 DATUM

| | | | | |
|---------------|---|--------------------|--------------|---------------|
| Insert |  | Fl.G.3s RTS-LTA-S2 | 1° 27'·40N., | 103° 46'·83E. |
| |  | Fl.R.3s RTS-LTA-P2 | 1° 27'·37N., | 103° 46'·85E. |
| |  | Fl.G.3s RTS-LTA-S1 | 1° 27'·45N., | 103° 46'·93E. |
| |  | Fl.R.3s RTS-LTA-P1 | 1° 27'·42N., | 103° 46'·95E. |
| |  | Obstn | 1° 23'·52N., | 103° 56'·60E. |
| |  | Obstn | 1° 24'·15N., | 103° 56'·91E. |
| |  | Obstn | 1° 23'·94N., | 103° 57'·14E. |
| |  | Obstn | 1° 23'·87N., | 103° 57'·74E. |

V
EXTRACT OF ADMIRALTY NOTICES TO MARINERS
FOR DUAL BADGED CHARTS

These notices can also be accessed directly from UKHO Website:

<http://www.admiralty.co.uk/maritime-safety-information/admiralty-notices-to-mariners>

| | | |
|--|--------------|---------------|
|  <i>Obstn</i> | 1° 24'·12N., | 103° 58'·68E. |
|  <i>Obstn</i> | 1° 24'·13N., | 103° 58'·72E. |

Chart 4044 (Panel A, Serangoon Harbour) [*previous update 5092/21*] WGS84 DATUM

| | | | |
|---------------|--|---------------|----------------|
| Insert |  <i>Obstn</i> | 1° 24'·154N., | 103° 56'·906E. |
| |  <i>Obstn</i> | 1° 23'·943N., | 103° 57'·138E. |
| |  <i>Obstn</i> | 1° 23'·870N., | 103° 57'·737E. |
| |  <i>Obstn</i> | 1° 24'·120N., | 103° 58'·674E. |
| |  <i>Obstn</i> | 1° 24'·133N., | 103° 58'·722E. |

1917* SINGAPORE - Foul. Rock. NM Blocks.

Source: Maritime and Port Authority of Singapore

Chart 4036 [*previous update 884/22*] WGS84 DATUM

| | | | | |
|---------------|--|-----|---------------|----------------|
| Insert | + (25%) | (a) | 1° 10'·761N., | 103° 45'·096E. |
| Delete | former + (25%), close E of: | (a) | above | |
| Insert | limit of foul ground area, pecked line, joining: | | 1° 10'·694N., | 103° 45'·276E. |
| | | | 1° 10'·725N., | 103° 45'·316E. |
| | | | 1° 10'·704N., | 103° 45'·321E. |
| | | | 1° 10'·685N., | 103° 45'·292E. |

Chart 4039 [*previous update 884/22*] WGS84 DATUM

| | | | |
|---------------|-------------------------------------|-------------|--------------|
| Insert | the accompanying block, centred on: | 1° 10'·7N., | 103° 45'·2E. |
|---------------|-------------------------------------|-------------|--------------|

Chart 4040 [*previous update 1622/22*] WGS84 DATUM

| | | | |
|---------------|-------------------------------------|-------------|--------------|
| Insert | the accompanying block, centred on: | 1° 10'·8N., | 103° 45'·2E. |
|---------------|-------------------------------------|-------------|--------------|

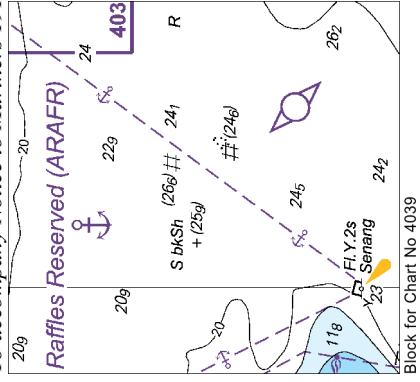
2141 INDONESIA - Sumatera - Radio reporting points.

Source: Indonesian Notice 52/671/21

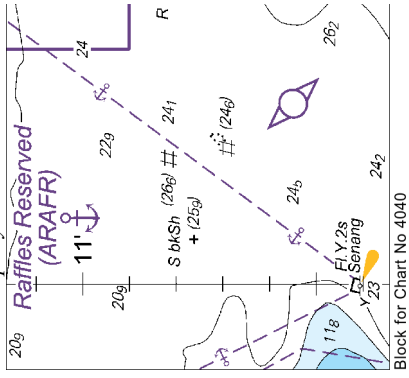
Chart 4042 [*previous update 1059/22*] WGS84 DATUM

| | | | |
|---------------|---|--------------|---------------|
| Insert |  , direction of vessel movement 166° | 1° 10'·34N., | 104° 10'·11E. |
| |  , direction of vessel movement 216° | 1° 09'·99N., | 104° 12'·18E. |

To accompany Notice to Mariners 1917/22. Image Size (mm) 51.5 by 49



To accompany Notice to Mariners 1917/22. Image Size (mm) 50.4 by 48.1



HYDROGRAPHIC NOTE - Instructions

1. Mariners are requested to notify the Chief Hydrographer, Maritime and Port Authority of Singapore, when new or suspected dangers to navigation are discovered, changes are observed in aids to navigation or where corrections to nautical publications may be necessary. Reports, which cannot be confirmed or are lacking in certain details, should not be withheld.
2. Any ambiguities of time, positioning and depth should be stressed and any firm expectation of being able to check the information provided on a following voyage should be mentioned.
3. Mariners using satellite position fixing systems, eg. GPS, should provide details of equipment and datum used (where applicable). Where bearings (true or magnetic) are taken visually or by radar to fix a position, it should include more than two objects in order to provide a check on its accuracy. A position may also be defined by bearing and distance from a conspicuous object eg. beacon, lighthouse etc.
4. The note should include a tracing or a digital image of the chart used and the details should be clearly marked.
5. Echo sounders frequently register greater depths than the advertised maximum depth for the equipment, eg. a trace appearing at 50 metres may be in fact be 550 metres or even 1050 metres for equipment whose maximum depth is 500 metres. Erroneous depths caused by 2nd transmission error can usually be recognised by the following:
 - (a) the tracing being weaker than normal for the depth registered,
 - (b) the trace appearing to pass through the transmission line,
 - (c) the feathery nature of the trace.
6. Upon receipt of a hydrographic note, a Notice to Mariners may be issued. The sender's vessel or name is quoted as the source unless the same information is also received in foreign Notices to Mariners.
7. Reports of shoals, uncharted dangers and defects in aids to navigation may also be made to the appropriate Singapore Port Operations Control Centre on VHF Channels 10, 12, 14, 68 or 73.

HYDROGRAPHIC NOTE

To:

Chief Hydrographer
Maritime and Port Authority of Singapore
7B Keppel Road #20-00 Tanjong Pagar Complex
Singapore 089055

Tel : 1800 272 7777 / (65) 6272 7777

Email : hydrographic@mpa.gov.sg

Sender's Contact Details :

Date :

Name of Vessel :

Address of Sender :

Tel : Fax :

Email :

Nature of Observation :

General Location :

Subject :

Position : Lat. Long.

Charts Used :

Date & Time of Observation :

Details :
.....
.....
.....

Attachment :

Equipment Used :

Type of Position Fixing : GPS / DGPS Others :

Type of Echo Sounder :

Name and Signature :

Ship's/Company's Stamp :