



## SINGAPOREAN NOTICES TO MARINERS

SECTION	CONTENT	Page
I	Affected Charts & Publications	1
II	New Charts and Publications	2
	Notices to Mariners and Chart Corrections	5
	Temporary and Preliminary Notices	6
	Cancelled Temporary and Preliminary Notices	7
III	Navigational Information	8
	Amendments to Publications	9
IV	Reprint of Maritime Safety Information	10
V	Extract of Admiralty Notices to Mariners for Dual-Badged Charts	12

The monthly Notices to Mariners contain information required to keep charts and publications published by the Hydrographic Division, Maritime and Port Authority of Singapore up-to-date.

Mariners are requested to notify the Chief Hydrographer, Maritime and Port Authority of Singapore, immediately of the discovery of new or suspected dangers to navigation, observed changes to aids to navigation and ways Singaporean Charts and Publications can be improved. The Hydrographic Note on the back page should be used for this purpose.

Detailed information of charts and publications (coverage of charts, latest editions and distributors) are available on the Maritime and Port Authority Website: [www.mpa.gov.sg](http://www.mpa.gov.sg)

- [Singaporean Notice to Mariners](#)

- [Singaporean Charts](#)

- [Dual-Badged Charts](#)

- [Singapore ENC](#)

- [Malacca and Singapore Straits ENC](#)

- [Singapore Port Information](#)

- [Singapore Tide Tables](#)

### Contact information:

Hydrographic Division

Maritime and Port Authority of Singapore

7B Keppel Road

#20-00 Tanjong Pagar Complex

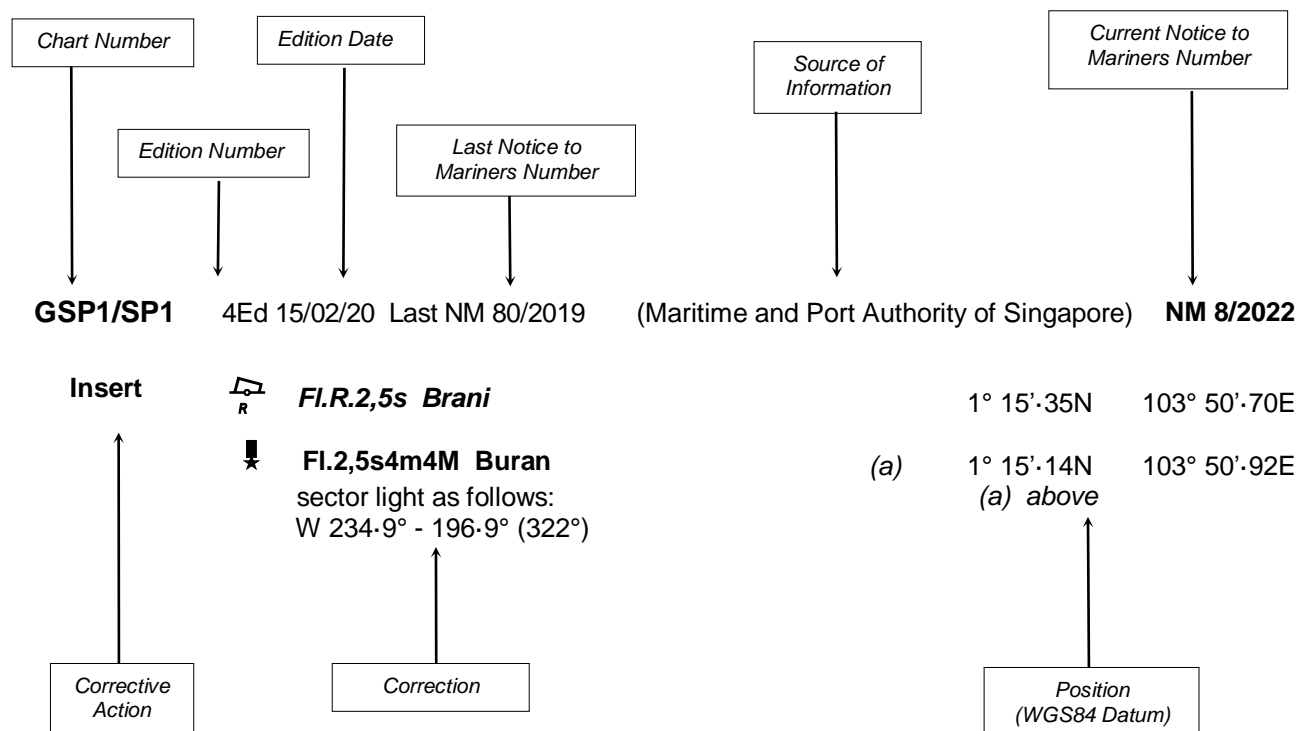
Singapore 089055

Tel : 1800 272 7777 / (65) 6272 7777

Email : [hydrographic@mpa.gov.sg](mailto:hydrographic@mpa.gov.sg)

## EXPLANATION OF FORMAT

The elements of a typical chart correction are explained below.



### Notes:

a) Notice to Mariners number followed by:

**T** indicates a Temporary Notice (eg. **NM 9T/2022**).

**P** indicates a Preliminary Notice (eg. **NM 10P/2022**).

b) Bearings are true reckoned clockwise from 000° to 359°; those relating to lights are from seaward.

c) Heights and elevations are above Mean High Water Springs.

d) # indicates where amendments are made.

e) \* indicates source from Maritime and Port Authority of Singapore.

I  
**AFFECTED CHARTS AND PUBLICATIONS**

**INDEX OF NOTICES**

<b>NOTICE NO.</b>	<b>DESCRIPTION</b>	<b>PAGE NO.</b>
-	New Charts and Publications	2 - 4
*52	Singaporean Chart GSP1/SP1	5
*52	Singaporean Chart 502	5
-	Temporary and Preliminary Notices	6
*53	Singapore Port Marine Notices/Circulars	8
*54	Amendments to Publications	9
-	Reprint of Maritime Safety Information	10 - 11
-	Extract of Admiralty Notices to Mariners for Dual-Badged Charts	12 - 13

\*Source: Maritime and Port Authority of Singapore

## II NEW CHARTS AND PUBLICATIONS

### NEW EDITION DUAL BADGED CHARTS PUBLISHED ON 29<sup>TH</sup> SEPTEMBER 2022

**Chart Number** : 4030

**Title** : Port of Singapore

**Coverage** : Lat 01° 11'·05N 01° 17'·00N  
Long 103° 36'·70E 103° 40'·70E

**Scale** : 1 : 10 000

**Date to be Published** : 29<sup>th</sup> September 2022

**Size of Chart** : 742.0 x 1096.5 mm

**Description** : This new edition includes updated surveys, changes to topography and aids to navigation.

The existing chart of the same number published on 29th October 2020 has been superseded.

---

**Chart Number** : 4032

**Title** : Port of Singapore  
Sinki Fairway

**Coverage** : Lat 01° 12'·25N 01° 16'·30N  
Long 103° 40'·20E 103° 46'·13E

**Scale** : 1 : 10 000

**Date to be Published** : 29<sup>th</sup> September 2022

**Size of Chart** : 1100.0 x 746.4 mm

**Description** : This new edition includes updated surveys, changes to topography and aids to navigation.

The existing chart of the same number published on 5th November 2020 has been superseded.

---

**Chart Number** : 4034

**Title** : Port of Singapore  
East Jurong Channel, Pasir Panjang Terminal and West Keppel Fairway

**Coverage** : Lat 01° 14'·50N 01° 18'·55N  
Long 103° 42'·70E 103° 48'·60E

**Scale** : 1 : 10 000

**Date to be Published** : 29<sup>th</sup> September 2022

**Size of Chart** : 1094.4 x 746.4 mm

**Description** : This new edition includes updated surveys, changes to topography and aids to navigation,

The existing chart of the same number published on 5th November 2020 has been superseded.

---

## II NEW CHARTS AND PUBLICATIONS

### NEW EDITION SINGAPORE ENC RELEASED ON 29<sup>TH</sup> SEPTEMBER 2022

**ENC Name** : SG5C4030

**Location** : West Jurong Anchorages and Temasek Fairway

**Coverage** : Lat 01° 11'·050N 01° 16'·300N  
Long 103° 36'·700E 103° 40'·640E

**Compilation Scale** : 1 : 8 000

**Date Released** : 29<sup>th</sup> September 2022

**Description** : This new edition includes updated surveys, changes to topography and aids to navigation.

The existing cell of the same number released on 29th October 2020 has been superseded.

---

**ENC Name** : SG5C4032

**Location** : Sinki Fairway

**Coverage** : Lat 01° 12'·250N 01° 16'·300N  
Long 103° 40'·640E 103° 45'·580E

**Compilation Scale** : 1 : 8 000

**Date Released** : 29<sup>th</sup> September 2022

**Description** : This new edition includes updated surveys, changes to topography and aids to navigation.

The existing cell of the same number released on 5th November 2020 has been superseded.

---

**ENC Name** : SG5C4034

**Location** : East Jurong Channel, Pasir Panjang Terminal and West Keppel Fairway

**Coverage** : Lat 01° 16'·300N 01° 18'·550N  
Long 103° 42'·700E 103° 46'·360E

**Compilation Scale** : 1 : 8 000

**Date Released** : 29<sup>th</sup> September 2022

**Description** : This new edition includes updated surveys, changes to topography and aids to navigation.

The existing cell of the same number released on 5th November 2020 has been superseded.

---

## II NEW CHARTS AND PUBLICATIONS

### NEW EDITION SINGAPORE ENC RELEASED ON 29<sup>TH</sup> SEPTEMBER 2022

**ENC Name** : SG5C4035

**Location** : Western Anchorages, Jong Fairway and Cruise Bay

**Coverage** : Lat 01° 10'·900N 01° 16'·900N  
Long 103° 45'·580E 103° 49'·425E

**Compilation Scale** : 1 : 8 000

**Date Released** : 29<sup>th</sup> September 2022

**Description** : This new edition includes updated surveys, changes to topography and aids to navigation.  
  
The existing cell of the same number released on 22nd October 2020 has been superseded.

---

### NEW EDITION SINGAPORE ENC RELEASED ON 18<sup>TH</sup> OCTOBER 2022

**ENC Name** : SG5C4033

**Location** : Tuas Bay, West Jurong Channel and Pesek Basin

**Coverage** : Lat 01° 16'·300N 01° 19'·050N  
Long 103° 37'·600E 103° 42'·700E

**Compilation Scale** : 1 : 8 000

**Date Released** : 18<sup>th</sup> October 2022

**Description** : The existing cell of the same number released on 20th August 2021 will be superseded.

---

**ENC Name** : SG5C4037

**Location** : Keppel Harbour, Tanjong Pagar Terminal and Approaches

**Coverage** : Lat 01° 12'·520N 01° 16'·590N  
Long 103° 49'·420E 103° 55'·340E

**Compilation Scale** : 1 : 8 000


**Date Released** : 18<sup>th</sup> October 2022

**Description** : The existing cell of the same number released on 20th August 2021 will be superseded.

---

## II

### NOTICES TO MARINERS AND CHART CORRECTIONS

<b>GSP1/SP1</b>	6 Ed 17/01/22 Last NM 47/2022	(Maritime Port Authority of Singapore)	<b>*NM 52/2022</b>
<b>Move</b>	 Q.Y CNB-2 from:	1°18'·10N	104°01'·00E
	to:	1°18'·10N	104°00'·81E
<hr/>			
<b>502</b>	9 Ed 15/10/21 Last NM 47/2022	(Maritime Port Authority of Singapore)	<b>*NM 52/2022</b>
<b>Move</b>	 Q.Y CNB-2 from:	1°18'·10N	104°01'·00E
	to:	1°18'·10N	104°00'·81E

---

\*Source: Maritime and Port Authority of Singapore

**II**  
**TEMPORARY AND PRELIMINARY NOTICES**

NIL



**II**  
**TEMPORARY AND PRELIMINARY NOTICES**

**Cancelled Temporary and Preliminary Notices**

NIL

### III NAVIGATIONAL INFORMATION

\*(NM 53/2022)

**SINGAPORE PORT MARINE NOTICES / CIRCULARS**

The Port Marine Notices/Circulars shortlisted below would be of particular interest to Mariners. Details and complete list of Port Marine Notices/Circulars are available at this link:

<http://www.mpa.gov.sg/web/portal/home/port-of-singapore/circulars-and-notices>

**PMC No.****Subject**

21/2022

Supply of Biofuel within the Port of Singapore to vessels

**PMN No.****Subject**

59/2022

Anchoring of vessel at Tuas View extension off VLCC

64/2022

Construction of marine viaduct off Woodlands jetty

69/2022

Reclamation and Marine Works at Tuas Western Coast—Stage 11

---

\*Source: Maritime and Port Authority of Singapore

### III AMENDMENTS TO PUBLICATIONS

\*(NM 54/2022) UPDATING OF PUBLICATION "SINGAPORE PORT INFORMATION 2022/2023"

#### CHARACTERISTICS OF AIDS TO NAVIGATION

##### CHANGI EAST

##### 1. Page 156

Amend the following:

Name Of Beacon / Buoy	Position Lat. N Long. E Deg Min	Structure, Colour & Shape	Light Characteristic	Owner
CNB-2 Buoy	01°18-098' 104°00-806'	Yellow pillar with 'X' topmark	Q.Y	RSN

##### CHANGI EAST (Cont/)

##### 2. Page 157

Amend the following:

Name Of Beacon / Buoy	Position Lat. N Long. E Deg Min	Structure, Colour & Shape	Light Characteristic	Owner
NEA-WRM-CNB Buoy	01°19-015' 104°03-082'	Yellow pillar with 'X' topmark	Oc(2)Y.6s	NEA

##### 3. Insert the following:

Name Of Beacon / Buoy	Position Lat. N Long. E Deg Min	Structure, Colour & Shape	Light Characteristic	Owner
DHI-CESS-2 Buoy	01°19-163' 104°03-129'	Yellow pillar with 'X' topmark	Fl.Y.5s	DHI Water & Environment (S) Pte Ltd

---

\*Source: Maritime and Port Authority of Singapore

## IV

### REPRINT OF MARITIME SAFETY INFORMATION

The following Maritime Safety Information have been shortlisted, as they would be of particular interest to mariners.

TT418

WEST BOUND DEEP DRAFT VESSELS AND VLCCS ARE REMINDED TO COMPLY WITH THE RULES OF VESSELS NAVIGATING THROUGH THE STRAITS OF MALACCA AND SINGAPORE (SOMS). THEY SHALL ALLOW FOR AN UKC OF AT LEAST 3.5 METRES AT ALL TIMES DURING THE ENTIRE PASSAGE THROUGH THE SOMS AND AS FAR AS IT IS SAFE AND PRACTICABLE, PROCEED AT A SPEED OF NOT MORE THAN 12 KTS OVER THE GROUND IN THE WESTBOUND LANE OF THE SINGAPORE STRAIT (BETWEEN SOUTH OF ST JOHN'S ISLAND & RAFFLES LIGHTHOUSE). THEY ARE ADVISED TO BROADCAST, 8 HOURS BEFORE ENTERING THE TSS, NAVIGATIONAL INFORMATION GIVING NAME, DEADWEIGHT, DRAUGHT, SPEED AND TIMES OF PASSING HORSBURGH LIGHTHOUSE AND RAFFLES LIGHTHOUSE.

TT961

VESSELS INTENDING TO CROSS THE TRAFFIC SEPARATION SCHEME (TSS) OR PRECAUTIONARY AREAS IN THE SINGAPORE STRAIT DURING THE HOURS OF DARKNESS ARE RECOMMENDED TO DISPLAY THE NIGHT SIGNALS CONSISTING OF 3 ALL ROUND GREEN LIGHTS IN A VERTICAL LINE AS DETAILED IN THE MARITIME AND PORT AUTHORITY OF SINGAPORE'S PORT MARINE CIRCULAR, 04 OF 2013 DATED 7 MAY 2013.

TT273

ALL VESSELS ARE ADVISED TO NAVIGATE WITH CAUTION, COMPLY WITH THE COLREGS, MAINTAIN VHF RADIO WATCH AND LISTEN TO TRAFFIC INFORMATION WHEN NAVIGATING IN THE SINGAPORE STRAIT AND PORT WATERS. MARINERS ARE ALSO ADVISED TO KEEP A GOOD LOOKOUT OF FREQUENT FERRIES CROSSING THE SINGAPORE STRAIT.

TT175

VESSELS IN EAST JOHOR STRAIT ARE ADVISED TO NAVIGATE WITH PARTICULAR ALERTNESS AND CAUTION WHEN NEAR THE PROJECT AREAS OFF PULAU TEKONG, CHANGI AND MALANG PAPAN AS SHALLOW WATER AREAS EXIST. VESSELS ARE REMINDED TO PROCEED AT A SAFE SPEED AND MAINTAIN A PROPER LOOK-OUT, PARTICULARLY FOR TUGS AND BARGES NAVIGATING NEAR THE PROJECT AREAS AND PASSENGER FERRIES CROSSING BETWEEN CHANGI AND PULAU TEKONG AND VICINITY OF PASIR GUDANG.

T895

VLCC YOUNG YONG CALLSIGN J2JZ WAS REPORTED GROUNDED AT APPROXIMATE POSITION LAT 01-07.785N LONG 103-42.838E. ALL VESSELS PASSING THE VICINITY ARE ADVISED TO NAVIGATE WITH CAUTION.

TT894

THERE IS A REPORT OF UNAUTHORISED BOARDING ON 24 OCT 2022 AT 0002LT IN POSITION LAT 01-09.88N LONG 103-26.03E. MARINERS ARE ADVISED TO KEEP A GOOD LOOK OUT AND MAINTAIN ANTI-PIRACY WATCH.

TT891

THERE IS A REPORT OF UNAUTHORISED BOARDING ON 17 OCT 2022 AT 0105LT IN POSITION LAT 01-09.65N LONG 103-26.5E. MARINERS ARE ADVISED TO KEEP A GOOD LOOK OUT AND MAINTAIN ANTI-PIRACY WATCH.

TT890

THERE IS A REPORT OF UNAUTHORISED BOARDING ON 16 OCT 2022 AT 2230LT IN POSITION LAT 01-09.3N LONG 103-27.4E. MARINERS ARE ADVISED TO KEEP A GOOD LOOK OUT AND MAINTAIN ANTI-PIRACY WATCH.

## IV

### REPRINT OF MARITIME SAFETY INFORMATION

The following Maritime Safety Information have been shortlisted, as they would be of particular interest to mariners.

TT765 (Amended 200930H)

CONDUCTING OF RECLAMATION WORKS BOUNDED BY THE FOLLOWING COORDINATES FROM 1 SEP 2021.

1. 01-19.63N 104-24.08E
2. 01-20.05N 104-24.08E
3. 01-20.28N 104-24.51E
4. 01-20.26N 104-24.59E
5. 01-20.18N 104-24.70E
6. 01-20.06N 104-24.78E
7. 01-19.88N 104-24.84E
8. 01-19.68N 104-24.83E
9. 01-19.63N 104-24.80E

VESSELS PASSING IN THE VICINITY ARE ADVISED TO GIVE A WIDE BERTH AND NAVIGATE WITH CAUTION

TT643

THERE IS REPORT OF CONCENTRATION OF FISHING VESSELS OBSERVED IN THE EASTBOUND TRAFFIC LANE IN THE VICINITY BETWEEN BUFFALO ROCK AND BATU BERHANT. ALL VESSELS ARE ADVISED TO PROCEED AT A SAFE SPEED, KEEP A SHARP LOOK OUT AND NAVIGATE WITH EXTREME CAUTION AT ALL TIME.

TT642

ALL MARINERS NAVIGATING THROUGH THE STRAIT OF SINGAPORE ARE REMINDED TO MAINTAIN CLOSE AND CONTINUOUS MONITORING OF VESSEL'S POSITION. IN DETERMINING RISK OF GROUNDING, DIFFERENT METHODS OF POSITION FIXING SHOULD ALSO BE USED AS MEANS OF CROSS-CHECKING.

TT426

ALL MARINERS ARE REMINDED TO NAVIGATE WITH CAUTION IN THE PRECAUTIONARY AREAS AND TSS, MAINTAIN A GOOD LOOKOUT FOR CROSSING TRAFFIC. VESSELS INTENDING TO CROSS THE TSS SHALL DO SO ONLY WHEN IT IS SAFE AND SHALL AT ALL TIMES COMPLY WITH THE COLREGS.

TT399

VESSELS ARRIVING TO SINGAPORE OR TRANSITING THROUGH THE STRAIT ARE RECOMMENDED TO UPDATE THEIR DESTINATION ACCURATELY IN THE AIS TO ENHANCE SITUATIONAL AWARENESS FOR OTHER TRAFFIC IN THE VICINITY. EG: SG-PEBGB FOR PILOT EASTERN BOARDING GROUND BRAVO.

TT363 (AMENDED ON 140821UTC APRIL 2019).

MARINERS ARE REMINDED NOT TO ANCHOR IN ALL AREAS IN THE TSS, INCLUDING PRECAUTIONARY AREAS OF THE STRAITS OF MALACCA AND SINGAPORE AS WELL AS BETWEEN THE LANDWARD LIMITS OF THE TSS AND APPROACHES TO THE PORTS. VESSELS ENTERING ANY PORT IN ANY LITTORAL STATES ARE TO ANCHOR IN THE ANCHORAGES DESIGNATED BY THE RESPECTIVE LITTORAL STATES. MARINERS ARE ALSO REMINDED THAT EVERY CARE SHOULD BE TAKEN TO AVOID ANCHORING IN THE VICINITY OF SUBMARINE CABLES OR PIPELINES.

SR123 (AMENDED ON 100800UTC JUNE 2020).

SEA ROBBERIES ARE REPORTED IN THE SINGAPORE STRAIT. MARINERS ARE TO MAINTAIN A CONSTANT VISUAL AND RADAR WATCH FOR SMALL CRAFT AND REPORT ANY SUSPICIOUS ACTIVITIES IN THE SINGAPORE STRAIT TO VTIS SINGAPORE.

---

ISSUED BY SINGAPORE PORT OPERATIONS CONTROL CENTRE (as at 28<sup>th</sup> October 2022)

**V**  
**EXTRACT OF ADMIRALTY NOTICES TO MARINERS**  
**FOR DUAL BADGED CHARTS**

These notices can also be accessed directly from UKHO Website:

<http://www.admiralty.co.uk/maritime-safety-information/admiralty-notices-to-mariners>

**3952 SINGAPORE - NM Block.**

Source: Maritime and Port Authority of Singapore

*Note:* Former Notice 4740(P)/21 is cancelled.

**Chart 4037** [ *previous update 628/22* ] WGS84 DATUM

Insert the accompanying block, centred on: 1° 16'·0N., 103° 51'·7E.

**3955\* SINGAPORE STRAIT - Buoy.**

Source: Maritime and Port Authority of Singapore

**Chart 3831** [ *previous update New Edition 28/04/2022* ] WGS84 DATUM

Insert  *Fl.Y.5s DHI-CESS-2* 1° 19'·16N., 104° 03'·13E.


**Chart 4041** [ *previous update 5200/21* ] WGS84 DATUM

Insert  *Fl.Y.5s DHI-CESS-2* 1° 19'·16N., 104° 03'·13E.

**Chart 4042** [ *previous update 2613/22* ] WGS84 DATUM

Insert  *Fl.Y.5s DHI-CESS-2* 1° 19'·16N., 104° 03'·13E.

**Chart 4043** [ *previous update 1801/22* ] WGS84 DATUM

Insert  *Fl.Y.5s DHI-CESS-2* 1° 19'·16N., 104° 03'·13E.

**Chart 4044** [ *previous update 3517/22* ] WGS84 DATUM

Insert  *Fl.Y.5s DHI-CESS-2* 1° 19'·16N., 104° 03'·13E.

**3973(T)/22 SINGAPORE - Dredging area. Works.**

Source: Maritime and Port Authority of Singapore

1. \*Dredging works are taking place in the Temasek Fairway, until 9 November 2022, within an area bounded by the following positions:

1° 13'·351N., 103° 40'·250E.  
 1° 15'·777N., 103° 39'·272E.  
 1° 15'·690N., 103° 39'·061E.  
 1° 13'·442N., 103° 39'·968E.  
 1° 13'·337N., 103° 40'·202E.

2. Mariners are advised to navigate with caution in the area and to refer to the latest Port Marine Notices available at the MPA website for the latest information.

3. Navigational warning broadcasts will be promulgated by Singapore VTIS on VHS Channel 22 and NAVTEX. Mariners are to maintain a listening watch.

4. \*Former Notice 5066(T)/21 is cancelled.

\*Indicates new or revised entry.  
 (WGS84 DATUM)

**Charts affected - 4030 - 4031 - 4032 - 4033 - 4038 - 4039 - 4040 - 8175 - 8176**

## V

## EXTRACT OF ADMIRALTY NOTICES TO MARINERS FOR DUAL BADGED CHARTS

These notices can also be accessed directly from UKHO Website:

<http://www.admiralty.co.uk/maritime-safety-information/admiralty-notices-to-mariners>

### 4059(P)/22 MALACCA STRAIT - Submarine cable.

Source: Marine Department, Malaysia Notice 132(T)/22 and Marine Department, Malaysia Notice 144(T)/22

1. The submarine cable, India-Asia-Xpress (IAX) is being laid along the Malacca Strait, joining the following positions:

1° 15'·62N., 103° 25'·13E.  
 1° 15'·62N., 103° 24'·68E.  
 1° 16'·29N., 103° 24'·01E.  
 1° 17'·91N., 103° 22'·45E.  
 1° 18'·66N., 103° 21'·88E.  
 1° 18'·99N., 103° 21'·45E.  
 1° 19'·95N., 103° 20'·50E.  
 1° 20'·47N., 103° 19'·92E.  
 1° 20'·87N., 103° 19'·65E.  
 1° 25'·17N., 103° 15'·41E.  
 1° 25'·58N., 103° 15'·10E.  
 1° 26'·90N., 103° 13'·85E.  
 1° 30'·85N., 103° 10'·31E.  
 1° 39'·30N., 102° 58'·29E.  
 1° 46'·65N., 102° 42'·04E.  
 1° 47'·28N., 102° 39'·74E.  
 1° 50'·42N., 102° 32'·96E.  
 1° 53'·43N., 102° 26'·17E.  
 1° 55'·92N., 102° 20'·42E.  
 1° 57'·65N., 102° 17'·51E.

and

\*2° 29'·79N., 101° 37'·38E.  
 \*2° 31'·13N., 101° 35'·69E.  
 \*2° 34'·93N., 101° 32'·66E.  
 \*2° 39'·63N., 101° 23'·32E.  
 \*2° 48'·87N., 101° 06'·47E.  
 \*3° 15'·41N., 100° 32'·63E.  
 \*3° 49'·73N., 99° 54'·69E.  
 \*3° 54'·06N., 99° 50'·51E.

2. Mariners are advised to navigate with caution in the area.  
 3. Former notice 3937(P)/22 is cancelled.

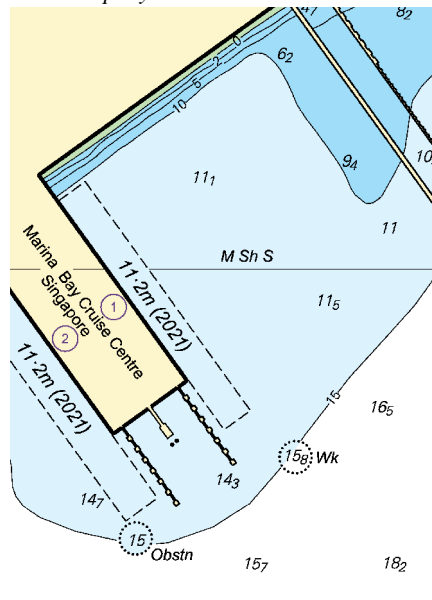
\* Indicates new or revised entry.  
 (WGS84 DATUM)

**Charts affected - 1140 - 2139 - 2158 - 2403 - 3833 - 3901 - 3902 - 3921 - 3940 - 3944 - 3945 - 3946 - 3947**

---

Updated to Admiralty Notices to Mariners no. 43 of 2022 dated 27<sup>th</sup> October 2022

To accompany Notice to Mariners 3952/22. Image Size (mm) 78.8 by 56.6



Block for Chart No 4037



## **HYDROGRAPHIC NOTE - Instructions**

1. Mariners are requested to notify the Chief Hydrographer, Maritime and Port Authority of Singapore, when new or suspected dangers to navigation are discovered, changes are observed in aids to navigation or where corrections to nautical publications may be necessary. Reports, which cannot be confirmed or are lacking in certain details, should not be withheld.
2. Any ambiguities of time, positioning and depth should be stressed and any firm expectation of being able to check the information provided on a following voyage should be mentioned.
3. Mariners using satellite position fixing systems, eg. GPS, should provide details of equipment and datum used (where applicable). Where bearings (true or magnetic) are taken visually or by radar to fix a position, it should include more than two objects in order to provide a check on its accuracy. A position may also be defined by bearing and distance from a conspicuous object eg. beacon, lighthouse etc.
4. The note should include a tracing or a digital image of the chart used and the details should be clearly marked.
5. Echo sounders frequently register greater depths than the advertised maximum depth for the equipment, eg. a trace appearing at 50 metres may be in fact be 550 metres or even 1050 metres for equipment whose maximum depth is 500 metres. Erroneous depths caused by 2nd transmission error can usually be recognised by the following:
  - (a) the tracing being weaker than normal for the depth registered,
  - (b) the trace appearing to pass through the transmission line,
  - (c) the feathery nature of the trace.
6. Upon receipt of a hydrographic note, a Notice to Mariners may be issued. The sender's vessel or name is quoted as the source unless the same information is also received in foreign Notices to Mariners.
7. Reports of shoals, uncharted dangers and defects in aids to navigation may also be made to the appropriate Singapore Port Operations Control Centre on VHF Channels 10, 12, 14, 68 or 73.

## HYDROGRAPHIC NOTE

To:

Chief Hydrographer  
Maritime and Port Authority of Singapore  
7B Keppel Road #20-00 Tanjong Pagar Complex  
Singapore 089055

Tel : 1800 272 7777 / (65) 6272 7777  
Email : [hydrographic@mpa.gov.sg](mailto:hydrographic@mpa.gov.sg)

### **Sender's Contact Details** :

Date : .....

Name of Vessel : .....

Address of Sender : .....

Tel : .....

Email : .....

### **Nature of Observation** :

General Location : .....

Subject : .....

Position : Lat. .... Long. ....

Charts Used : .....

Date & Time of Observation : .....

Details :  
.....  
.....  
.....

Attachment : .....

### **Equipment Used** :

Type of Position Fixing : GPS / DGPS Others : .....

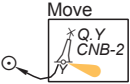
Type of Echo Sounder : .....

Name and Signature : .....

Ship's/Company's Stamp : .....

1° 20'N

104° 00'E



CORRECTION NO.	SNM EDN NO.	LAST CORR N NO.	CHART NO.	Location on Chart		
					X	
52	11/2022	47/2022	502			

Caution : some computer printers might distort the tracings.  
Users are advised to check and, if necessary, adjust settings on the printer



Caution : some computer printers might distort the tracings.  
Users are advised to check and, if necessary, adjust settings on the printer