



## SINGAPOREAN NOTICES TO MARINERS

SECTION	CONTENT	Page
I	Affected Charts & Publications	1
II	New Charts and Publications	2
	Notices to Mariners and Chart Corrections	5
	Temporary and Preliminary Notices	7
	Cancelled Temporary and Preliminary Notices	8
III	Navigational Information	9
	Amendments to Publications	10
IV	Reprint of Maritime Safety Information	13
V	Extract of Admiralty Notices to Mariners for Dual-Badged Charts	15

The monthly Notices to Mariners contain information required to keep charts and publications published by the Hydrographic Division, Maritime and Port Authority of Singapore up-to-date.

Mariners are requested to notify the Chief Hydrographer, Maritime and Port Authority of Singapore, immediately of the discovery of new or suspected dangers to navigation, observed changes to aids to navigation and ways Singaporean Charts and Publications can be improved. The Hydrographic Note on the back page should be used for this purpose.

Detailed information of charts and publications (coverage of charts, latest editions and distributors) are available on the Maritime and Port Authority of Singapore's Website: [www.mpa.gov.sg](http://www.mpa.gov.sg)

**MPA Telegram Channel:** MPA has launched a Telegram channel for notices and circulars. To stay updated, please subscribe via the following link <https://go.gov.sg/mpa-telegram> or scan the QR code:



<https://go.gov.sg/mpa-telegram>

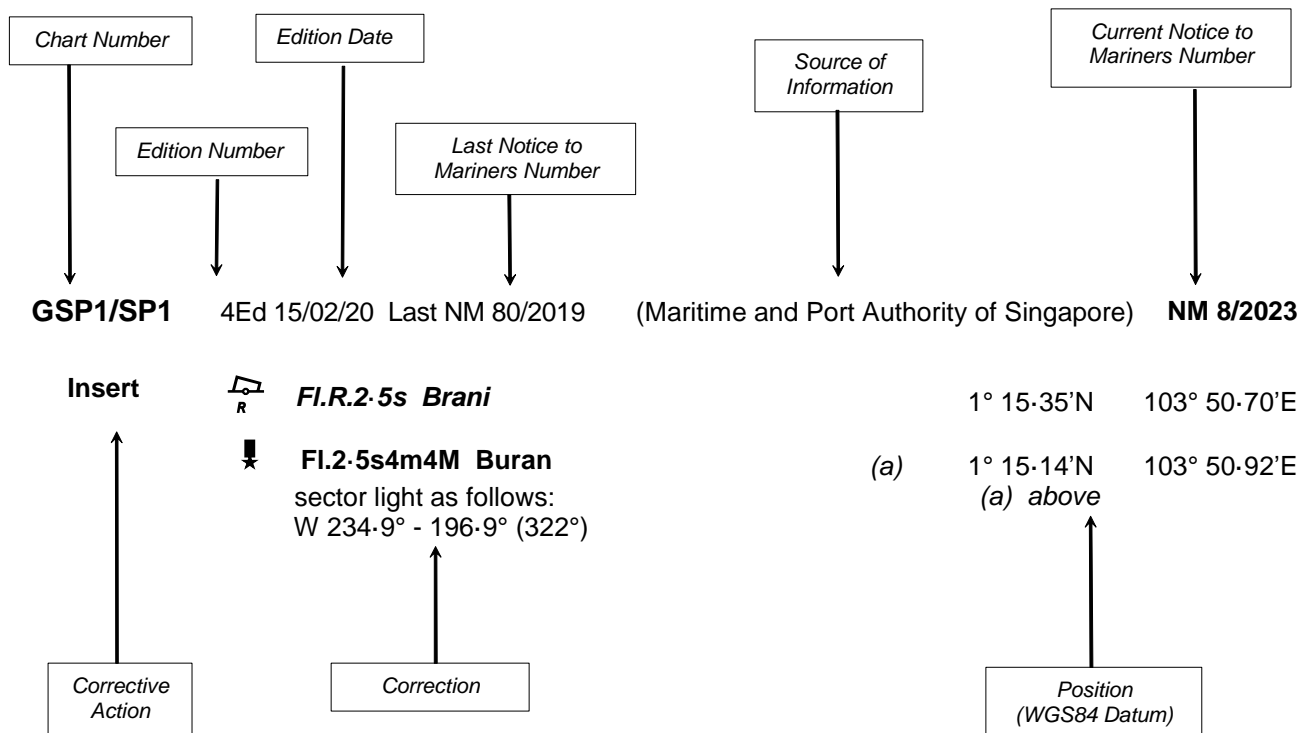
- [Singaporean Notice to Mariners](#)
- [Singaporean Charts](#)
- [Dual-Badged Charts](#)
- [Singapore ENC](#)
- [Malacca and Singapore Straits ENC](#)
- [Singapore Port Information](#)
- [Singapore Tide Tables](#)

### Contact information:

Hydrographic Division  
Maritime and Port Authority of Singapore  
7B Keppel Road  
#20-00 Tanjong Pagar Complex  
Singapore 089055  
Tel : 1800 272 7777 / (65) 6272 7777  
Email : [hydrographic@mpa.gov.sg](mailto:hydrographic@mpa.gov.sg)

## EXPLANATION OF FORMAT

The elements of a typical chart correction are explained below.



### Notes:

- a) Notice to Mariners number followed by:
  - T** indicates a Temporary Notice (eg. **NM 9T/2023**).
  - P** indicates a Preliminary Notice (eg. **NM 10P/2023**).
- b) Bearings are true reckoned clockwise from 000° to 359°; those relating to lights are from seaward.
- c) Heights and elevations are above Mean High Water Springs.
- d) # indicates where amendments are made.
- e) \* indicates source from Maritime and Port Authority of Singapore.

I  
**AFFECTED CHARTS AND PUBLICATIONS**

**INDEX OF NOTICES**

<b>NOTICE NO.</b>	<b>DESCRIPTION</b>	<b>PAGE NO.</b>
-	New Charts and Publications	2 - 4
63 & *65	Singaporean Chart 202	5
64	Singaporean Chart 501	5
*65	Singaporean Chart 503	6
*66	Singapore Port Marine Notices/Circulars	9
*67	Amendments to Publications	10 - 12
-	Reprint of Maritime Safety Information	13 - 14
-	Extract of Admiralty Notices to Mariners for Dual-Badged Charts	15 - 16

\*Source: Maritime and Port Authority of Singapore

## II NEW CHARTS AND PUBLICATIONS

### NEW EDITION DUAL-BADGED CHARTS TO BE PUBLISHED ON 30<sup>TH</sup> NOVEMBER 2023

<b>Chart Number</b>	: 4035
<b>Title</b>	: Port of Singapore Western Anchorages, Jong Fairway and Cruise Bay
<b>Coverage</b>	: Lat        01° 10-90'N        01° 16-90'N Long        103° 45-50'E        103° 49-54'E
<b>Scale</b>	: 1 : 10 000
<b>Date to be Published</b>	: 30 <sup>th</sup> November 2023
<b>Size of Chart</b>	: 749.4 x 1105.7 mm
<b>Description</b>	: This new edition includes updated surveys, changes to topography, aids to navigation, and submarine cables.
	The existing chart of the same number published on 22 <sup>nd</sup> October 2020 will be superseded.

\*Note: Publication date has been changed to 30<sup>th</sup> November 2023

---

<b>Chart Number</b>	: 4036
<b>Title</b>	: Port of Singapore Raffles Lighthouse to The Sisters
<b>Coverage</b>	: Lat        01° 09-40'N        01° 13-47'N Long        103° 44-20'E        103° 50-13'E
<b>Scale</b>	: 1 : 10 000
<b>Date to be Published</b>	: 30 <sup>th</sup> November 2023
<b>Size of Chart</b>	: 1100.2 x 750.1 mm
<b>Description</b>	: This new edition includes updated surveys, changes to topography, aids to navigation, and submarine cables.
	The existing chart of the same number published on 22 <sup>nd</sup> October 2020 will be superseded.

\*Note: Publication date has been changed to 30<sup>th</sup> November 2023

---

<b>Chart Number</b>	: 4037
<b>Title</b>	: Port of Singapore Keppel Harbour, Tanjong Pagar Terminal
<b>Coverage</b>	: Lat        01° 12-52'N        01° 16-59'N Long        103° 49-40'E        103° 55-34'E
<b>Scale</b>	: 1 : 10 000
<b>Date to be Published</b>	: 30 <sup>th</sup> November 2023
<b>Size of Chart</b>	: 1101.8 x 750.1 mm
<b>Description</b>	: This new edition includes updated surveys, changes to topography, aids to navigation, and submarine cables.
	The existing chart of the same number published on 22 <sup>nd</sup> October 2020 will be superseded.

\*Note: Publication date has been changed to 30<sup>th</sup> November 2023

---

## II NEW CHARTS AND PUBLICATIONS

### NEW EDITION SINGAPORE ENC TO BE RELEASED ON 30<sup>TH</sup> NOVEMBER 2023

**ENC Name** : SG5C4035

**Location** : Western Anchorages, Jong Fairway and Cruise Bay

**Coverage** : Lat 01° 10-90'N 01° 16-90'N  
Long 103° 45-58'E 103° 49-42'E

**Compilation Scale** : 1 : 8 000

**Date to be Released** : 30<sup>th</sup> November 2023

**Description** : This new edition includes updated surveys, changes to topography, aids to navigation, and submarine cables.

The existing cell of the same number published on 22<sup>nd</sup> October 2020 will be superseded.

\*Note: Publication date has been changed to 30<sup>th</sup> November 2023

**ENC Name** : SG5C4036

**Location** : Raffles Lighthouse to The Sisters

**Coverage** : Lat 01° 09-40'N 01° 12-52'N  
Long 103° 44-20'E 103° 50-13'E

**Compilation Scale** : 1 : 8 000

**Date to be Released** : 30<sup>th</sup> November 2023

**Description** : This new edition includes updated surveys, changes to topography, aids to navigation, and submarine cables.

The existing cell of the same number published on 22<sup>nd</sup> October 2020 will be superseded.

\*Note: Publication date has been changed to 30<sup>th</sup> November 2023

**ENC Name** : SG5C4037

**Location** : Keppel Harbour, Tanjong Pagar Terminal And Approaches

**Coverage** : Lat 01° 12-52'N 01° 16-59'N  
Long 103° 49-42'E 103° 55-34'E

**Compilation Scale** : 1 : 8 000

**Date to be Released** : 30<sup>th</sup> November 2023

**Description** : This new edition includes updated surveys, changes to topography, aids to navigation, and submarine cables.

The existing cell of the same number published on 22<sup>nd</sup> October 2020 will be superseded.

\*Note: Publication date has been changed to 30<sup>th</sup> November 2023

## II NEW CHARTS AND PUBLICATIONS

### SINGAPOREAN CHARTS FOR SMALL CRAFT TO BE WITHDRAWN WITH EFFECT FROM 1<sup>ST</sup> JAN 2024.

**Chart** : CHARTS FOR SMALL CRAFT

**Chart Title** : Singapore Port Waters and Approaches - 2022/2023 Edition

**Date to be withdrawn** : 1<sup>st</sup> January 2024

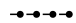
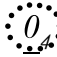

**Description** : The existing Charts For Small Craft, 2022/2023 Edition published on 15<sup>th</sup> May 2022 will be discontinued from 1<sup>st</sup> January 2024.  
Singaporean nautical charts and large-scale nautical charts continue to be available at our distributors.

- [Singaporean Charts](#)
- [Dual-Badged Charts](#)
- [Singapore ENC](#)

---

## II

## NOTICES TO MARINERS AND CHART CORRECTIONS



<b>202</b>	8 Ed 15/09/16 Last NM 62/2023 (Pushidrosal Indonesian Notice No. 37/404/2023)	<b>NM 63/2023</b>
<b>Insert</b>	submarine pipeline,  , joining:	1°06·16'N 103°48·03'E
		1°06·95'N 103°51·13'E
		1°06·86'N 103°52·03'E
		1°06·16'N 103°53·49'E
		1°05·78'N 103°54·10'E
	(Maritime and Port Authority of Singapore)	<b>*NM 65/2023</b>
<b>Delete</b>	limit of working area, pecked line, joining:	1°19·63'N 104°24·08'E
		1°20·05'N 104°24·08'E
		1°20·28'N 104°24·51'E
		1°20·26'N 104°24·59'E
		1°20·18'N 104°24·70'E
		1°20·06'N 104°24·78'E
		1°19·88'N 104°24·84'E
		1°19·68'N 104°24·83'E
		1°19·63'N 104°24·80'E
	legend, <i>Works in progress (2021)</i> (see Note), centred on:	1°19·42'N 104°26·01'E
	the accompanying note, WORKS IN PROGRESS, centred on:	1°38·63'N 104°08·26'E
<b>Replace</b>	 Wk with 	1°19·80'N 104°24·57'E
<hr/>		
<b>501</b>	7 Ed 01/09/15 Last NM 41/2023 (Pushidrosal Indonesian Notice No. 37/404/2023)	<b>NM 64/2023</b>
	(Pushidrosal Indonesian Notice No. 37/405/2023)	
	(Pushidrosal Indonesian Notice No. 41/456/2023)	
<b>Insert</b>	the accompanying block, centred on:	1°06·39'N 103°50·96'E

---

\*Source: Maritime and Port Authority of Singapore

## II

## NOTICES TO MARINERS AND CHART CORRECTIONS

<b>503</b>	5 Ed 15/08/14 Last NM 50/2023	(Maritime and Port Authority of Singapore)	<b>*NM 65/2023</b>
<b>Delete</b>	limit of working area, pecked line, joining:	1°19·63'N	104°24·08'E
		1°20·05'N	104°24·08'E
		1°20·28'N	104°24·51'E
		1°20·26'N	104°24·59'E
		1°20·18'N	104°24·70'E
		1°20·06'N	104°24·78'E
		1°19·88'N	104°24·84'E
		1°19·68'N	104°24·83'E
		1°19·63'N	104°24·80'E
	legend, <i>Works in progress (2021)</i> (see Note), centred on:	1°19·80'N	104°24·87'E
	the accompanying note, WORKS IN PROGRESS, centred on:	1°02·51'N	104°33·54'E
<b>Replace</b>	 Wk with 	1°19·80'N	104°24·57'E

---

\*Source: Maritime and Port Authority of Singapore



**II**  
**TEMPORARY AND PRELIMINARY NOTICES**

**NIL**

**II**  
**TEMPORARY AND PRELIMINARY NOTICES**

**Cancelled Temporary and Preliminary Notices**

<i>No. of Notices</i>	<i>Subject</i>	<i>Charts Affected</i>
91P/2021	Reclamation works in the vicinity of Horsburgh Lighthouse	Singaporean 202, 503, MS3IK2EB, MS4NS2EB

### III NAVIGATIONAL INFORMATION

#### \*(NM 66/2023) SINGAPORE PORT MARINE NOTICES / CIRCULARS

The Port Marine Notices/Circulars shortlisted below would be of particular interest to Mariners. Details and complete list of Port Marine Notices/Circulars are available at this link:

<http://www.mpa.gov.sg/web/portal/home/port-of-singapore/circulars-and-notices>

#### **PMC No. Subject**

10/2023	digitalPORT@SGTM - Implementation of just in time planning and coordination platform for Port of Singapore
---------	--

---

#### **PMN No. Subject**

83/2023	Supply and delivery of sand at Changi East deposition area
84/2023	Reclamation and marine works at west of Tuas View
87/2023	Reclamation work at Pulau Tekong
88/2023	Mooring and unmooring of vessels off Pulau Tekong
92/2023	Construction of marine viaduct off Woodlands jetty
93/2023	Repair works at Bedok jetty
100/2023	Dredging work in Temasek Fairway

---

\*Source: Maritime and Port Authority of Singapore

### III AMENDMENTS TO PUBLICATIONS

\*(NM 67/2023) UPDATING OF PUBLICATION “SINGAPORE PORT INFORMATION 2022/2023”

#### PILOTAGE

##### 1. Page 74

**Amend** the following:

#### ACCESS TO VESSELS

- 23 Shipmasters are reminded that Government Officers and pilots may, on grounds of personal safety, refuse to board unless a safe and satisfactory means of access to the vessel is provided. The safety requirements in respect of pilot ladders, must be in accordance with **Regulation 23** of Chapter V of the Merchant Shipping (Safety Convention) Regulations (Cap 179, Rg11).

#### WHARVES AND BERTHS

##### 1a TUAS F2 TERMINAL (1°15·2'N, 103°37·5'E)

##### 2. Page 162

**Insert** the following:

Berth	Length of Berth Box	Max LOA	Depth Alongside (Year Surveyed)
T213	400m	-	23·0m (2020)
T214	400m	-	23·0m (2020)

#### CHARACTERISTICS OF AIDS TO NAVIGATION

##### APPROACHES TO KUALA JOHOR

##### 3. Page 156

**Amend** the following:

Name Of Beacon / Buoy	Position Lat. N Long. E Deg Min	Structure, Colour & Shape	Light Characteristic	Owner
NP-1 Buoy	01°24·700' 104°00·000'	Red can	Fl.R.4s	NParks

### III AMENDMENTS TO PUBLICATIONS

\*(NM 67/2023) UPDATING OF PUBLICATION “SINGAPORE PORT INFORMATION 2022/2023”

#### CHARACTERISTICS OF AIDS TO NAVIGATION

#### PULAU TEKONG

#### 4. Page 157

Amend the following:

Name Of Beacon / Buoy	Position Lat. N Long. E Deg Min	Structure, Colour & Shape	Light Characteristic	Owner
Calder Buoy	01°23·038' 104°05·158'	Red can	Fl.R.8s	TOA Corporation
Malang Tiga Buoy	01°23·041' 104°01·414'	Green Conical	Fl.G.2,5s	TOA Corporation
Nelayan Buoy	01°21·851' 104°02·817'	Green Conical	Fl.G.4s	TOA Corporation
North Tekong Buoy	01°26·020' 104°01·033'	Double black cones top-mark pointing upward on black yellow pillar	Q.W	TOA Corporation
Red Calder Buoy	01°21·754' 104°04·681'	Red can	Fl.R.4s	TOA Corporation
Tekong Buoy	01°25·409' 104°00·441'	Green Conical	Fl(3)G.15s	TOA Corporation

### III AMENDMENTS TO PUBLICATIONS

\*(NM 67/2023) UPDATING OF PUBLICATION “SINGAPORE PORT INFORMATION 2022/2023”

#### CHARACTERISTICS OF AIDS TO NAVIGATION

#### PULAU TEKONG (Cont/)

#### 5. Page 158

Amend the following:

Name Of Beacon / Buoy	Position Lat. N Long. E Deg Min	Structure, Colour & Shape	Light Characteristic	Owner
Tekong 1 Buoy	01°22·589' 104°01·947'	Green Conical	Fl.G.4s	TOA Corporation
Tekong 3 Buoy	01°23·351' 104°01·054'	Green Conical	Fl.G.2s	TOA Corporation
Tekong 5 Buoy	01°24·216' 104°00·760'	Green Conical	Fl.G.4s	TOA Corporation
Tekong 6 Buoy	01°24·583' 104°00·635'	Green Conical	Fl(2)G.10s	TOA Corporation
Tekong 9 Buoy	01°21·067' 104°03·744'	Green Conical	Fl.G.4s	TOA Corporation
Tekong 10 Buoy	01°21·072' 104°04·781'	Red can	Fl.R.2s	TOA Corporation
Tekong 11 Buoy	01°22·257' 104°04·879'	Red can	Fl.R.6s	TOA Corporation
Tekong 18 Buoy	01°26·270' 104°01·347'	Yellow Pillar	Fl.Y.4s	TOA Corporation
Tekong 19 Buoy	01°26·541' 104°02·352'	Double black cones top-mark pointing upward on black yellow pillar	Q.W	TOA Corporation
Tekong 20 Buoy	01°26·257' 104°03·480'	Yellow Pillar	Fl.Y.2s	TOA Corporation
Tekong 21 Buoy	01°20·604' 104°04·302'	Green Conical	Fl.G.2s	TOA Corporation
Tekong 22 Buoy	01°23·658' 104°05·396'	Red can	Fl.R.10s	TOA Corporation
Tekong 23 Buoy	01°24·374' 104°05·375'	Red can	Fl.R.2s	TOA Corporation
West Tekong Buoy	01°25·166' 104°00·431'	Double black cones point to point on yellow with black horizontal band pillar	Q(9)W.15s	TOA Corporation

\*Source: Maritime and Port Authority of Singapore

## IV

## REPRINT OF MARITIME SAFETY INFORMATION

TT418

WEST BOUND DEEP DRAFT VESSELS AND VLCCS ARE REMINDED TO COMPLY WITH THE RULES OF VESSELS NAVIGATING THROUGH THE STRAITS OF MALACCA AND SINGAPORE (SOMS). THEY SHALL ALLOW FOR AN UKC OF AT LEAST 3.5 METRES AT ALL TIMES DURING THE ENTIRE PASSAGE THROUGH THE SOMS AND AS FAR AS IT IS SAFE AND PRACTICABLE, PROCEED AT A SPEED OF NOT MORE THAN 12 KTS OVER THE GROUND IN THE WESTBOUND LANE OF THE SINGAPORE STRAIT (BETWEEN SOUTH OF ST JOHN'S ISLAND & RAFFLES LIGHTHOUSE). THEY ARE ADVISED TO BROADCAST, 8 HOURS BEFORE ENTERING THE TSS, NAVIGATIONAL INFORMATION GIVING NAME, DEADWEIGHT, DRAUGHT, SPEED AND TIMES OF PASSING HORSBURGH LIGHTHOUSE AND RAFFLES LIGHTHOUSE.

TT961

VESSELS INTENDING TO CROSS THE TRAFFIC SEPARATION SCHEME (TSS) OR PRECAUTIONARY AREAS IN THE SINGAPORE STRAIT DURING THE HOURS OF DARKNESS ARE RECOMMENDED TO DISPLAY THE NIGHT SIGNALS CONSISTING OF 3 ALL ROUND GREEN LIGHTS IN A VERTICAL LINE AS DETAILED IN THE MARITIME AND PORT AUTHORITY OF SINGAPORE'S PORT MARINE CIRCULAR, 04 OF 2013 DATED 7 MAY 2013.

TT273

ALL VESSELS ARE ADVISED TO NAVIGATE WITH CAUTION, COMPLY WITH THE COLREGS, MAINTAIN VHF RADIO WATCH AND LISTEN TO TRAFFIC INFORMATION WHEN NAVIGATING IN THE SINGAPORE STRAIT AND PORT WATERS. MARINERS ARE ALSO ADVISED TO KEEP A GOOD LOOKOUT OF FREQUENT FERRIES CROSSING THE SINGAPORE STRAIT.

TT175

VESSELS IN EAST JOHOR STRAIT ARE ADVISED TO NAVIGATE WITH PARTICULAR ALERTNESS AND CAUTION WHEN NEAR THE PROJECT AREAS OFF PULAU TEKONG, CHANGI AND MALANG PAPAN AS SHALLOW WATER AREAS EXIST. VESSELS ARE REMINDED TO PROCEED AT A SAFE SPEED AND MAINTAIN A PROPER LOOK-OUT, PARTICULARLY FOR TUGS AND BARGES NAVIGATING NEAR THE PROJECT AREAS AND PASSENGER FERRIES CROSSING BETWEEN CHANGI AND PULAU TEKONG AND VICINITY OF PASIR GUDANG.

TT015

THERE IS A REPORT OF UNAUTHORISED BOARDING ON 27 OCT 23 AT 0430H IN POSITION Lat 01-24.20N Long 103-09.33E . MARINERS ARE ADVISED TO KEEP A GOOD LOOK OUT AND MAINTAIN ANTI-PIRACY WATCH.

TT014

THERE IS A REPORT OF UNAUTHORISED BOARDING ON 24 OCT 23 AT 0113H IN POSITION Lat 01-09.47N Long 103-27.45E .MARINERS ARE ADVISED TO KEEP A GOOD LOOK OUT AND MAINTAIN ANTI-PIRACY WATCH.

TT013

THERE IS A REPORT OF UNAUTHORISED BOARDING ON 23 OCT 23 AT 0100H IN POSITION Lat 01-04.00N Long 103-36.03E . MARINERS ARE ADVISED TO KEEP A GOOD LOOK OUT AND MAINTAIN ANTI-PIRACY WATCH.

TT010

RACON DELTA (SOUTH CARDINAL BUOY) QFL(6) 15S IN POSITION AT LAT 01-03.607N LONG 103-38.959E IS REPORTED NOT TRANSMITTING SIGNAL. ALL VESSELS PASSING THE VICINITY ARE ADVISED TO NAVIGATE WITH EXTRA CAUTION.

TT007 (AMENDED 091243H OCT 23)

REPORTS OF VISIBILITY IN THE SINGAPORE STRAIT AND SINGAPORE PORT WATERS ARE REDUCED BY HAZE. ALL VESSELS ARE ADVISED TO KEEP A PROPER LOOKOUT AND NAVIGATE WITH EXTRA CAUTION.

TT926 (AMENDED ON 03 FEB 2023 0932LT)

A WOODEN CRAFT HAS SUNK IN POSITION LAT 01-20.32N LONG 104-03.117E. ALL VESSELS ARE ADVISED TO KEEP WELL CLEAR OF THE NAVIGATIONAL HAZARD.

#### IV

### REPRINT OF MARITIME SAFETY INFORMATION

TT643

THERE IS REPORT OF CONCENTRATION OF FISHING VESSELS OBSERVED IN THE EASTBOUND TRAFFIC LANE IN THE VICINITY BETWEEN BUFFALO ROCK AND BATU BERHANTI. ALL VESSELS ARE ADVISED TO PROCEED AT A SAFE SPEED, KEEP A SHARP LOOK OUT AND NAVIGATE WITH EXTREME CAUTION AT ALL TIME.

TT642

ALL MARINERS NAVIGATING THROUGH THE STRAIT OF SINGAPORE ARE REMINDED TO MAINTAIN CLOSE AND CONTINUOUS MONITORING OF VESSEL-S POSITION. IN DETERMINING RISK OF GROUNDING, DIFFERENT METHODS OF POSITION FIXING SHOULD ALSO BE USED AS MEANS OF CROSS-CHECKING.

TT426

ALL MARINERS ARE REMINDED TO NAVIGATE WITH CAUTION IN THE PRECAUTIONARY AREAS AND TSS, MAINTAIN A GOOD LOOKOUT FOR CROSSING TRAFFIC. VESSELS INTENDING TO CROSS THE TSS SHALL DO SO ONLY WHEN IT IS SAFE AND SHALL AT ALL TIMES COMPLY WITH THE COLREGS.

TT399

VESSELS ARRIVING TO SINGAPORE OR TRANSITING THROUGH THE STRAIT ARE RECOMMENDED TO UPDATE THEIR DESTINATION ACCURATELY IN THE AIS TO ENHANCE SITUATIONAL AWARENESS FOR OTHER TRAFFIC IN THE VICINITY. EG: SG-PEBGB FOR PILOT EASTERN BOARDING GROUND BRAVO.

TT363

MARINERS ARE REMINDED NOT TO ANCHOR IN ALL AREAS IN THE TSS, INCLUDING PRECAUTIONARY AREAS OF THE STRAITS OF MALACCA AND SINGAPORE AS WELL AS BETWEEN THE LANDWARD LIMITS OF THE TSS AND APPROACHES TO THE PORTS. VESSELS ENTERING ANY PORT IN ANY LITTORAL STATES ARE TO ANCHOR IN THE ANCHORAGES DESIGNATED BY THE RESPECTIVE LITTORAL STATES. MARINERS ARE ALSO REMINDED THAT EVERY CARE SHOULD BE TAKEN TO AVOID ANCHORING IN THE VICINITY OF SUBMARINE CABLES OR PIPELINES.

---

ISSUED BY SINGAPORE PORT OPERATIONS CONTROL CENTRE (as at 01<sup>st</sup> November 2023)



## V

# EXTRACT OF ADMIRALTY NOTICES TO MARINERS FOR DUAL BADGED CHARTS

These notices can also be accessed directly from UKHO Website:

<http://www.admiralty.co.uk/maritime-safety-information/admiralty-notices-to-mariners>

## 3753 JOHOR STRAIT - NM Block.

Source: Malaysian Notice 12/184/22


### Chart 4044 [ *previous update 1754/23* ] WGS84 DATUM

Insert the accompanying block, centred on: 1° 29'·0N., 103° 48'·6E.

## 3769\* SINGAPORE - Buoyage.

Source: Maritime and Port Authority of Singapore

### Chart 4038 [ *previous update 075/23* ] WGS84 DATUM

Move  Fl.Y.2s:

HD-TWC 4, from: 1° 18'·66N., 103° 36'·98E.

to: 1° 18'·56N., 103° 36'·97E.

 Fl.Y.2s:

HD-TWC 8, from: 1° 17'·56N., 103° 36'·58E.

to: 1° 17'·50N., 103° 36'·65E.

### Chart 4040 [ *previous update 3076/23* ] WGS84 DATUM

Move  Fl.Y.2s:

HD-TWC 4, from: 1° 18'·66N., 103° 36'·98E.

to: 1° 18'·56N., 103° 36'·97E.

 Fl.Y.2s:

HD-TWC 8, from: 1° 17'·56N., 103° 36'·58E.

to: 1° 17'·50N., 103° 36'·65E.

## V

## EXTRACT OF ADMIRALTY NOTICES TO MARINERS FOR DUAL BADGED CHARTS

These notices can also be accessed directly from UKHO Website:

<http://www.admiralty.co.uk/maritime-safety-information/admiralty-notices-to-mariners>

### 3728(P)/23 SINGAPORE - Submarine cable.

Source: Maritime and Port Authority of Singapore

1. Submarine cables have been laid joining the following positions:

1° 12'·971N., 103° 37'·124E.  
 1° 12'·516N., 103° 36'·982E.  
 1° 12'·408N., 103° 36'·925E.  
 1° 12'·287N., 103° 36'·832E.  
 1° 12'·178N., 103° 36'·700E.  
 1° 12'·09N., 103° 36'·59E.  
 1° 11'·83N., 103° 36'·18E.  
 1° 11'·72N., 103° 35'·92E.  
 1° 11'·71N., 103° 35'·34E.  
 1° 11'·69N., 103° 35'·24E.  
 1° 11'·67N., 103° 35'·21E.  
 1° 11'·11N., 103° 35'·08E.  
 1° 10'·80N., 103° 34'·88E.  
 1° 10'·12N., 103° 34'·43E.  
 1° 10'·04N., 103° 34'·13E.  
 1° 06'·41N., 103° 31'·59E.  
 1° 06'·19N., 103° 31'·24E.  
 1° 06'·18N., 103° 31'·20E.

2. Charts will be updated when full details are available.  
(WGS84 DATUM)

**Charts affected - 3833 - 3947 - 4030 - 4038 - 4039 - 4040**

### 3740(P)/23 SINGAPORE - Obstruction.

Source: Maritime and Port Authority of Singapore

1. An obstruction with a depth of 14·6m exists in position 1° 15'·052N., 103° 41'·470E.
2. Mariners are advised to navigate with caution in the area.  
(WGS84 DATUM)

**Charts affected - 4031 - 4032 - 4033 - 4040**

---

Updated to Admiralty Notices to Mariners no. 42 of 2023 dated 19<sup>th</sup> October 2023

## **HYDROGRAPHIC NOTE - Instructions**

1. Mariners are requested to notify the Chief Hydrographer, Maritime and Port Authority of Singapore, when new or suspected dangers to navigation are discovered, changes are observed in aids to navigation or where corrections to nautical publications may be necessary. Reports, which cannot be confirmed or are lacking in certain details, should not be withheld.
2. Any ambiguities of time, positioning and depth should be stressed and any firm expectation of being able to check the information provided on a following voyage should be mentioned.
3. Mariners using satellite position fixing systems, eg. GPS, should provide details of equipment and datum used (where applicable). Where bearings (true or magnetic) are taken visually or by radar to fix a position, it should include more than two objects in order to provide a check on its accuracy. A position may also be defined by bearing and distance from a conspicuous object eg. beacon, lighthouse etc.
4. The note should include a tracing or a digital image of the chart used and the details should be clearly marked.
5. Echo sounders frequently register greater depths than the advertised maximum depth for the equipment, eg. a trace appearing at 50 metres may in fact be 550 metres or even 1050 metres for equipment whose maximum depth is 500 metres. Erroneous depths caused by 2nd transmission error can usually be recognised by the following:
  - (a) the tracing being weaker than normal for the depth registered,
  - (b) the trace appearing to pass through the transmission line,
  - (c) the feathery nature of the trace.
6. Upon receipt of a hydrographic note, a Notice to Mariners may be issued. The sender's vessel or name is quoted as the source unless the same information is also received in foreign Notices to Mariners.
7. Reports of shoals, uncharted dangers and defects in aids to navigation may also be made to the appropriate Singapore Port Operations Control Centre on VHF Channels 10, 12, 14, 68 or 73.

## HYDROGRAPHIC NOTE

To:  
Chief Hydrographer  
Maritime and Port Authority of Singapore  
7B Keppel Road #20-00 Tanjong Pagar Complex  
Singapore 089055

Tel : 1800 272 7777 / (65) 6272 7777  
Email : [hydrographic@mpa.gov.sg](mailto:hydrographic@mpa.gov.sg)

### **Sender's Contact Details** :

Date : .....

Name of Vessel : .....

Address of Sender : .....

Tel : .....

Email : .....

### **Nature of Observation** :

General Location : .....

Subject : .....

Position : Lat. .... Long. ....

Charts Used : .....

Date & Time of Observation : .....

Details : .....

.....

.....

Attachment : .....

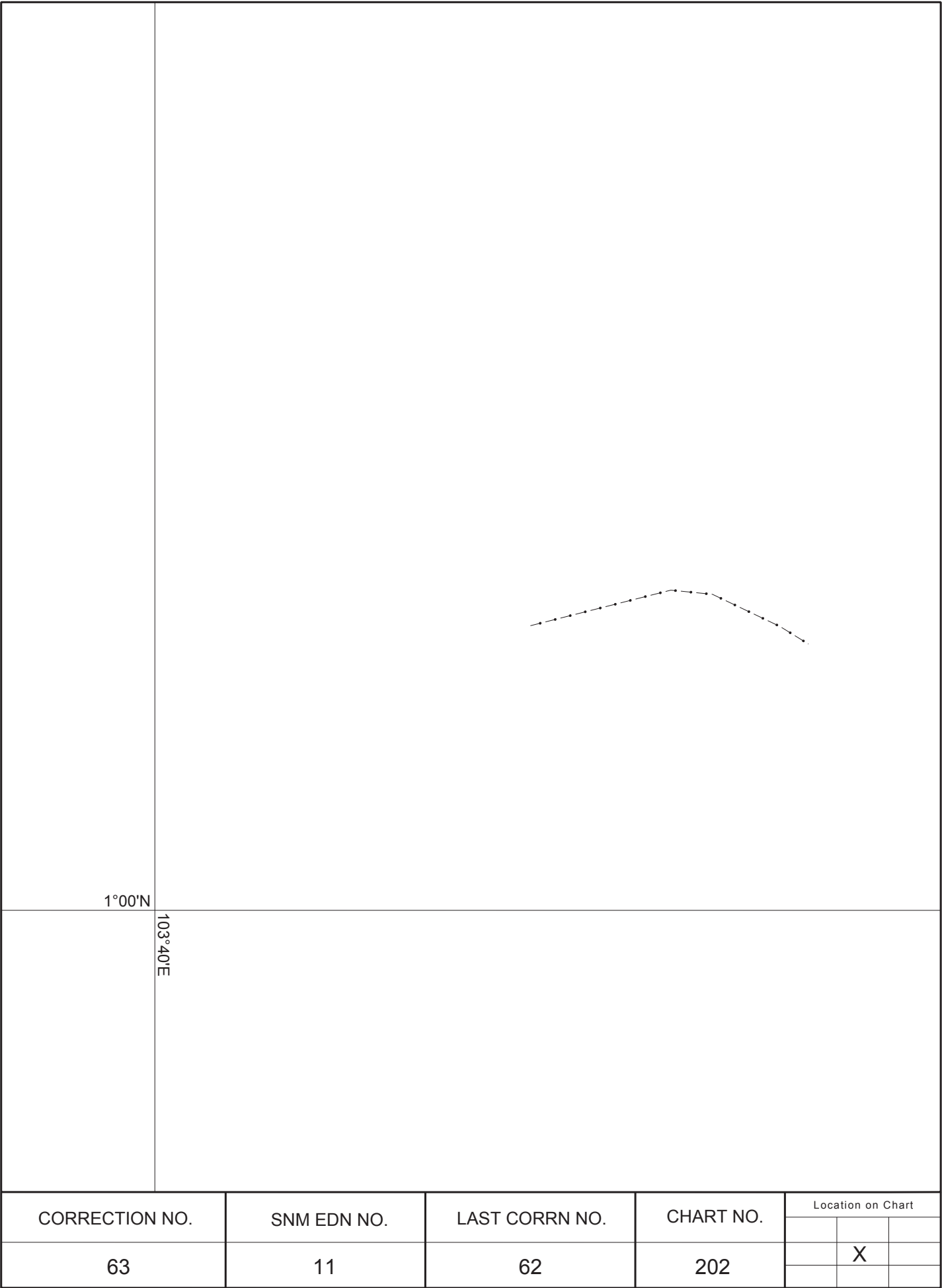
### **Equipment Used** :

Type of Position Fixing : GPS/DGPS Others : .....

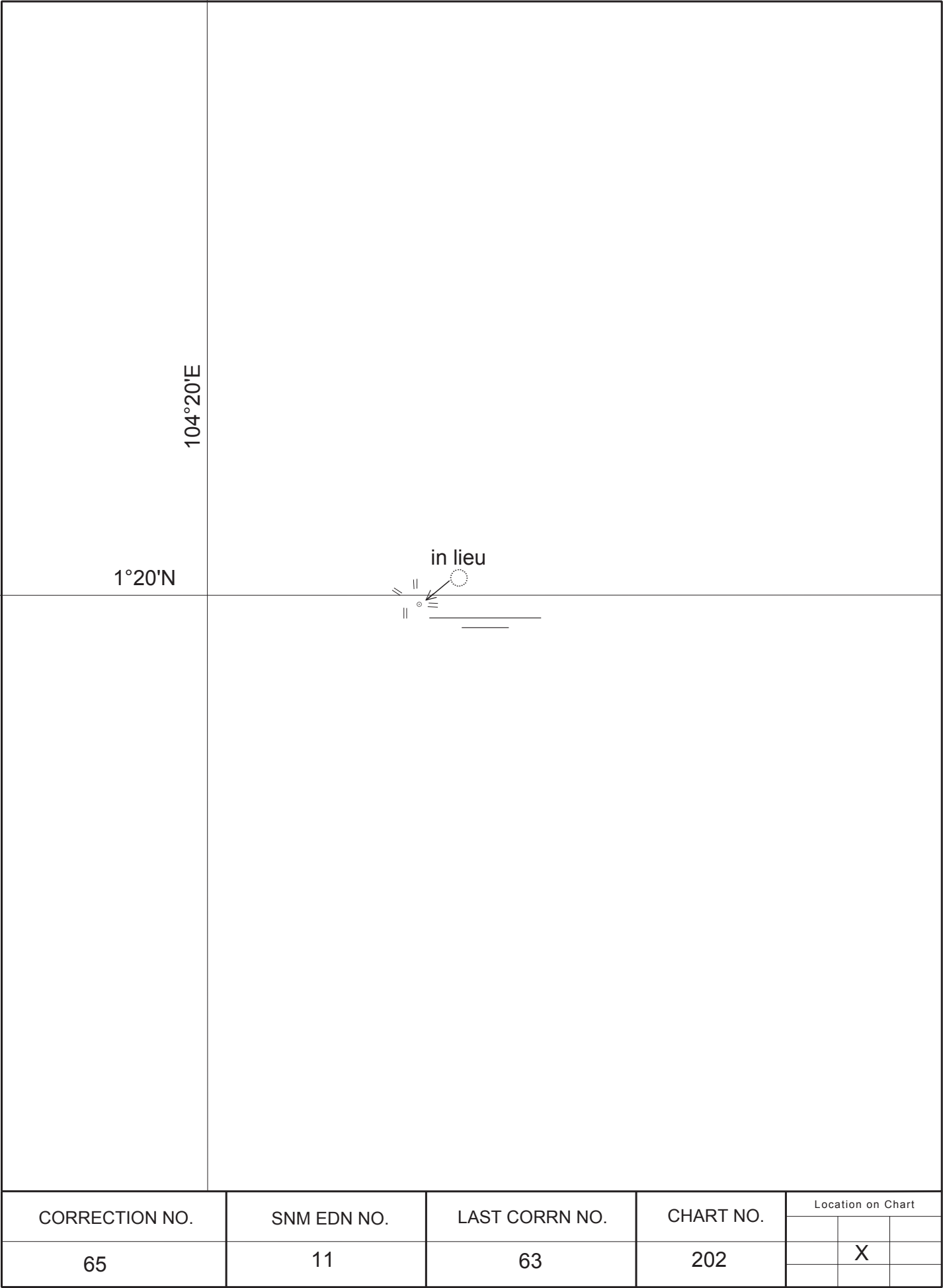
Type of Echo Sounder : .....

Name and Signature : .....

Ship's/Company's Stamp : .....

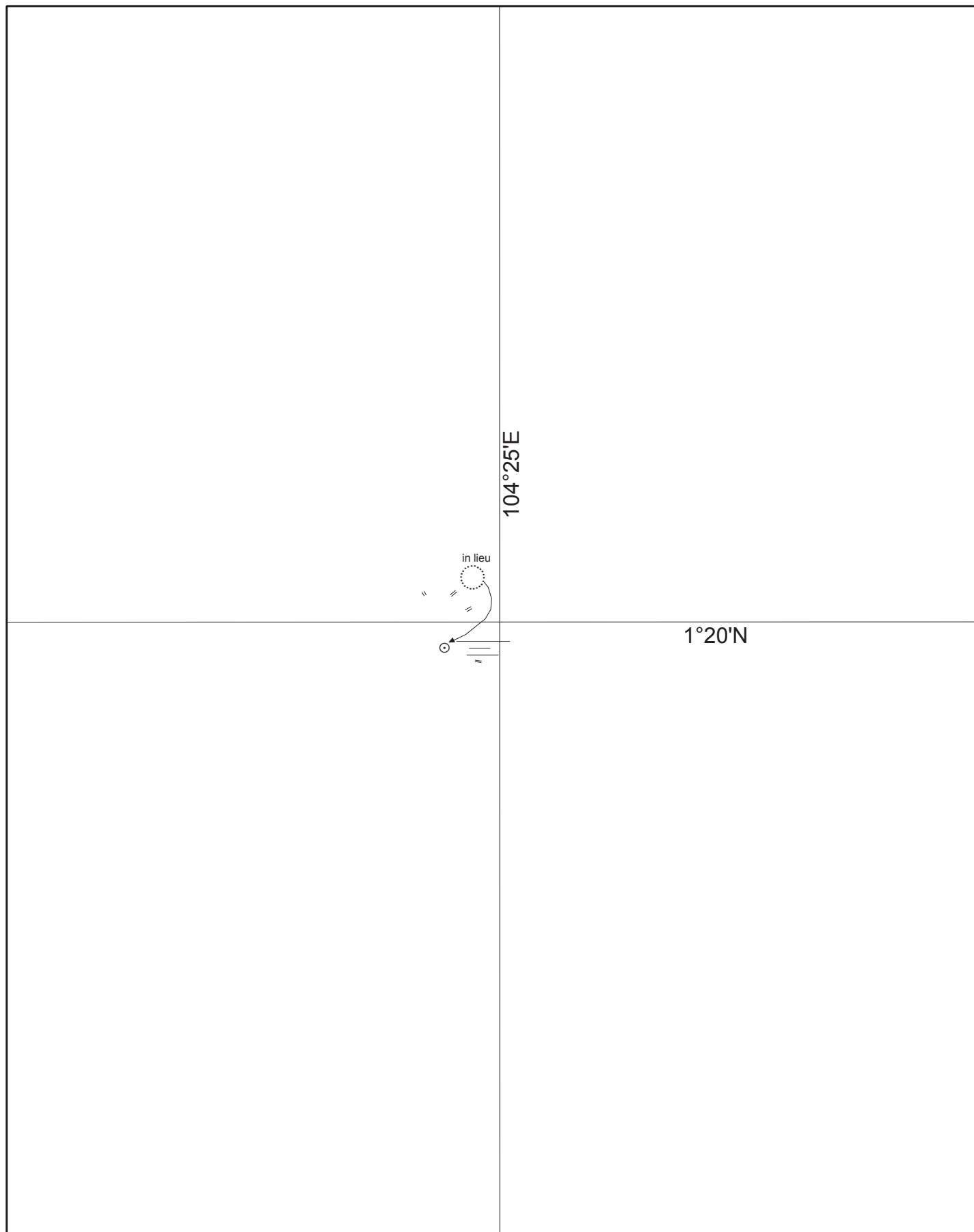


Caution : some computer printers might distort the tracings.  
Users are advised to check and, if necessary, adjust settings on the printer



CORRECTION NO.	SNM EDN NO.	LAST CORR N NO.	CHART NO.	Location on Chart		
					X	

Caution : some computer printers might distort the tracings.  
Users are advised to check and, if necessary, adjust settings on the printer

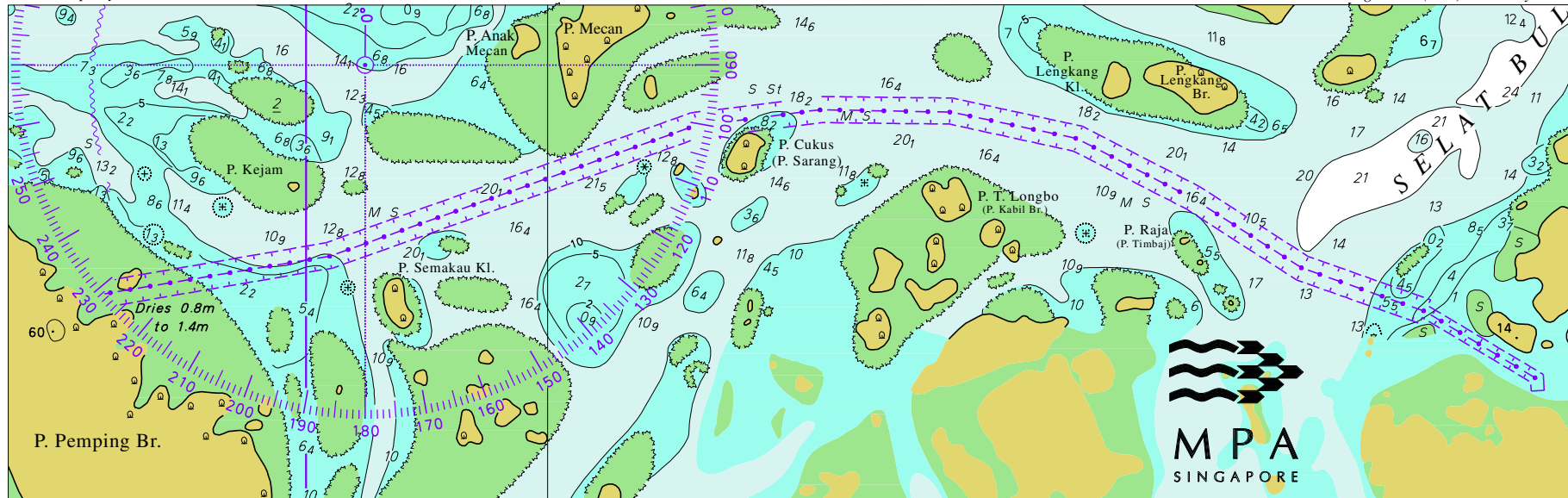


CORRECTION NO.	SNM EDN NO.	LAST CORR N NO.	CHART NO.	Location on Chart		
					X	
65	11	50	503			

Caution : some computer printers might distort the tracings.  
Users are advised to check and, if necessary, adjust settings on the printer

To accompany Notice to Mariners

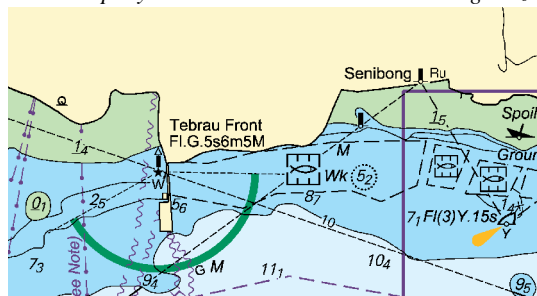
Image Size (mm) 239.6 by 76.1



Block for Chart No 501



To accompany Notice to Mariners 3753/23. Image Size (mm) 38.3 by 70.5



Block for Chart No 4044