



SINGAPOREAN NOTICES TO MARINERS

SECTION	CONTENT	Page
I	Affected Charts & Publications	1
II	New Charts and Publications	2
	Notices to Mariners and Chart Corrections	8
	Temporary and Preliminary Notices	9
	Cancelled Temporary and Preliminary Notices	10
III	Navigational Information	11
	Amendments to Publications	12
IV	Reprint of Maritime Safety Information	13
V	Extract of Admiralty Notices to Mariners for Dual-Badged Charts	15

The monthly Notices to Mariners contain information required to keep charts and publications published by the Hydrographic Division, Maritime and Port Authority of Singapore up-to-date.

Mariners are requested to notify the Chief Hydrographer, Maritime and Port Authority of Singapore, immediately of the discovery of new or suspected dangers to navigation, observed changes to aids to navigation and ways Singaporean Charts and Publications can be improved. The Hydrographic Note on the back page should be used for this purpose.

Detailed information of charts and publications (coverage of charts, latest editions and distributors) are available on the Maritime and Port Authority Website: www.mpa.gov.sg

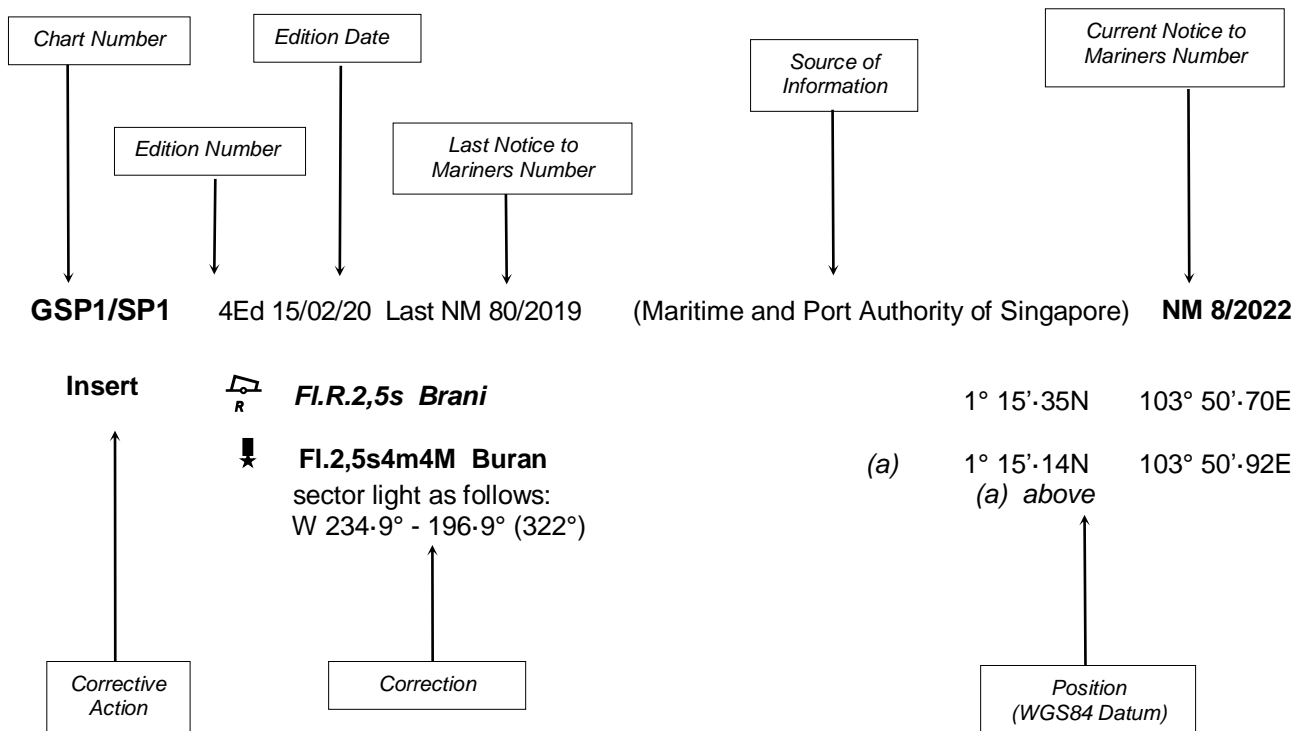
- [Singaporean Notice to Mariners](#)
- [Singaporean Charts](#)
- [Dual-Badged Charts](#)
- [Singapore ENC](#)
- [Malacca and Singapore Straits ENC](#)
- [Singapore Port Information](#)
- [Singapore Tide Tables](#)

Contact information:

Hydrographic Division
Maritime and Port Authority of Singapore
7B Keppel Road
#20-00 Tanjong Pagar Complex
Singapore 089055
Tel : 1800 272 7777 / (65) 6272 7777
Email : hydrographic@mpa.gov.sg

EXPLANATION OF FORMAT

The elements of a typical chart correction are explained below.



Notes:

- Notice to Mariners number followed by:
T indicates a Temporary Notice (eg. **NM 9T/2022**).
P indicates a Preliminary Notice (eg. **NM 10P/2022**).
- Bearings are true reckoned clockwise from 000° to 359°; those relating to lights are from seaward.
- Heights and elevations are above Mean High Water Springs.
- # indicates where amendments are made.
- * indicates source from Maritime and Port Authority of Singapore.

I
AFFECTED CHARTS AND PUBLICATIONS

INDEX OF NOTICES

NOTICE NO.	DESCRIPTION	PAGE NO.
-	New Charts and Publications	2 - 7
*46, *47	Singaporean Chart GSP1/SP1	8
*46, *47	Singaporean Chart 502	8
*48	Temporary and Preliminary Notices	9
*49	Singapore Port Marine Notices/Circulars	11
*50	Amendments to Publications	12
-	Reprint of Maritime Safety Information	13 - 14
-	Extract of Admiralty Notices to Mariners for Dual-Badged Charts	15 - 16

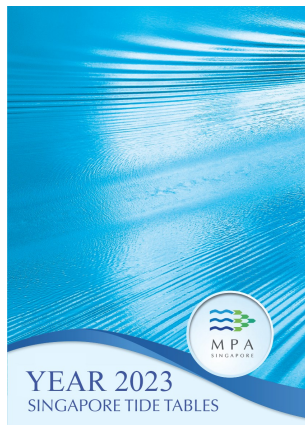
*Source: Maritime and Port Authority of Singapore

II NEW CHARTS AND PUBLICATIONS

SINGAPORE TIDE TABLES YEAR 2023 PUBLISHED ON 26TH SEPTEMBER 2022

Summary of Publication

This publication contains Tidal Height and Tidal Stream Predictions covering stations in Singapore Port Waters and along the Straits of Malacca and Singapore.



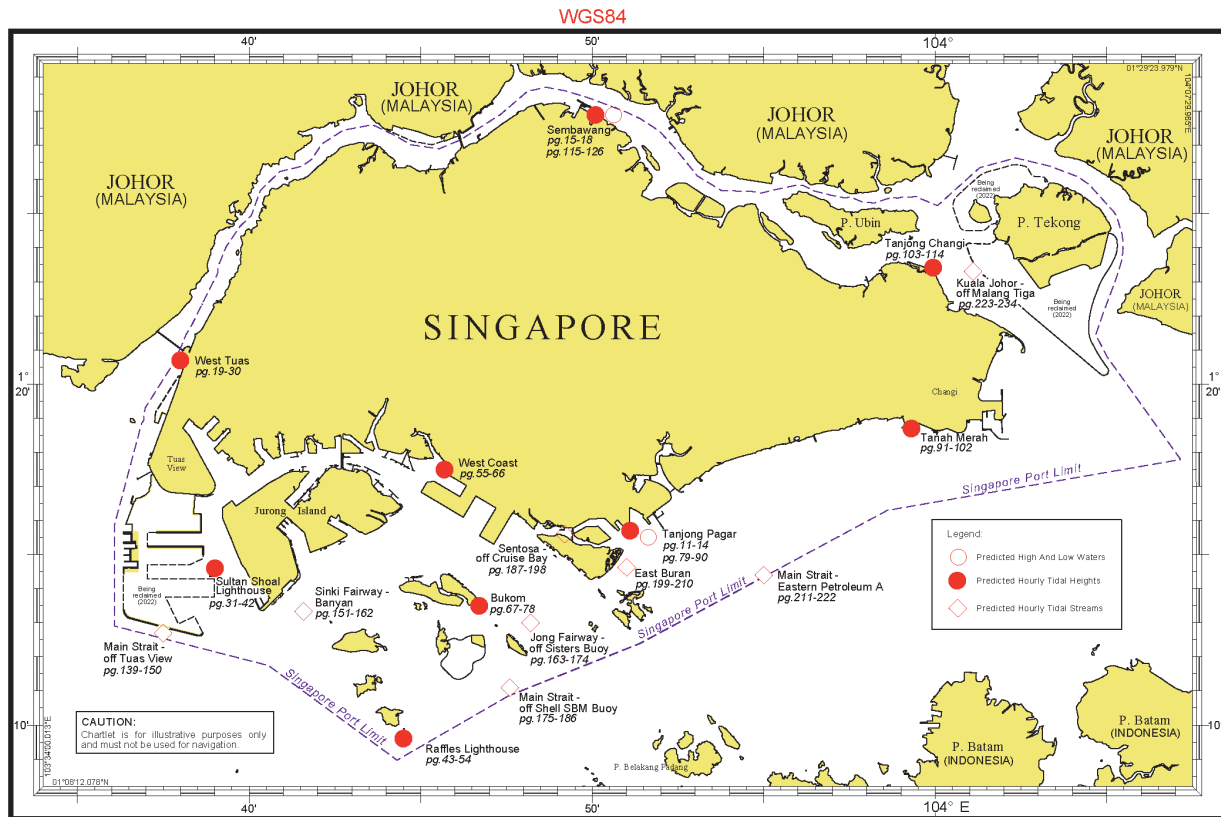
1. **High and Low Water Predictions** at the following stations:
 - a) Tanjong Pagar
 - b) Sembawang
2. **Hourly Tidal Height Predictions** at the following stations:
 - a) West Tuas
 - b) Sultan Shoal Lighthouse
 - c) Raffles Lighthouse
 - d) West Coast
 - e) Bukom
 - f) Tanjong Pagar
 - g) Tanah Merah
 - h) Tanjong Changi
 - i) Sembawang
 - j) Singapore Strait - Horsburgh Lighthouse
3. **Hourly Tidal Stream Predictions** at the following stations:
 - a) Main Strait - off Tuas View
 - b) Sinki Fairway - Banyan
 - c) Jong Fairway - off Sisters Buoy
 - d) Main Strait - off Shell SBM Buoy
 - e) Sentosa - off Cruise Bay
 - f) East Buran
 - g) Main Strait - Eastern Petroleum A
 - h) Kuala Johor - off Malang Tiga
4. **Maximum and Slack Tidal Stream Predictions** at the following stations:
 - a) Malacca Strait - off Pulau Iyu Kecil Light
 - b) Singapore Strait - Selat Phillip
 - c) Singapore Strait - Karang Banteng (Buffalo Rock)
 - d) Singapore Strait - Horsburgh Lighthouse
5. **Malacca Strait - High and Low Water Predictions** at the following stations:
 - a) Kedah Pier, Pulau Pinang
 - b) Port Dickson
 - c) Kuala Batu Pahat

The locations of the above stations are shown in the chartlets below:

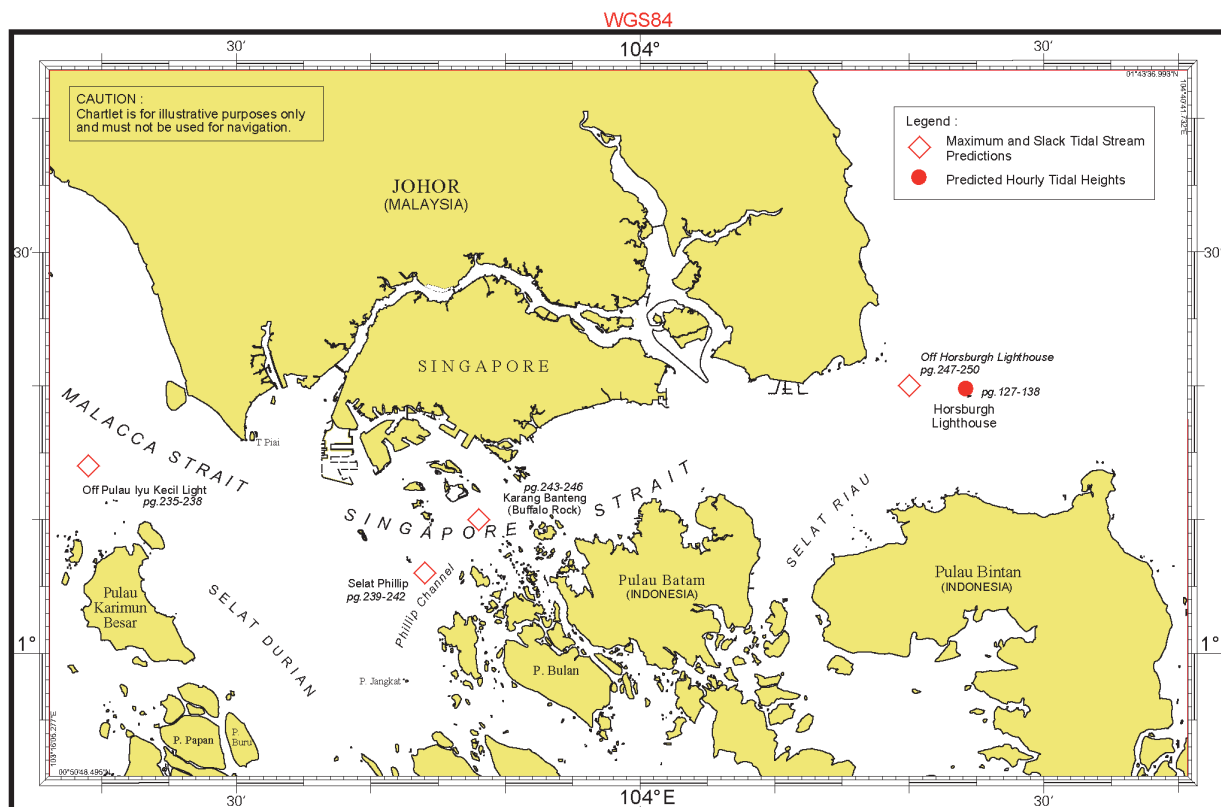
II

NEW CHARTS AND PUBLICATIONS

Tidal Prediction Stations within Singapore Port Waters



Tidal Prediction Stations within Straits of Malacca and Singapore

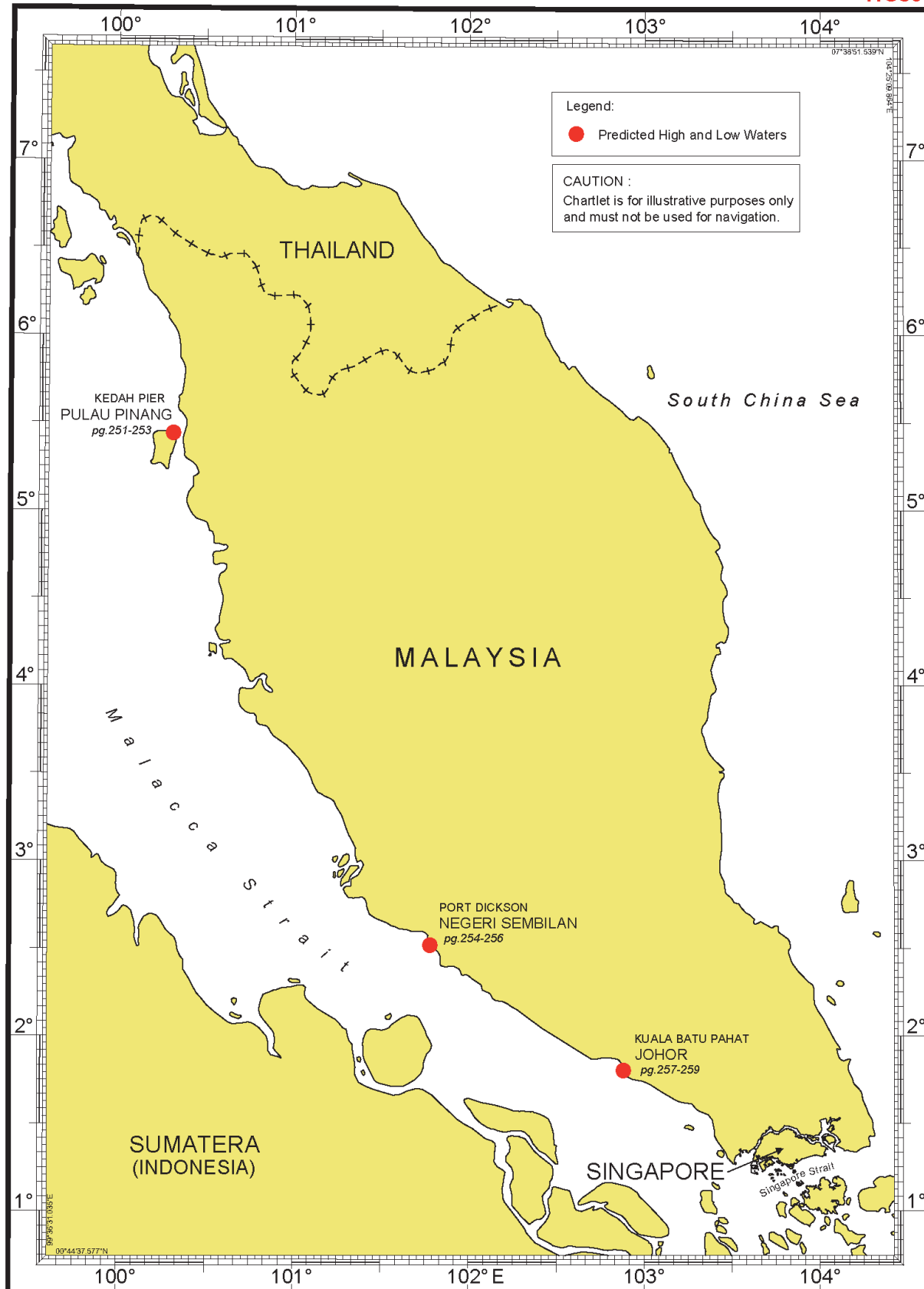


II NEW CHARTS AND PUBLICATIONS

Tidal Prediction Stations In Malacca Strait

LOCATIONS OF PREDICTED TIDAL HEIGHT STATIONS
ALONG THE MALACCA STRAIT

WGS84



II NEW CHARTS AND PUBLICATIONS

NEW EDITION DUAL BADGED CHARTS PUBLISHED 29TH SEPTEMBER 2022

Chart Number : 4030

Title : Port of Singapore

Coverage : Lat 01° 11'·05N 01° 17'·00N
Long 103° 36'·70E 103° 40'·70E

Scale : 1 : 10 000

Date to be Published : 29th September 2022

Size of Chart : 742.0 x 1096.5 mm

Description : This new edition includes updated surveys, changes to topography and aids to navigation.

The existing chart of the same number published on 29th October 2020 has been superseded.

Chart Number : 4032

Title : Port of Singapore
Sinki Fairway

Coverage : Lat 01° 12'·25N 01° 16'·30N
Long 103° 40'·20E 103° 46'·13E

Scale : 1 : 10 000

Date to be Published : 29th September 2022

Size of Chart : 1100.0 x 746.4 mm

Description : This new edition includes updated surveys, changes to topography and aids to navigation.

The existing chart of the same number published on 5th November 2020 has been superseded.

Chart Number : 4034

Title : Port of Singapore
East Jurong Channel, Pasir Panjang Terminal and West Keppel Fairway

Coverage : Lat 01° 14'·50N 01° 18'·55N
Long 103° 42'·70E 103° 48'·60E

Scale : 1 : 10 000

Date to be Published : 29th September 2022

Size of Chart : 1094.4 x 746.4 mm

Description : This new edition includes updated surveys, changes to topography and aids to navigation,

The existing chart of the same number published on 5th November 2020 has been superseded.

II NEW CHARTS AND PUBLICATIONS

NEW EDITION SINGAPORE ENC RELEASED ON 29TH SEPTEMBER 2022

ENC Name : SG5C4030

Location : West Jurong Anchorages and Temasek Fairway

Coverage : Lat 01° 11'·050N 01° 16'·300N
Long 103° 36'·700E 103° 40'·640E

Compilation Scale : 1 : 8 000

Date Released : 29th September 2022

Description : This new edition includes updated surveys, changes to topography and aids to navigation.

The existing cell of the same number released on 29th October 2020 has been superseded.

ENC Name : SG5C4032

Location : Sinki Fairway

Coverage : Lat 01° 12'·250N 01° 16'·300N
Long 103° 40'·640E 103° 45'·580E

Compilation Scale : 1 : 8 000

Date Released : 29th September 2022

Description : This new edition includes updated surveys, changes to topography and aids to navigation.

The existing cell of the same number released on 5th November 2020 has been superseded.

ENC Name : SG5C4034

Location : East Jurong Channel, Pasir Panjang Terminal and West Keppel Fairway

Coverage : Lat 01° 16'·300N 01° 18'·550N
Long 103° 42'·700E 103° 46'·360E

Compilation Scale : 1 : 8 000

Date Released : 29th September 2022

Description : This new edition includes updated surveys, changes to topography and aids to navigation.

The existing cell of the same number released on 5th November 2020 has been superseded.

II NEW CHARTS AND PUBLICATIONS

NEW EDITION SINGAPORE ENC TO BE RELEASED 29TH SEPTEMBER 2022

ENC Name : SG5C4035

Location : Western Anchorages, Jong Fairway and Cruise Bay

Coverage : Lat 01° 10'·900N 01° 16'·900N
Long 103° 45'·580E 103° 49'·425E

Compilation Scale : 1 : 8 000





Date Released : 29th September 2022

Description : This new edition includes updated surveys, changes to topography and aids to navigation.

The existing cell of the same number released on 22nd October 2020 has been superseded.

II

NOTICES TO MARINERS AND CHART CORRECTIONS

GSP1/SP1	6 Ed 17/01/22 Last NM 42/2022	(Maritime Port Authority of Singapore)	*NM 46/2022
Insert	 <i>Fl. Y. 5s DHI-CESS-2</i>	1°19'·16N (Maritime Port Authority of Singapore)	104°03'·13E *NM 47/2022
Move	 <i>Oc(2) Y. 6s 'NEA-WRM-CNB' from:</i>	1°19'·85N	104°02'·54E
	to:	1°19'·02N	104°03'·08E
<hr/>			
502	9 Ed 15/10/21 Last NM 25/2022	(Maritime Port Authority of Singapore)	*NM 46/2022
Insert	 <i>Fl. Y. 5s DHI-CESS-2</i>	1°19'·16N (Maritime Port Authority of Singapore)	104°03'·13E *NM 47/2022
Move	 <i>Oc(2) Y. 6s 'NEA-WRM-CNB' from:</i>	1°19'·85N	104°02'·54E
	to:	1°19'·02N	104°03'·08E

*Source: Maritime and Port Authority of Singapore

II
TEMPORARY AND PRELIMINARY NOTICES

***(NM 48T/2022)**

LEAST DEPTH WITHIN SELAT PANDAN

Remarks : A least depth of 14.4m below CD at position 1°15'·552N Long 103°44'·298E exists within the Selat Pandan.

Mariners are advised to navigate with caution.

Charts affected : Dual Badged BA4032, BA4034, BA4040

ENC affected : SG5C4032

*Source: Maritime and Port Authority of Singapore

II

TEMPORARY AND PRELIMINARY NOTICES

Cancelled Temporary and Preliminary Notices

NIL

III NAVIGATIONAL INFORMATION

*(NM 49/2022)

SINGAPORE PORT MARINE NOTICES / CIRCULARS

The Port Marine Notices/Circulars shortlisted below would be of particular interest to Mariners. Details and complete list of Port Marine Notices/Circulars are available at this link:

<http://www.mpa.gov.sg/web/portal/home/port-of-singapore/circulars-and-notices>

PMC No.**Subject**

19/2022

Crew change and shore leave for cargo ships in the Port of Singapore and application for vaccination

20/2022

Covid-19 measures for vessels in the Port of Singapore

PMN No.**Subject**

56/2022

Reclamation and marine works off Tuas View

57/2022

Works at Sisters' Island Marine Park

58/2022

Construction of temporary ro-ro ramp at Tuas South

62/2022

Reclamation work at Pulau Tekong

63/2022

Mooring and unmooring of vessels off Pulau Tekong

*Source: Maritime and Port Authority of Singapore

III AMENDMENTS TO PUBLICATIONS

*(NM 50/2022) UPDATING OF PUBLICATION “SINGAPORE PORT INFORMATION 2022/2023”

WHARVES AND BERTHS

1. Page 162

Insert the following:

WHARVES AND BERTHS

- I All Depths are referred to Chart Datum unless otherwise stated.
- II For detailed charted information refer to large scale Dual Badged (DB) nautical charts published jointly by MPA and UKHO.
- III **For further information on the wharves, berths and guidelines, refer to individual terminals' Pilotage Guidelines.**

2. **Replace** the following:

1a TUAS F2 TERMINAL (1°15·2'N, 103°37·5'E)

Berth	Length of Berth Box	Depth Alongside (Year Surveyed)
T203	400m	23·0m (2021)
T204	400m	23·0m (2021)
T205	400m	23·0m (2021)
T206	400m	23·0m (2021)
T207	400m	23·0m (2022)
T208	400m	23·0m (2019)

*Source: Maritime and Port Authority of Singapore

IV

REPRINT OF MARITIME SAFETY INFORMATION

The following Maritime Safety Information have been shortlisted, as they would be of particular interest to mariners.

TT418

WEST BOUND DEEP DRAFT VESSELS AND VLCCS ARE REMINDED TO COMPLY WITH THE RULES OF VESSELS NAVIGATING THROUGH THE STRAITS OF MALACCA AND SINGAPORE (SOMS). THEY SHALL ALLOW FOR AN UKC OF AT LEAST 3.5 METRES AT ALL TIMES DURING THE ENTIRE PASSAGE THROUGH THE SOMS AND AS FAR AS IT IS SAFE AND PRACTICABLE, PROCEED AT A SPEED OF NOT MORE THAN 12 KTS OVER THE GROUND IN THE WESTBOUND LANE OF THE SINGAPORE STRAIT (BETWEEN SOUTH OF ST JOHN'S ISLAND & RAFFLES LIGHTHOUSE). THEY ARE ADVISED TO BROADCAST, 8 HOURS BEFORE ENTERING THE TSS, NAVIGATIONAL INFORMATION GIVING NAME, DEADWEIGHT, DRAUGHT, SPEED AND TIMES OF PASSING HORSBURGH LIGHTHOUSE AND RAFFLES LIGHTHOUSE.

TT961

VESSELS INTENDING TO CROSS THE TRAFFIC SEPARATION SCHEME (TSS) OR PRECAUTIONARY AREAS IN THE SINGAPORE STRAIT DURING THE HOURS OF DARKNESS ARE RECOMMENDED TO DISPLAY THE NIGHT SIGNALS CONSISTING OF 3 ALL ROUND GREEN LIGHTS IN A VERTICAL LINE AS DETAILED IN THE MARITIME AND PORT AUTHORITY OF SINGAPORE'S PORT MARINE CIRCULAR, 04 OF 2013 DATED 7 MAY 2013.

TT273

ALL VESSELS ARE ADVISED TO NAVIGATE WITH CAUTION, COMPLY WITH THE COLREGS, MAINTAIN VHF RADIO WATCH AND LISTEN TO TRAFFIC INFORMATION WHEN NAVIGATING IN THE SINGAPORE STRAIT AND PORT WATERS. MARINERS ARE ALSO ADVISED TO KEEP A GOOD LOOKOUT OF FREQUENT FERRIES CROSSING THE SINGAPORE STRAIT.

TT175

VESSELS IN EAST JOHOR STRAIT ARE ADVISED TO NAVIGATE WITH PARTICULAR ALERTNESS AND CAUTION WHEN NEAR THE PROJECT AREAS OFF PULAU TEKONG, CHANGI AND MALANG PAPAN AS SHALLOW WATER AREAS EXIST. VESSELS ARE REMINDED TO PROCEED AT A SAFE SPEED AND MAINTAIN A PROPER LOOK-OUT, PARTICULARLY FOR TUGS AND BARGES NAVIGATING NEAR THE PROJECT AREAS AND PASSENGER FERRIES CROSSING BETWEEN CHANGI AND PULAU TEKONG AND VICINITY OF PASIR GUDANG.

TT883

THERE IS A REPORT OF UNAUTHORISED BOARDING ON 17 SEPT 2022 AT 1650LT IN POSITION LAT 01-17.57N LONG 104-09.48E. MARINERS ARE ADVISED TO KEEP A GOOD LOOK OUT AND MAINTAIN ANTI-PIRACY WATCH.

SR466

REPORT OF ONE MISSING CREW FROM MT. ZEVS ON 0900UTC 10 SEPTEMBER 2022 IN POSITION LAT 02-04.3N LONG 104-44.5E. ALL VESSELS IN THE VICINITY ARE REQUESTED TO KEEP A SHARP LOOKOUT, RENDER NECESSARY ASSISTANCE AND REPORT ANY SIGHTING TO MRCC SINGAPORE VIA TEL +65 62265539 OR EMAIL: POCC@MPA.GOV.SG

TT881

THERE IS A REPORT OF UNAUTHORISED BOARDING ON 07 SEPT 2022 AT 2318 LT IN POSITION LAT 01-16.69N LONG 103-32.62E. MARINERS ARE ADVISED TO KEEP A GOOD LOOK OUT AND MAINTAIN ANTI-PIRACY WATCH.

TT765 (Amended 200930H)

CONDUCTING OF RECLAMATION WORKS BOUNDED BY THE FOLLOWING COORDINATES FROM 1 SEP 2021.

- | | |
|--------------|------------|
| 1. 01-19.63N | 104-24.08E |
| 2. 01-20.05N | 104-24.08E |
| 3. 01-20.28N | 104-24.51E |
| 4. 01-20.26N | 104-24.59E |
| 5. 01-20.18N | 104-24.70E |
| 6. 01-20.06N | 104-24.78E |
| 7. 01-19.88N | 104-24.84E |
| 8. 01-19.68N | 104-24.83E |
| 9. 01-19.63N | 104-24.80E |

VESSELS PASSING IN THE VICINITY ARE ADVISED TO GIVE A WIDE BERTH AND NAVIGATE WITH CAUTION.

IV

REPRINT OF MARITIME SAFETY INFORMATION

The following Maritime Safety Information have been shortlisted, as they would be of particular interest to mariners.

TT643

THERE IS REPORT OF CONCENTRATION OF FISHING VESSELS OBSERVED IN THE EASTBOUND TRAFFIC LANE IN THE VICINITY BETWEEN BUFFALO ROCK AND BATU BERHANTI. ALL VESSELS ARE ADVISED TO PROCEED AT A SAFE SPEED, KEEP A SHARP LOOK OUT AND NAVIGATE WITH EXTREME CAUTION AT ALL TIME.

TT642

ALL MARINERS NAVIGATING THROUGH THE STRAIT OF SINGAPORE ARE REMINDED TO MAINTAIN CLOSE AND CONTINUOUS MONITORING OF VESSEL'S POSITION. IN DETERMINING RISK OF GROUNDING, DIFFERENT METHODS OF POSITION FIXING SHOULD ALSO BE USED AS MEANS OF CROSS-CHECKING.

TT426

ALL MARINERS ARE REMINDED TO NAVIGATE WITH CAUTION IN THE PRECAUTIONARY AREAS AND TSS, MAINTAIN A GOOD LOOKOUT FOR CROSSING TRAFFIC. VESSELS INTENDING TO CROSS THE TSS SHALL DO SO ONLY WHEN IT IS SAFE AND SHALL AT ALL TIMES COMPLY WITH THE COLREGS.

TT399

VESSELS ARRIVING TO SINGAPORE OR TRANSITING THROUGH THE STRAIT ARE RECOMMENDED TO UPDATE THEIR DESTINATION ACCURATELY IN THE AIS TO ENHANCE SITUATIONAL AWARENESS FOR OTHER TRAFFIC IN THE VICINITY. EG: SG-PEBGB FOR PILOT EASTERN BOARDING GROUND BRAVO.

TT363 (AMENDED ON 140821UTC APRIL 2019).

MARINERS ARE REMINDED NOT TO ANCHOR IN ALL AREAS IN THE TSS, INCLUDING PRECAUTIONARY AREAS OF THE STRAITS OF MALACCA AND SINGAPORE AS WELL AS BETWEEN THE LANDWARD LIMITS OF THE TSS AND APPROACHES TO THE PORTS. VESSELS ENTERING ANY PORT IN ANY LITTORAL STATES ARE TO ANCHOR IN THE ANCHORAGES DESIGNATED BY THE RESPECTIVE LITTORAL STATES. MARINERS ARE ALSO REMINDED THAT EVERY CARE SHOULD BE TAKEN TO AVOID ANCHORING IN THE VICINITY OF SUBMARINE CABLES OR PIPELINES.

SR123 (AMENDED ON 100800UTC JUNE 2020).

SEA ROBBERIES ARE REPORTED IN THE SINGAPORE STRAIT. MARINERS ARE TO MAINTAIN A CONSTANT VISUAL AND RADAR WATCH FOR SMALL CRAFT AND REPORT ANY SUSPICIOUS ACTIVITIES IN THE SINGAPORE STRAIT TO VTIS SINGAPORE.

ISSUED BY SINGAPORE PORT OPERATIONS CONTROL CENTRE (as at 28th September 2022)

V

EXTRACT OF ADMIRALTY NOTICES TO MARINERS FOR DUAL BADGED CHARTS

These notices can also be accessed directly from UKHO Website:

<http://www.admiralty.co.uk/maritime-safety-information/admiralty-notices-to-mariners>

3767* SINGAPORE - Depths. Buoy. Obstructions. Light.

Source: Maritime and Port Authority of Singapore

Note: This update is included in New Edition 4032, published late 2022.

Chart 4031 [previous update 2568/22] WGS84 DATUM

Insert	depth, 177	(a)	1° 11' 040N., 103° 42' 434E.
Delete	depth, 179, close NW of:		(a) above
			1° 14' 410N., 103° 38' 980E.

Chart 4035 [previous update 884/22] WGS84 DATUM

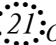
Insert	 Obstn		1° 13' 361N., 103° 45' 514E.
	 Obstn		1° 13' 356N., 103° 45' 545E.
	 Obstn		1° 13' 318N., 103° 45' 618E.
	 Obstn		1° 13' 319N., 103° 45' 634E.
	 Obstn		1° 13' 275N., 103° 45' 617E.
	 Obstn		1° 13' 278N., 103° 45' 649E.
	depth, 205	(a)	1° 13' 244N., 103° 45' 542E.
Delete	depth, 206, close S of:		(a) above

Chart 4036 [previous update 3170/22] WGS84 DATUM

Insert	 Obstn		1° 13' 361N., 103° 45' 514E.
	 Obstn		1° 13' 356N., 103° 45' 545E.
	 Obstn		1° 13' 318N., 103° 45' 618E.
	 Obstn		1° 13' 319N., 103° 45' 634E.
	 Obstn		1° 13' 275N., 103° 45' 617E.
	 Obstn		1° 13' 278N., 103° 45' 649E.
	depth, 205	(a)	1° 13' 244N., 103° 45' 542E.
Delete	depth, 206, close S of:		(a) above

V

EXTRACT OF ADMIRALTY NOTICES TO MARINERS FOR DUAL BADGED CHARTS



These notices can also be accessed directly from UKHO Website:

<http://www.admiralty.co.uk/maritime-safety-information/admiralty-notices-to-mariners>

Chart 4039 [previous update 3170/22] WGS84 DATUM

Insert	 <i>Obstn</i>	1° 13' 36N., 103° 45' 51E.
	 <i>Obstn</i>	1° 13' 32N., 103° 45' 63E.
	depth, 20s	1° 13' 24N., 103° 45' 54E.
	depth, 177 (a)	1° 11' 04N., 103° 42' 43E.
Delete	depth, 179, close N of:	(a) above

Chart 4040 [previous update 3170/22] WGS84 DATUM

Insert	 <i>Obstn</i>	1° 13' 36N., 103° 45' 51E.
	 <i>Obstn</i>	1° 13' 32N., 103° 45' 63E.
	depth, 20s	1° 13' 24N., 103° 45' 54E.
	depth, 177	(a) 1° 11' 04N., 103° 42' 43E.
Delete	depth, 179, close N of:	(a) above
Amend	East Seraya light to, Fl.Y.6s5m3M ADSC-1 1° 16' 40N., 103° 44' 48E.	

Updated to Admiralty Notices to Mariners no. 39 of 2022 dated 29th September 2022

HYDROGRAPHIC NOTE - Instructions

1. Mariners are requested to notify the Chief Hydrographer, Maritime and Port Authority of Singapore, when new or suspected dangers to navigation are discovered, changes are observed in aids to navigation or where corrections to nautical publications may be necessary. Reports, which cannot be confirmed or are lacking in certain details, should not be withheld.
2. Any ambiguities of time, positioning and depth should be stressed and any firm expectation of being able to check the information provided on a following voyage should be mentioned.
3. Mariners using satellite position fixing systems, eg. GPS, should provide details of equipment and datum used (where applicable). Where bearings (true or magnetic) are taken visually or by radar to fix a position, it should include more than two objects in order to provide a check on its accuracy. A position may also be defined by bearing and distance from a conspicuous object eg. beacon, lighthouse etc.
4. The note should include a tracing or a digital image of the chart used and the details should be clearly marked.
5. Echo sounders frequently register greater depths than the advertised maximum depth for the equipment, eg. a trace appearing at 50 metres may be in fact be 550 metres or even 1050 metres for equipment whose maximum depth is 500 metres. Erroneous depths caused by 2nd transmission error can usually be recognised by the following:
 - (a) the tracing being weaker than normal for the depth registered,
 - (b) the trace appearing to pass through the transmission line,
 - (c) the feathery nature of the trace.
6. Upon receipt of a hydrographic note, a Notice to Mariners may be issued. The sender's vessel or name is quoted as the source unless the same information is also received in foreign Notices to Mariners.
7. Reports of shoals, uncharted dangers and defects in aids to navigation may also be made to the appropriate Singapore Port Operations Control Centre on VHF Channels 10, 12, 14, 68 or 73.

HYDROGRAPHIC NOTE

To:

Chief Hydrographer
Maritime and Port Authority of Singapore
7B Keppel Road #20-00 Tanjong Pagar Complex
Singapore 089055

Tel : 1800 272 7777 / (65) 6272 7777
Email : hydrographic@mpa.gov.sg

Sender's Contact Details :

Date :

Name of Vessel :

Address of Sender :

Tel :

Email :

Nature of Observation :

General Location :

Subject :

Position : Lat. Long.

Charts Used :

Date & Time of Observation :

Details :
.....
.....
.....

Attachment :

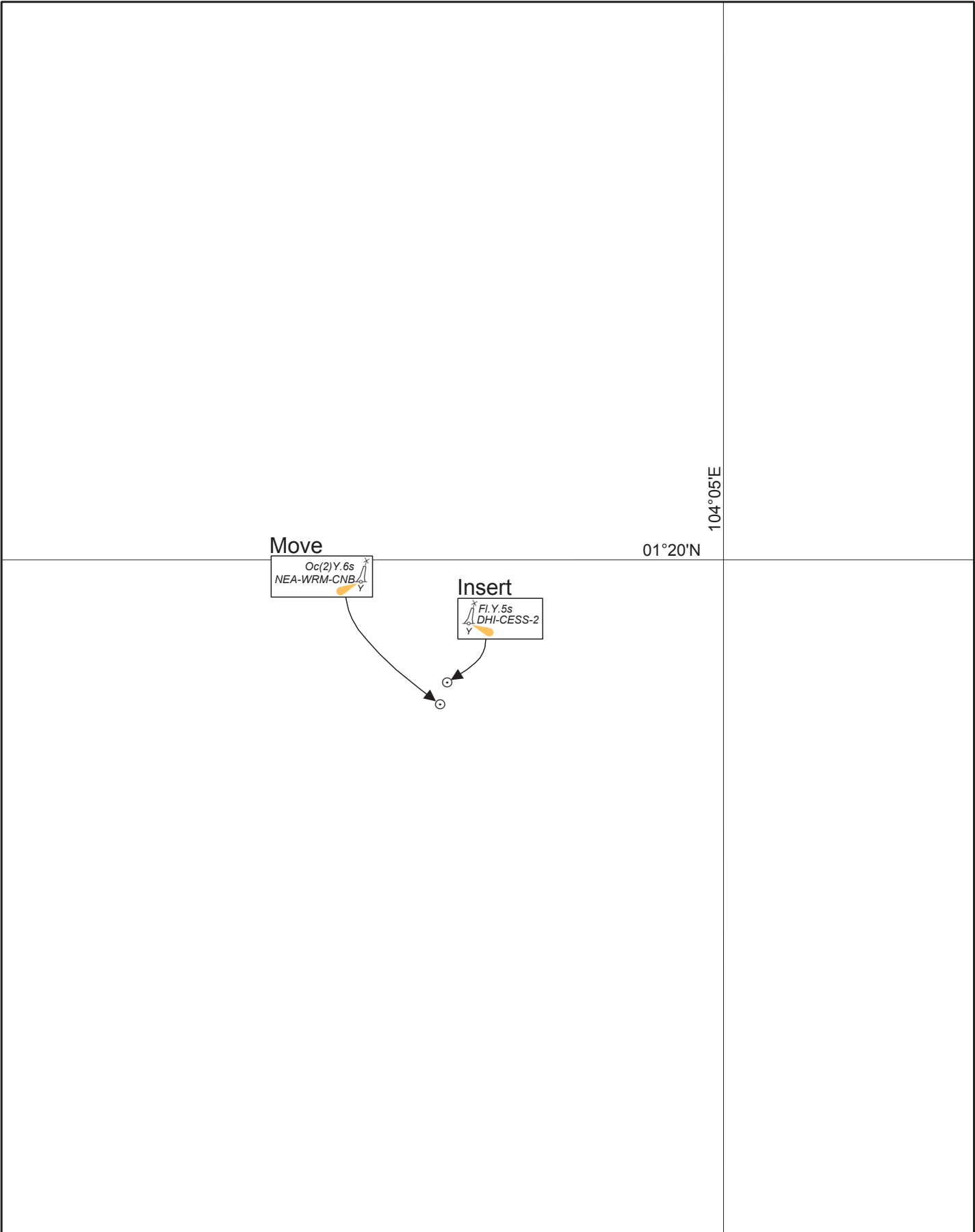
Equipment Used :

Type of Position Fixing : GPS / DGPS Others :

Type of Echo Sounder :

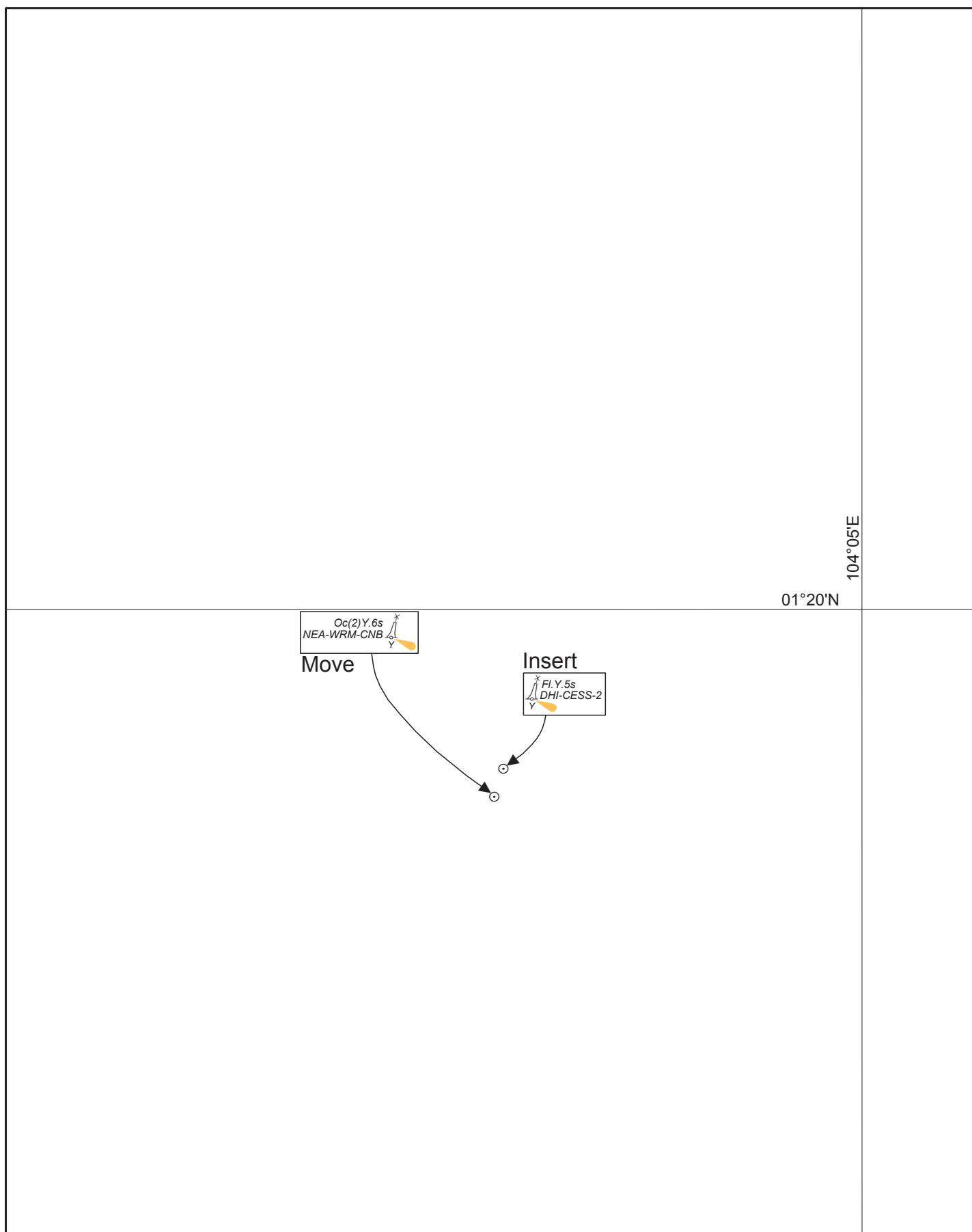
Name and Signature :

Ship's/Company's Stamp :



CORRECTION NO.	SNM EDN NO.	LAST CORRNO NO.	CHART NO.	Location on Chart		
46 & 47	10/2022	42/2022	GSP1/SP1			X

Caution : some computer printers might distort the tracings.
Users are advised to check and, if necessary, adjust settings on the printer



CORRECTION NO.	SNM EDN NO.	LAST CORR N NO.	CHART NO.	Location on Chart		
					X	
46 & 47	10/2022	25/2022	502			

Caution : some computer printers might distort the tracings.
Users are advised to check and, if necessary, adjust settings on the printer