



## SINGAPOREAN NOTICES TO MARINERS

SECTION	CONTENT	Page
I	Affected Charts & Publications	1
II	New Charts and Publications	2
	Notices to Mariners and Chart Corrections	8
	Temporary and Preliminary Notices	9
	Cancelled Temporary and Preliminary Notices	11
III	Navigational Information	12
	Amendments to Publications	13
IV	Reprint of Maritime Safety Information	15
V	Extract of Admiralty Notices to Mariners for Dual-Badged Charts	17

The monthly Notices to Mariners contain information required to keep charts and publications published by the Hydrographic Division, Maritime and Port Authority of Singapore up-to-date.

Mariners are requested to notify the Chief Hydrographer, Maritime and Port Authority of Singapore, immediately of the discovery of new or suspected dangers to navigation, observed changes to aids to navigation and ways Singaporean Charts and Publications can be improved. The Hydrographic Note on the back page should be used for this purpose.

Detailed information of charts and publications (coverage of charts, latest editions and distributors) are available on the Maritime and Port Authority Website: [www.mpa.gov.sg](http://www.mpa.gov.sg)

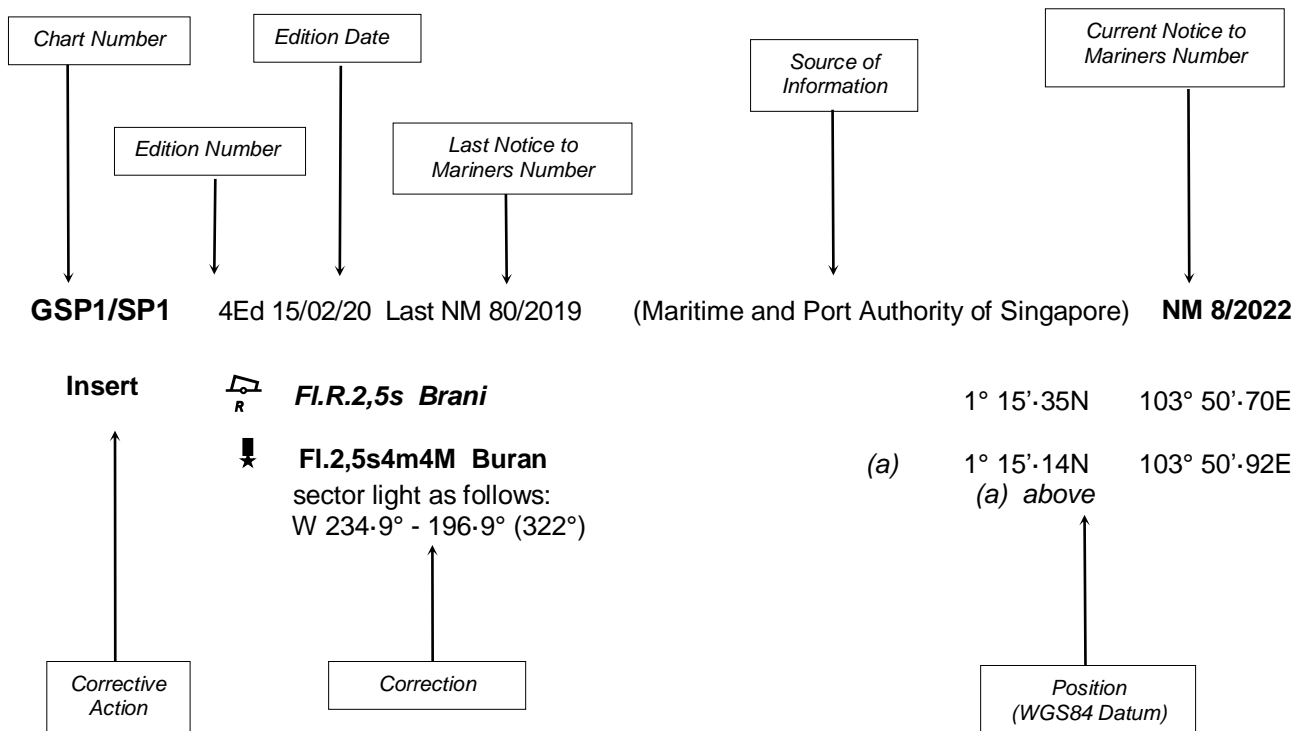
- [Singaporean Notice to Mariners](#)
- [Singaporean Charts](#)
- [Dual-Badged Charts](#)
- [Singapore ENC](#)
- [Malacca and Singapore Straits ENC](#)
- [Singapore Port Information](#)
- [Singapore Tide Tables](#)

### Contact information:

Hydrographic Division  
Maritime and Port Authority of Singapore  
7B Keppel Road  
#20-00 Tanjong Pagar Complex  
Singapore 089055  
Tel : 1800 272 7777 / (65) 6272 7777  
Email : [hydrographic@mpa.gov.sg](mailto:hydrographic@mpa.gov.sg)

## EXPLANATION OF FORMAT

The elements of a typical chart correction are explained below.



### Notes:

- Notice to Mariners number followed by:  
**T** indicates a Temporary Notice (eg. **NM 9T/2022**).  
**P** indicates a Preliminary Notice (eg. **NM 10P/2022**).
- Bearings are true reckoned clockwise from 000° to 359°; those relating to lights are from seaward.
- Heights and elevations are above Mean High Water Springs.
- # indicates where amendments are made.
- \* indicates source from Maritime and Port Authority of Singapore.

I  
**AFFECTED CHARTS AND PUBLICATIONS**

**INDEX OF NOTICES**

<b>NOTICE NO.</b>	<b>DESCRIPTION</b>	<b>PAGE NO.</b>
-	New Charts and Publications	2 - 7
42	Singaporean Chart GSP1/SP1	8
*43T	Temporary and Preliminary Notices	9 - 11
*44	Singapore Port Marine Notices/Circulars	12
*45	Amendments to Publications	13 - 14
-	Reprint of Maritime Safety Information	15 - 16
-	Extract of Admiralty Notices to Mariners for Dual-Badged Charts	17

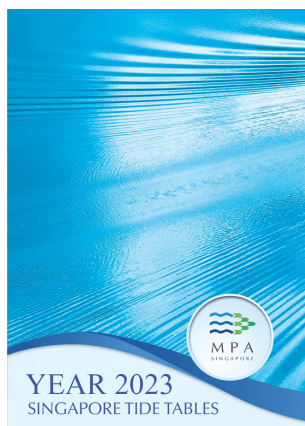
\*Source: Maritime and Port Authority of Singapore

## II NEW CHARTS AND PUBLICATIONS

### SINGAPORE TIDE TABLES YEAR 2023 TO BE PUBLISHED ON 26<sup>TH</sup> SEPTEMBER 2022

#### Summary of Publication

This publication contains Tidal Height and Tidal Stream Predictions covering stations in Singapore Port Waters and along the Straits of Malacca and Singapore.



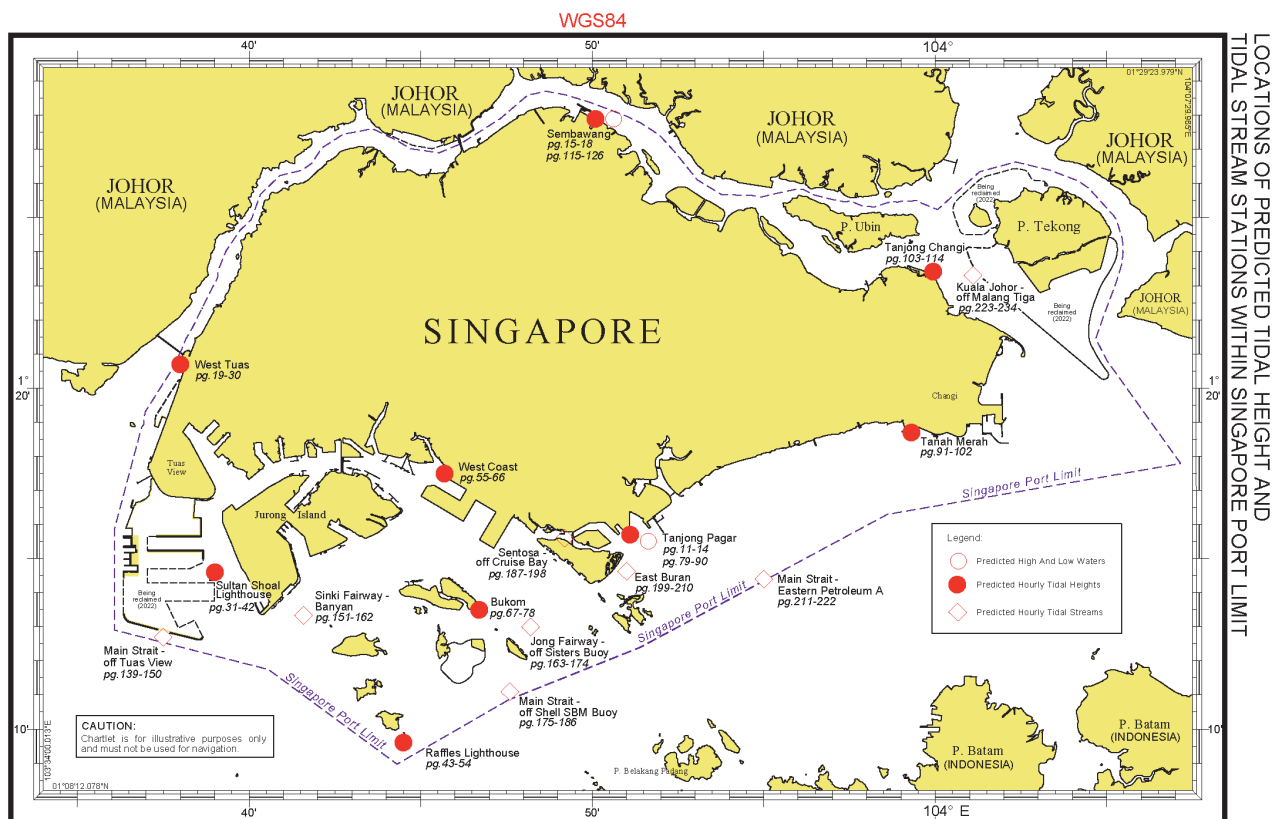
1. **High and Low Water Predictions** at the following stations:
  - a) Tanjong Pagar
  - b) Sembawang
2. **Hourly Tidal Height Predictions** at the following stations:
  - a) West Tuas
  - b) Sultan Shoal Lighthouse
  - c) Raffles Lighthouse
  - d) West Coast
  - e) Bukom
  - f) Tanjong Pagar
  - g) Tanah Merah
  - h) Tanjong Changi
  - i) Sembawang
  - j) Singapore Strait - Horsburgh Lighthouse
3. **Hourly Tidal Stream Predictions** at the following stations:
  - a) Main Strait - off Tuas View
  - b) Sinki Fairway - Banyan
  - c) Jong Fairway - off Sisters Buoy
  - d) Main Strait - off Shell SBM Buoy
  - e) Sentosa - off Cruise Bay
  - f) East Buran
  - g) Main Strait - Eastern Petroleum A
  - h) Kuala Johor - off Malang Tiga
4. **Maximum and Slack Tidal Stream Predictions** at the following stations:
  - a) Malacca Strait - off Pulau Iyu Kecil Light
  - b) Singapore Strait - Selat Phillip
  - c) Singapore Strait - Karang Banteng (Buffalo Rock)
  - d) Singapore Strait - Horsburgh Lighthouse
5. **Malacca Strait - High and Low Water Predictions** at the following stations:
  - a) Kedah Pier, Pulau Pinang
  - b) Port Dickson
  - c) Kuala Batu Pahat

The locations of the above stations are shown in the chartlets below:

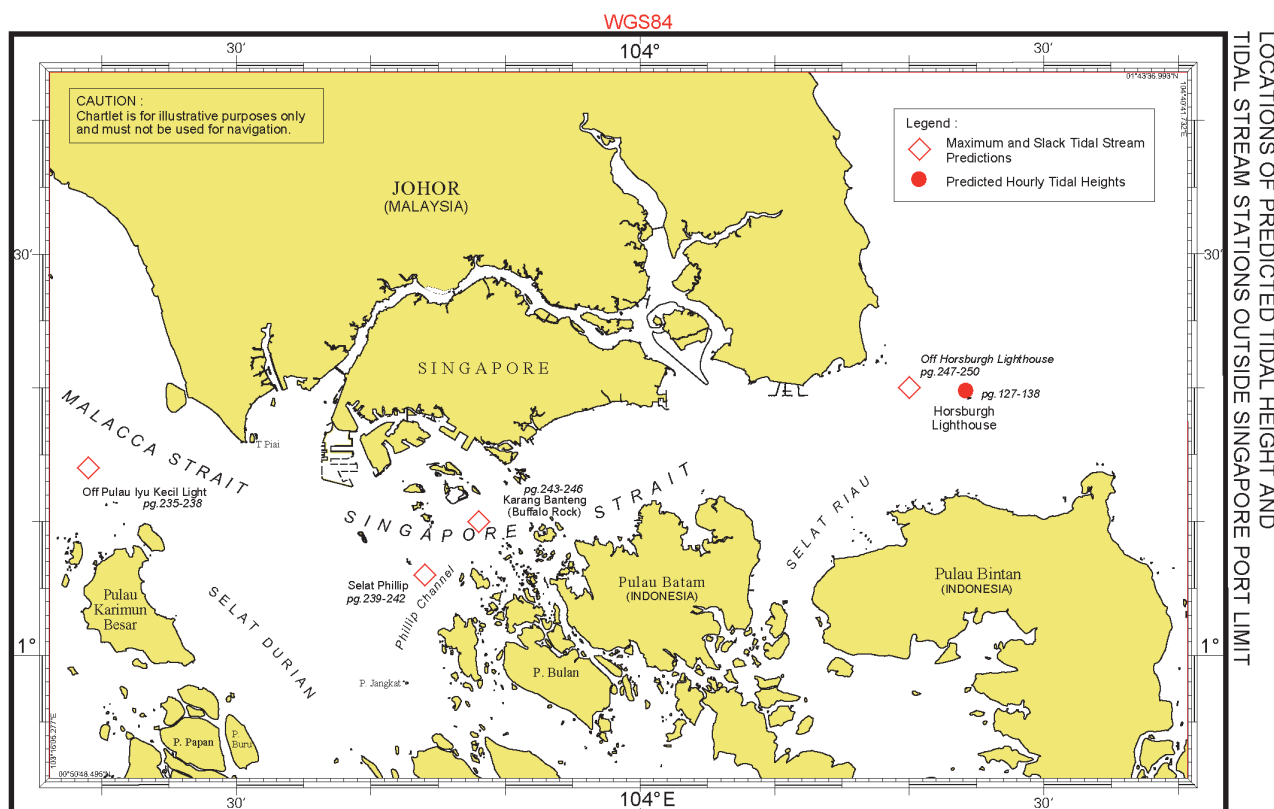
## II

### NEW CHARTS AND PUBLICATIONS

### Tidal Prediction Stations within Singapore Port Waters



### Tidal Prediction Stations within Straits of Malacca and Singapore

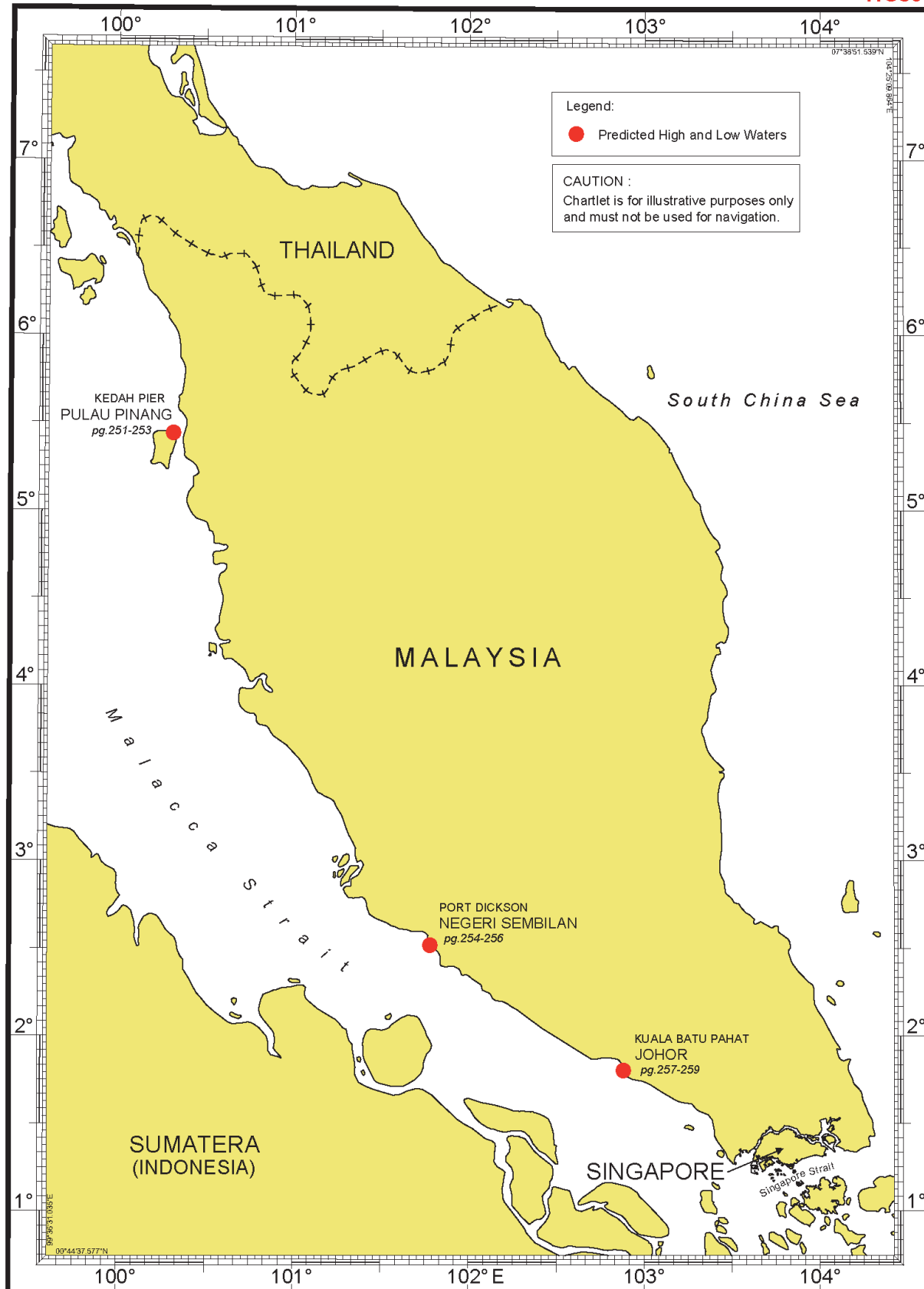


## II NEW CHARTS AND PUBLICATIONS

### Tidal Prediction Stations In Malacca Strait

LOCATIONS OF PREDICTED TIDAL HEIGHT STATIONS  
ALONG THE MALACCA STRAIT

WGS84



## II NEW CHARTS AND PUBLICATIONS

### NEW EDITION DUAL BADGED CHARTS TO BE PUBLISHED ON 29<sup>TH</sup> SEPTEMBER 2022

**Chart Number** : 4030

**Title** : Port of Singapore  
West Jurong Anchorages and Temasek Fairway

**Coverage** : Lat 01° 11'·05N 01° 17'·00N  
Long 103° 36'·70E 103° 40'·70E

**Scale** : 1 : 10 000

**Date to be Published** : 29<sup>th</sup> September 2022

**Size of Chart** : 742.0 x 1096.5 mm

**Description** : This new edition includes updated surveys, changes to topography and aids to navigation.  
  
The existing chart of the same number published on 29th October 2020 will be superseded.

\*Note: Publication date has been changed to 29<sup>th</sup> September 2022

---

**Chart Number** : 4032

**Title** : Port of Singapore  
Sinki Fairway

**Coverage** : Lat 01° 12'·25N 01° 16'·30N  
Long 103° 40'·20E 103° 46'·13E

**Scale** : 1 : 10 000

**Date to be Published** : 29<sup>th</sup> September 2022

**Size of Chart** : 1100.0 x 746.4 mm

**Description** : This new edition includes updated surveys, changes to topography and aids to navigation.  
  
The existing chart of the same number published on 5th November 2020 will be superseded.

\*Note: Publication date has been changed to 29<sup>th</sup> September 2022

---

**Chart Number** : 4034

**Title** : Port of Singapore  
East Jurong Channel, Pasir Panjang Terminal and West Keppel Fairway

**Coverage** : Lat 01° 14'·50N 01° 18'·55N  
Long 103° 42'·70E 103° 48'·60E

**Scale** : 1 : 10 000

**Date to be Published** : 29<sup>th</sup> September 2022

**Size of Chart** : 1094.4 x 746.4 mm

**Description** : This new edition includes updated surveys, changes to topography and aids to navigation,  
  
The existing chart of the same number published on 5th November 2020 will be superseded.

\*Note: Publication date has been changed to 29<sup>th</sup> September 2022

## II NEW CHARTS AND PUBLICATIONS

### NEW EDITION SINGAPORE ENC TO BE RELEASED ON 29<sup>TH</sup> SEPTEMBER 2022

**ENC Name** : SG5C4030

**Location** : West Jurong Anchorages and Temasek Fairway

**Coverage** : Lat 01° 11'·050N 01° 16'·300N  
Long 103° 36'·700E 103° 40'·640E

**Compilation Scale** : 1 : 8 000

**Date Released** : 29<sup>th</sup> September 2022

**Description** : This new edition includes updated surveys, changes to topography and aids to navigation.  
  
The existing cell of the same number released on 29th October 2020 will be superseded.

\*Note: Publication date has been changed to 29<sup>th</sup> September 2022

---

**ENC Name** : SG5C4032

**Location** : Sinki Fairway

**Coverage** : Lat 01° 12'·250N 01° 16'·300N  
Long 103° 40'·640E 103° 45'·580E

**Compilation Scale** : 1 : 8 000

**Date Released** : 29<sup>th</sup> September 2022

**Description** : This new edition includes updated surveys, changes to topography and aids to navigation.  
  
The existing cell of the same number released on 5th November 2020 will be superseded.

\*Note: Publication date has been changed to 29<sup>th</sup> September 2022

---

**ENC Name** : SG5C4034

**Location** : East Jurong Channel, Pasir Panjang Terminal and West Keppel Fairway

**Coverage** : Lat 01° 16'·300N 01° 18'·550N  
Long 103° 42'·700E 103° 46'·360E

**Compilation Scale** : 1 : 8 000

**Date Released** : 29<sup>th</sup> September 2022

**Description** : This new edition includes updated surveys, changes to topography and aids to navigation.  
  
The existing cell of the same number released on 5th November 2020 will be superseded.

\*Note: Publication date has been changed to 29<sup>th</sup> September 2022

---



## II NEW CHARTS AND PUBLICATIONS

### NEW EDITION SINGAPORE ENC TO BE RELEASED ON 29<sup>TH</sup> SEPTEMBER 2022

**ENC Name** : SG5C4035

**Location** : Western Anchorages, Jong Fairway and Cruise Bay

**Coverage** : Lat 01° 10'·900N 01° 16'·900N  
Long 103° 45'·580E 103° 49'·425E

**Compilation Scale** : 1 : 8 000

**Date Released** : 29<sup>th</sup> September 2022

**Description** : This new edition includes updated surveys, changes to topography and aids to navigation.

The existing cell of the same number released on 22nd October 2020 will be superseded.

---

## II

## NOTICES TO MARINERS AND CHART CORRECTIONS

<b>GSP1/SP1</b>	6 Ed 17/01/22 Last NM 24/2022	(Admiralty Notice No. 35/3517/22)	<b>NM 42/2022</b>
<b>Insert</b>	the accompanying note, MARINE FARMS, centred on:	1°22'·40N	103°35'·55E
	legend, <i>Marine Farms (see Note)</i> , centred on:	1°27'·85N	103°51'·69E

---

## II TEMPORARY AND PRELIMINARY NOTICES

**\*(NM 43T/2022)** : **DREDGING WORKS IN TEMASEK FAIRWAY**

**Remarks** : Dredging works are being carried out within the limits of Temasek Fairway.  
(Refer to Maritime and Port Authority of Singapore, Port Marine Notice 31/2022)

**Working Period** : With effect from 10 May 2022 to 09 Nov 2022,  
24 hours daily including Sundays and Public Holidays

1. The working areas are bounded by the following geographical positions:

(WGS84 Datum)

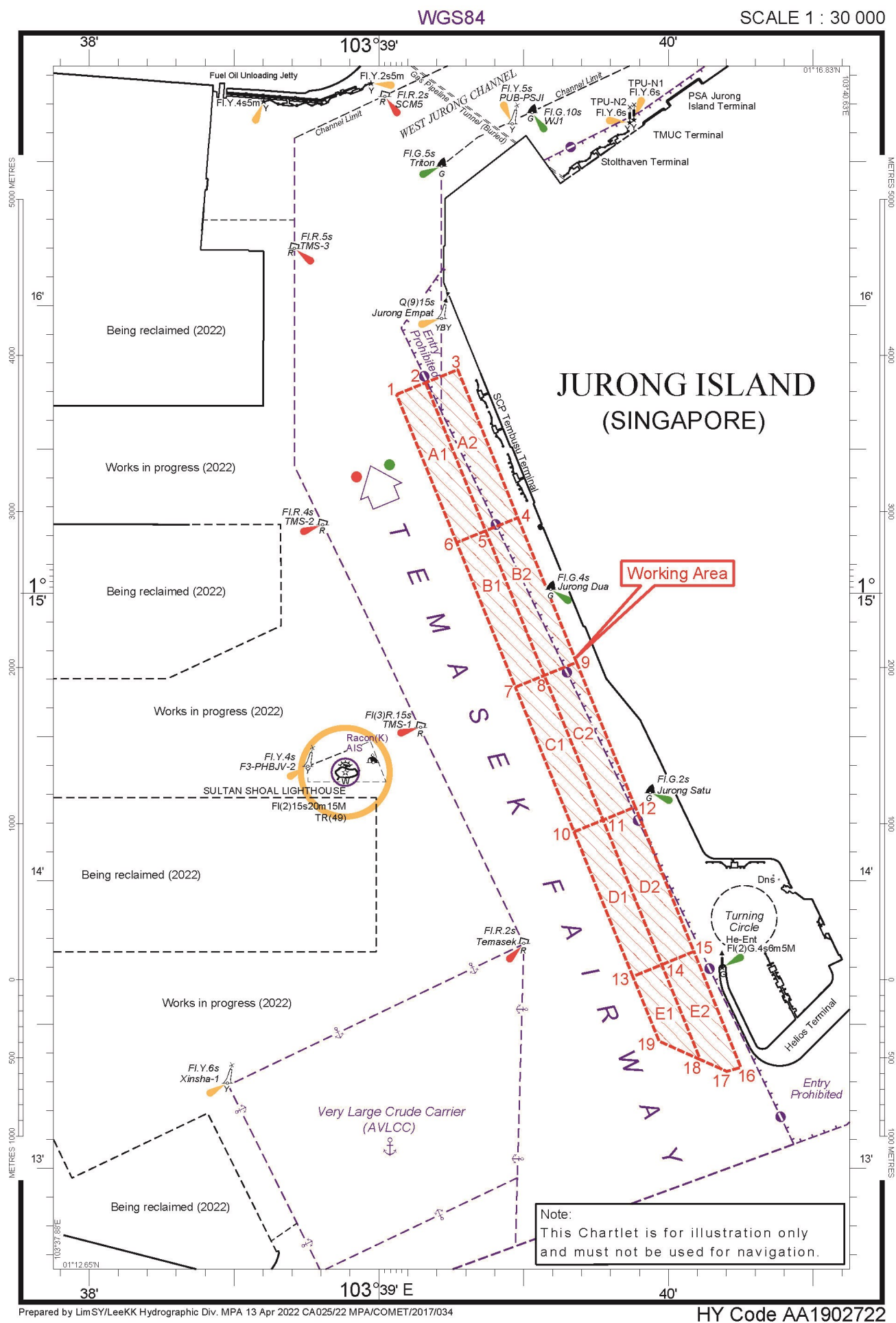
	Latitude (N)	Longitude (E)
(1)	1°15·690'	103°39·061'
(2)	1°15·731'	103°39·161'
(3)	1°15·777'	103°39·272'
(4)	1°15·262'	103°39·480'
(9)	1°14·759'	103°39·683'
(12)	1°14·256'	103°39·885'
(15)	1°13·754'	103°40·088'
(16)	1°13·351'	103°40·250'
(17)	1°13·337'	103°40·202'
(18)	1°13·378'	103°40·110'
(19)	1°13·442'	103°39·968'
(13)	1°13·667'	103°39·877'
(10)	1°14·170'	103°39·674'
(7)	1°14·673'	103°39·471'
(6)	1°15·176'	103°39·269'

2. Mariners are advised to refer to the latest Port Marine Notices available at the MPA website for the latest information and navigate with caution.

3. Navigational warning broadcast will be promulgated by Singapore VTIS on VHF Channel 22 and NAVTEX. Mariners are to maintain a listening watch.

**Charts affected** : Singaporean GSP1/SP1  
Dual Badged BA4030, BA4031, BA4033, BA4038, BA4039 and BA4040

-----  
\*Source: Maritime and Port Authority of Singapore



## II TEMPORARY AND PRELIMINARY NOTICES

### Cancelled Temporary and Preliminary Notices

<i>No. of Notices</i>	<i>Subject</i>	<i>Charts Affected</i>
103T/2021	Dredging Works in Temasek Fairway	Singaporean GSP1/SP1, Dual Badged BA4030, BA4031, BA4033, BA4038, BA4039 and BA4040
30T/2022	Installation of Mooring Buoy	Dual Badged BA4041, BA4042 and BA4043

### III NAVIGATIONAL INFORMATION

\*(NM 44/2022)

**SINGAPORE PORT MARINE NOTICES / CIRCULARS**

The Port Marine Notices/Circulars shortlisted below would be of particular interest to Mariners. Details and complete list of Port Marine Notices/Circulars are available at this link:

<http://www.mpa.gov.sg/web/portal/home/port-of-singapore/circulars-and-notices>

**PMC No.****Subject**

18/2022

Revision of Singapore Standard for Bunkering SS 524 : 2021

**PMN No.****Subject**

31/2022

Dredging Works in Temasek Fairway

55/2022

Relocation of "NEA-WRM-CNB" buoy

---

\*Source: Maritime and Port Authority of Singapore

### III AMENDMENTS TO PUBLICATIONS

\*(NM 45/2022) UPDATING OF PUBLICATION "SINGAPORE PORT INFORMATION 2022/2023"

#### CHARACTERISTICS OF AIDS TO NAVIGATION

##### SINKI FAIRWAY

#### 1. Page 140

Amend the following:

Name Of Beacon / Buoy	Position Lat. N Long. E Deg Min	Structure, Colour & Shape	Light Characteristic	Owner
<b>ADSC-1</b>	01°16·402' 103°44·481'	Yellow metal pole	Fl.Y.6s5m3M	<b>Advario Singapore Chemical Pte Ltd</b>

##### EAST JURONG CHANNEL

#### 2. Page 142

Amend the following:

Name Of Beacon / Buoy	Position Lat. N Long. E Deg Min	Structure, Colour & Shape	Light Characteristic	Owner
<b>ADS-1</b>	01°16·664' 103°44·227'	Yellow framework tower on yellow piles	Fl.Y.10s5m	<b>Advario Singapore Ltd</b>
<b>ADS-2</b>	01°16·768' 103°44·157'	Yellow square daymark on yellow staff on jetty	Fl.Y.2,5s9m	<b>Advario Singapore Ltd</b>
<b>ADS-3</b>	01°16·779' 103°44·096'	Yellow tubular pile	Fl.Y.4s5m	<b>Advario Singapore Ltd</b>
<b>ADS-N1</b>	01°17·415' 103°43·458'	Black/Yellow North Cardinal beacon	Q.3.7m2M	<b>Advario Singapore Ltd</b>
<b>ADS-N2</b>	01°17·377' 103°43·505'	Black/Yellow North Cardinal beacon	Q.3.7m2M	<b>Advario Singapore Ltd</b>
<b>ADS-4</b>	01°17·308' 103°43·597'	Yellow 'X' topmark on yellow beacon pile	Fl.Y.4s3m3M	<b>Advario Singapore Ltd</b>
<b>ADS-5</b>	01°17·429' 103°43·459'	Yellow 'X' topmark on yellow beacon pile	Fl.Y.6s3m3M	<b>Advario Singapore Ltd</b>

\*Source: Maritime and Port Authority of Singapore

### III AMENDMENTS TO PUBLICATIONS

\*(NM 45/2022) UPDATING OF PUBLICATION “SINGAPORE PORT INFORMATION 2022/2023”

#### CHARACTERISTICS OF AIDS TO NAVIGATION

##### EAST JURONG CHANNEL

#### 3. Page 143

Amend the following:

Name Of Beacon / Buoy	Position Lat. N Long. E Deg Min	Structure, Colour & Shape	Light Characteristic	Owner
<b>ADS-6</b> (Lts in line 229-8°)	01°17-315' 103°43-543'	Black beacon pile with white triangle topmark pointing downward	Fl.W.6s9m3M	<b>Advario Singapore Ltd</b>
<b>ADS-7</b> (Lts in line 229-8°)	01°17-383' 103°43-624'	Black beacon pile on MD7 with white triangle topmark pointing upward	Fl.W.4s8m3M	<b>Advario Singapore Ltd</b>

#### 4. Page 210

Amend the following:

<b>ADSC-1</b> .....	140
---------------------	-----

#### 5. Page 212

Amend the following:

<b>ADS-1</b> (Pulau Seraya) .....	142
<b>ADS-2</b> (Pulau Seraya) .....	142
<b>ADS-3</b> (Pulau Seraya) .....	142
<b>ADS-4</b> .....	142
<b>ADS-5</b> .....	142
<b>ADS-6</b> .....	143
<b>ADS-7</b> .....	143
<b>ADS-N1</b> .....	142
<b>ADS-N2</b> .....	142

---

\*Source: Maritime and Port Authority of Singapore



## IV

### REPRINT OF MARITIME SAFETY INFORMATION

The following Maritime Safety Information have been shortlisted, as they would be of particular interest to mariners.

TT418

WEST BOUND DEEP DRAFT VESSELS AND VLCCS ARE REMINDED TO COMPLY WITH THE RULES OF VESSELS NAVIGATING THROUGH THE STRAITS OF MALACCA AND SINGAPORE (SOMS). THEY SHALL ALLOW FOR AN UKC OF AT LEAST 3.5 METRES AT ALL TIMES DURING THE ENTIRE PASSAGE THROUGH THE SOMS AND AS FAR AS IT IS SAFE AND PRACTICABLE, PROCEED AT A SPEED OF NOT MORE THAN 12 KTS OVER THE GROUND IN THE WESTBOUND LANE OF THE SINGAPORE STRAIT (BETWEEN SOUTH OF ST JOHN'S ISLAND & RAFFLES LIGHTHOUSE). THEY ARE ADVISED TO BROADCAST, 8 HOURS BEFORE ENTERING THE TSS, NAVIGATIONAL INFORMATION GIVING NAME, DEADWEIGHT, DRAUGHT, SPEED AND TIMES OF PASSING HORSBURGH LIGHTHOUSE AND RAFFLES LIGHTHOUSE.

TT961

VESSELS INTENDING TO CROSS THE TRAFFIC SEPARATION SCHEME (TSS) OR PRECAUTIONARY AREAS IN THE SINGAPORE STRAIT DURING THE HOURS OF DARKNESS ARE RECOMMENDED TO DISPLAY THE NIGHT SIGNALS CONSISTING OF 3 ALL ROUND GREEN LIGHTS IN A VERTICAL LINE AS DETAILED IN THE MARITIME AND PORT AUTHORITY OF SINGAPORE'S PORT MARINE CIRCULAR, 04 OF 2013 DATED 7 MAY 2013.

TT273

ALL VESSELS ARE ADVISED TO NAVIGATE WITH CAUTION, COMPLY WITH THE COLREGS, MAINTAIN VHF RADIO WATCH AND LISTEN TO TRAFFIC INFORMATION WHEN NAVIGATING IN THE SINGAPORE STRAIT AND PORT WATERS. MARINERS ARE ALSO ADVISED TO KEEP A GOOD LOOKOUT OF FREQUENT FERRIES CROSSING THE SINGAPORE STRAIT.

TT175

VESSELS IN EAST JOHOR STRAIT ARE ADVISED TO NAVIGATE WITH PARTICULAR ALERTNESS AND CAUTION WHEN NEAR THE PROJECT AREAS OFF PULAU TEKONG, CHANGI AND MALANG PAPAN AS SHALLOW WATER AREAS EXIST. VESSELS ARE REMINDED TO PROCEED AT A SAFE SPEED AND MAINTAIN A PROPER LOOK-OUT, PARTICULARLY FOR TUGS AND BARGES NAVIGATING NEAR THE PROJECT AREAS AND PASSENGER FERRIES CROSSING BETWEEN CHANGI AND PULAU TEKONG AND VICINITY OF PASIR GUDANG.

TT878

THERE IS A REPORT OF UNAUTHORISED BOARDING ON 29 AUGUST 2022 AT 0402 LT IN POSITION LAT 01-07.90N LONG 103-30.05E. MARINERS ARE ADVISED TO KEEP A GOOD LOOK OUT AND MAINTAIN ANTI-PIRACY WATCH.

TT877

THERE IS A REPORT OF UNAUTHORISED BOARDING ON 26 AUGUST 2022 AT 1928H IN POSITION LAT 01-17.05N LONG 104-20.06E. MARINERS ARE ADVISED TO KEEP A GOOD LOOK OUT AND MAINTAIN ANTI-PIRACY WATCH.

TT765 (Amended 200930H)

CONDUCTING OF RECLAMATION WORKS BOUNDED BY THE FOLLOWING COORDINATES FROM 1 SEP 2021.

- |              |            |
|--------------|------------|
| 1. 01-19.63N | 104-24.08E |
| 2. 01-20.05N | 104-24.08E |
| 3. 01-20.28N | 104-24.51E |
| 4. 01-20.26N | 104-24.59E |
| 5. 01-20.18N | 104-24.70E |
| 6. 01-20.06N | 104-24.78E |
| 7. 01-19.88N | 104-24.84E |
| 8. 01-19.68N | 104-24.83E |
| 9. 01-19.63N | 104-24.80E |

VESSELS PASSING IN THE VICINITY ARE ADVISED TO GIVE A WIDE BERTH AND NAVIGATE WITH CAUTION.

## IV

### REPRINT OF MARITIME SAFETY INFORMATION

The following Maritime Safety Information have been shortlisted, as they would be of particular interest to mariners.

TT643

THERE IS REPORT OF CONCENTRATION OF FISHING VESSELS OBSERVED IN THE EASTBOUND TRAFFIC LANE IN THE VICINITY BETWEEN BUFFALO ROCK AND BATU BERHANTI. ALL VESSELS ARE ADVISED TO PROCEED AT A SAFE SPEED, KEEP A SHARP LOOK OUT AND NAVIGATE WITH EXTREME CAUTION AT ALL TIME.

TT642

ALL MARINERS NAVIGATING THROUGH THE STRAIT OF SINGAPORE ARE REMINDED TO MAINTAIN CLOSE AND CONTINUOUS MONITORING OF VESSEL'S POSITION. IN DETERMINING RISK OF GROUNDING, DIFFERENT METHODS OF POSITION FIXING SHOULD ALSO BE USED AS MEANS OF CROSS-CHECKING.

TT426

ALL MARINERS ARE REMINDED TO NAVIGATE WITH CAUTION IN THE PRECAUTIONARY AREAS AND TSS, MAINTAIN A GOOD LOOKOUT FOR CROSSING TRAFFIC. VESSELS INTENDING TO CROSS THE TSS SHALL DO SO ONLY WHEN IT IS SAFE AND SHALL AT ALL TIMES COMPLY WITH THE COLREGS.

TT399

VESSELS ARRIVING TO SINGAPORE OR TRANSITING THROUGH THE STRAIT ARE RECOMMENDED TO UPDATE THEIR DESTINATION ACCURATELY IN THE AIS TO ENHANCE SITUATIONAL AWARENESS FOR OTHER TRAFFIC IN THE VICINITY. EG: SG-PEBGB FOR PILOT EASTERN BOARDING GROUND BRAVO.

TT363 (AMENDED ON 140821UTC APRIL 2019).

MARINERS ARE REMINDED NOT TO ANCHOR IN ALL AREAS IN THE TSS, INCLUDING PRECAUTIONARY AREAS OF THE STRAITS OF MALACCA AND SINGAPORE AS WELL AS BETWEEN THE LANDWARD LIMITS OF THE TSS AND APPROACHES TO THE PORTS. VESSELS ENTERING ANY PORT IN ANY LITTORAL STATES ARE TO ANCHOR IN THE ANCHORAGES DESIGNATED BY THE RESPECTIVE LITTORAL STATES. MARINERS ARE ALSO REMINDED THAT EVERY CARE SHOULD BE TAKEN TO AVOID ANCHORING IN THE VICINITY OF SUBMARINE CABLES OR PIPELINES.

SR123 (AMENDED ON 100800UTC JUNE 2020).

SEA ROBBERIES ARE REPORTED IN THE SINGAPORE STRAIT. MARINERS ARE TO MAINTAIN A CONSTANT VISUAL AND RADAR WATCH FOR SMALL CRAFT AND REPORT ANY SUSPICIOUS ACTIVITIES IN THE SINGAPORE STRAIT TO VTIS SINGAPORE.

---

ISSUED BY SINGAPORE PORT OPERATIONS CONTROL CENTRE (as at 31<sup>st</sup> August 2022)

## V

## EXTRACT OF ADMIRALTY NOTICES TO MARINERS FOR DUAL BADGED CHARTS

These notices can also be accessed directly from UKHO Website:

<http://www.admiralty.co.uk/maritime-safety-information/admiralty-notices-to-mariners>

### 3170\* SINGAPORE - Mooring buoys.

Source: Maritime and Port Authority of Singapore

#### Chart 4032 [ previous update 2568/22 ] WGS84 DATUM

Delete	 SEMCO 2	1° 12'·888N., 103° 44'·400E.
	 SEMCO 1	1° 12'·872N., 103° 44'·489E.

#### Chart 4036 [ previous update 2922/22 ] WGS84 DATUM

Delete	 SEMCO 1	1° 12'·872N., 103° 44'·489E.
--------	---	------------------------------

#### Chart 4039 [ previous update 2922/22 ] WGS84 DATUM

Delete		1° 12'·89N., 103° 44'·40E.
		1° 12'·88N., 103° 44'·48E.

#### Chart 4040 [ previous update 2922/22 ] WGS84 DATUM

Delete		1° 12'·89N., 103° 44'·40E.
		1° 12'·88N., 103° 44'·48E.

### 3171(P)/22 SINGAPORE - Mooring buoys.

Source: Maritime and Port Authority of Singapore

1.

Update	Feature	Position
Delete	mooring buoy, SEMCO 2	1° 12'·89N., 103° 44'·40E.
	mooring buoy, SEMCO 1	1° 12'·87N., 103° 44'·49E.

#### Chart affected - 8176

### 3517\* MALAYSIA - Peninsular Malaysia, West Coast - Legends. Note.

Source: UKHO

#### Chart 4044 [ previous update 2939/22 ] WGS84 DATUM

Insert	the accompanying note, MARINE FARMS, centred on:	1° 28'·52N., 103° 53'·46E.
	legend, Marine Farms (see Note), centred on:	1° 27'·85N., 103° 51'·45E.

#### Chart 4044 (Panel B, Pelabuhan Johor, (Johor Port)) [ previous update 2939/22 ] WGS84 DATUM

Insert	legend, Marine Farms (see Note), centred on:	1° 27'·63N., 103° 51'·74E.
--------	--	----------------------------

*To accompany Notice to Mariners 3517/22*

*On Chart 4044*

**MARINE FARMS (1° 27'·7N 103° 51'·5E)**

It has been reported that the marine farms in this area have extended into the channel. Marine farms may be marked by lit or unlit buoys or beacons. Mariners are advised to avoid these structures and their associated moorings and navigate with caution in the vicinity of these marine farms.

## **HYDROGRAPHIC NOTE - Instructions**

1. Mariners are requested to notify the Chief Hydrographer, Maritime and Port Authority of Singapore, when new or suspected dangers to navigation are discovered, changes are observed in aids to navigation or where corrections to nautical publications may be necessary. Reports, which cannot be confirmed or are lacking in certain details, should not be withheld.
2. Any ambiguities of time, positioning and depth should be stressed and any firm expectation of being able to check the information provided on a following voyage should be mentioned.
3. Mariners using satellite position fixing systems, eg. GPS, should provide details of equipment and datum used (where applicable). Where bearings (true or magnetic) are taken visually or by radar to fix a position, it should include more than two objects in order to provide a check on its accuracy. A position may also be defined by bearing and distance from a conspicuous object eg. beacon, lighthouse etc.
4. The note should include a tracing or a digital image of the chart used and the details should be clearly marked.
5. Echo sounders frequently register greater depths than the advertised maximum depth for the equipment, eg. a trace appearing at 50 metres may be in fact be 550 metres or even 1050 metres for equipment whose maximum depth is 500 metres. Erroneous depths caused by 2nd transmission error can usually be recognised by the following:
  - (a) the tracing being weaker than normal for the depth registered,
  - (b) the trace appearing to pass through the transmission line,
  - (c) the feathery nature of the trace.
6. Upon receipt of a hydrographic note, a Notice to Mariners may be issued. The sender's vessel or name is quoted as the source unless the same information is also received in foreign Notices to Mariners.
7. Reports of shoals, uncharted dangers and defects in aids to navigation may also be made to the appropriate Singapore Port Operations Control Centre on VHF Channels 10, 12, 14, 68 or 73.

## HYDROGRAPHIC NOTE

To:

Chief Hydrographer  
Maritime and Port Authority of Singapore  
7B Keppel Road #20-00 Tanjong Pagar Complex  
Singapore 089055

Tel : 1800 272 7777 / (65) 6272 7777  
Email : [hydrographic@mpa.gov.sg](mailto:hydrographic@mpa.gov.sg)

### **Sender's Contact Details** :

Date : .....

Name of Vessel : .....

Address of Sender : .....

Tel : .....

Email : .....

### **Nature of Observation** :

General Location : .....

Subject : .....

Position : Lat. .... Long. ....

Charts Used : .....

Date & Time of Observation : .....

Details : .....

.....

.....

Attachment : .....

### **Equipment Used** :

Type of Position Fixing : GPS / DGPS Others : .....

Type of Echo Sounder : .....

Name and Signature : .....

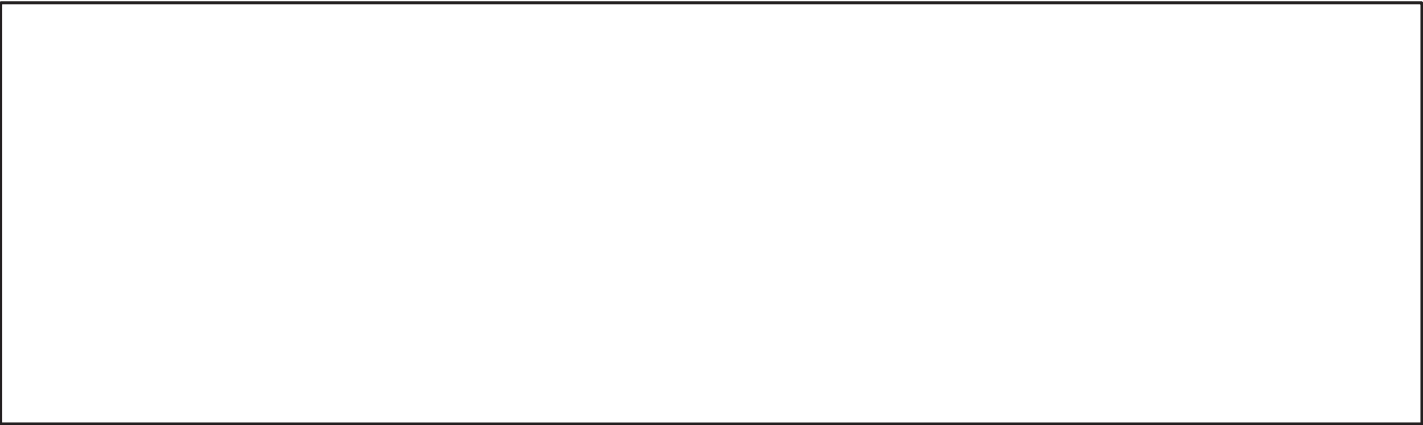
Ship's/Company's Stamp : .....

*To accompany Notice to Mariners 42/22*

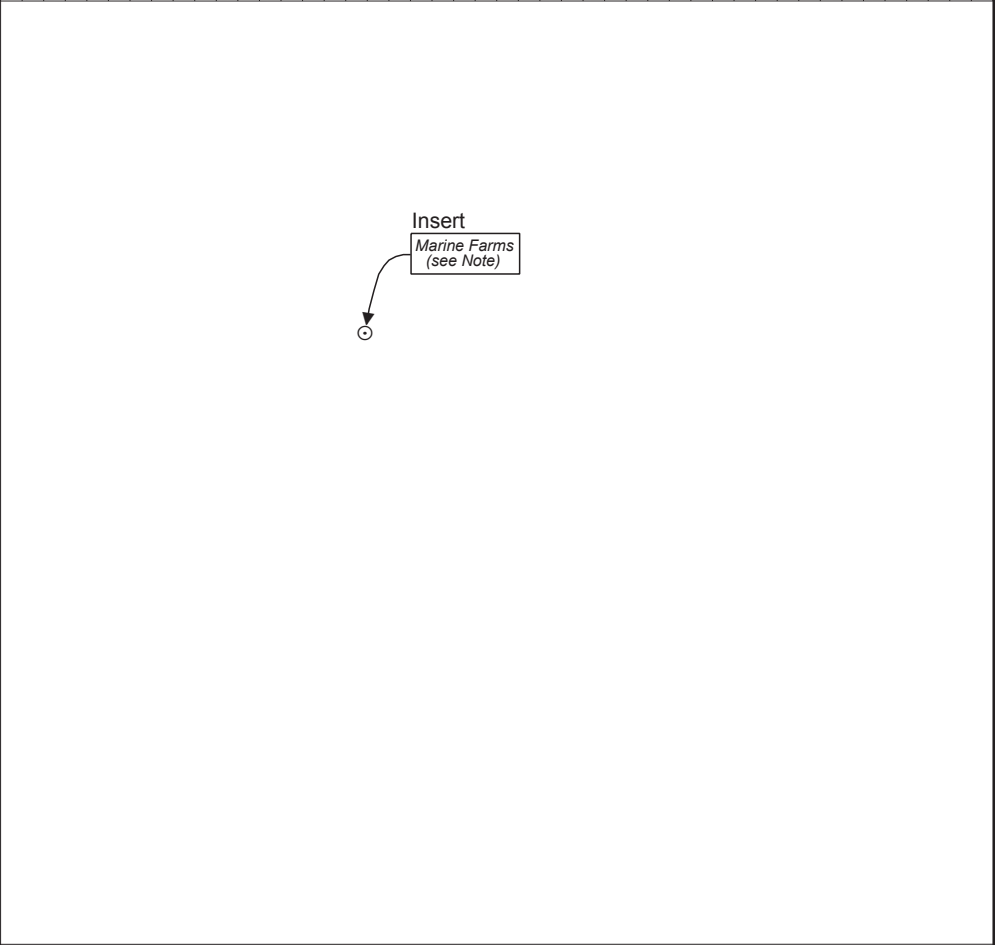
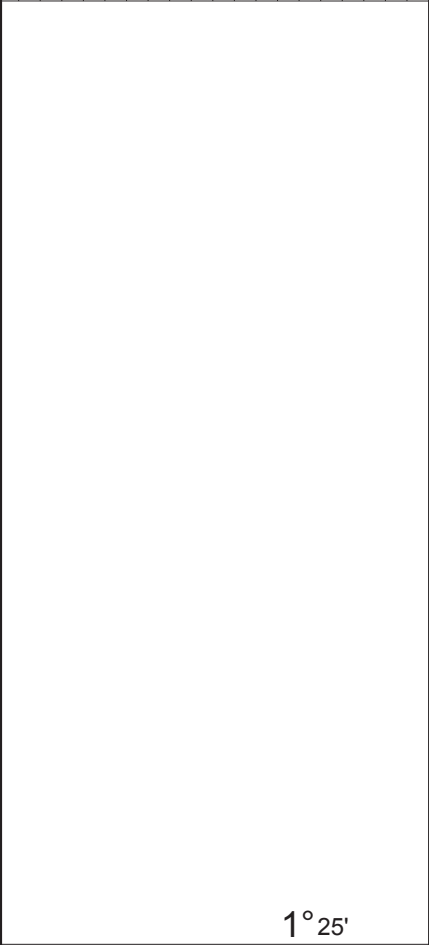
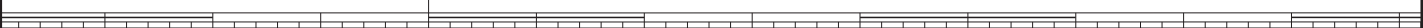
*On Chart GSP1/SP1*

MARINE FARMS (1° 28'·0N 103° 51'·6E)

It has been reported that the marine farms in this area have extended into the channel. Marine farms may be marked by lit or unlit buoys or beacons. Mariners are advised to avoid these structures and their associated moorings and navigate with caution in the vicinity of these marine farms.



103° 50'



Insert  
Marine Farms  
(see Note)



1° 25'



CORRECTION NO.	SNM EDN NO.	LAST CORR N NO.	CHART NO.	Location on Chart		
					X	
42	9/2022	24/2022	GSP1/SP1			

Caution : some computer printers might distort the tracings.  
Users are advised to check and, if necessary, adjust settings on the printer