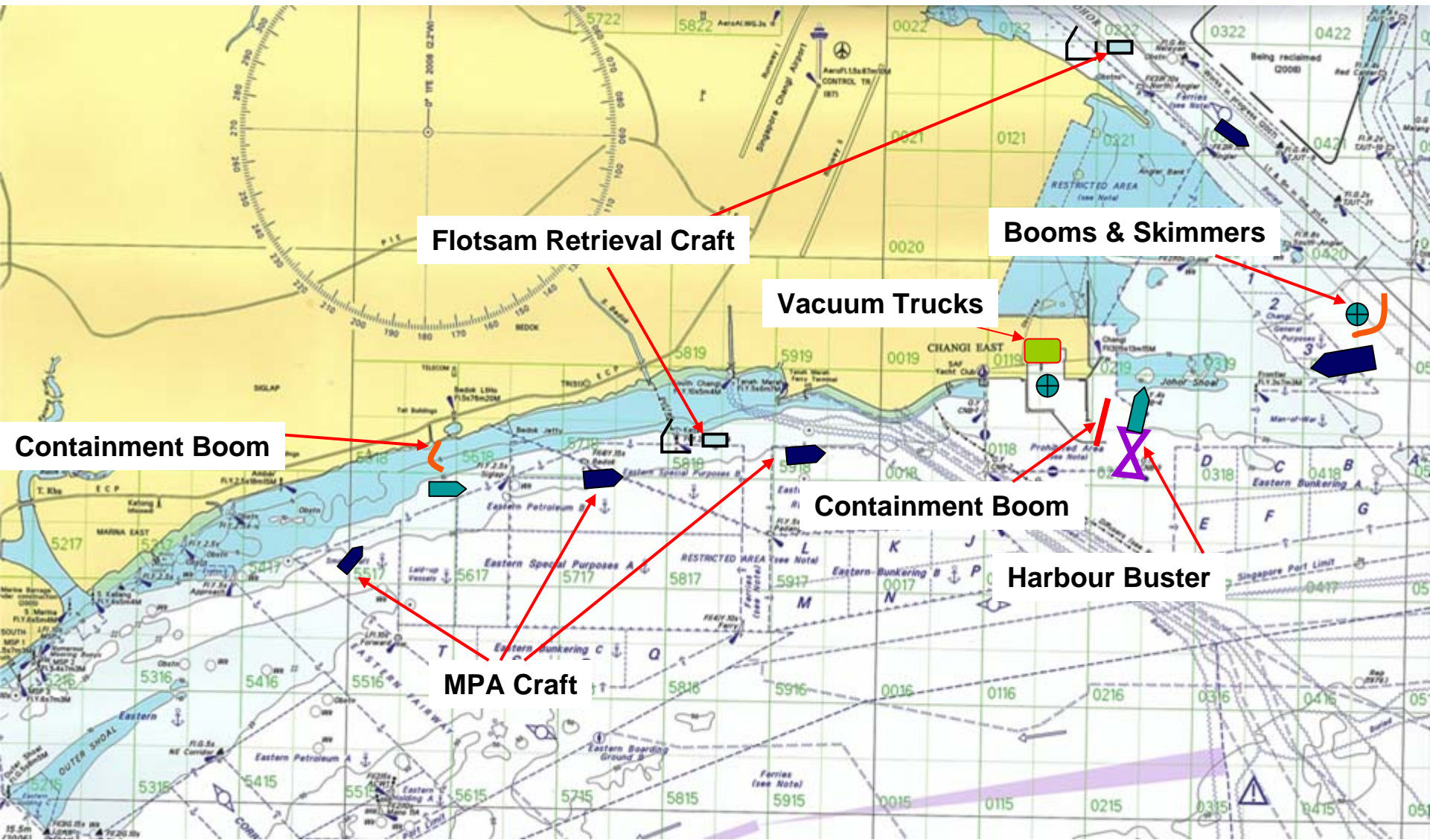


Annex A

Map of area



Annex B

Craft towing the harbour buster



Annex B

Harbour buster with collected oil and debris



Issued by MPA at 30 May 2010, 1645 hrs

Annex B

**Flotsam retrieval craft removing treated
oil mixed with debris**



Annex B

Treated oil mixed with debris collected by flotsam retrieval craft

