
**OPPORTUNITIES
FOR MARINE INSURANCE
IN SINGAPORE**

ASSURANCE

AND

G

R

O

W

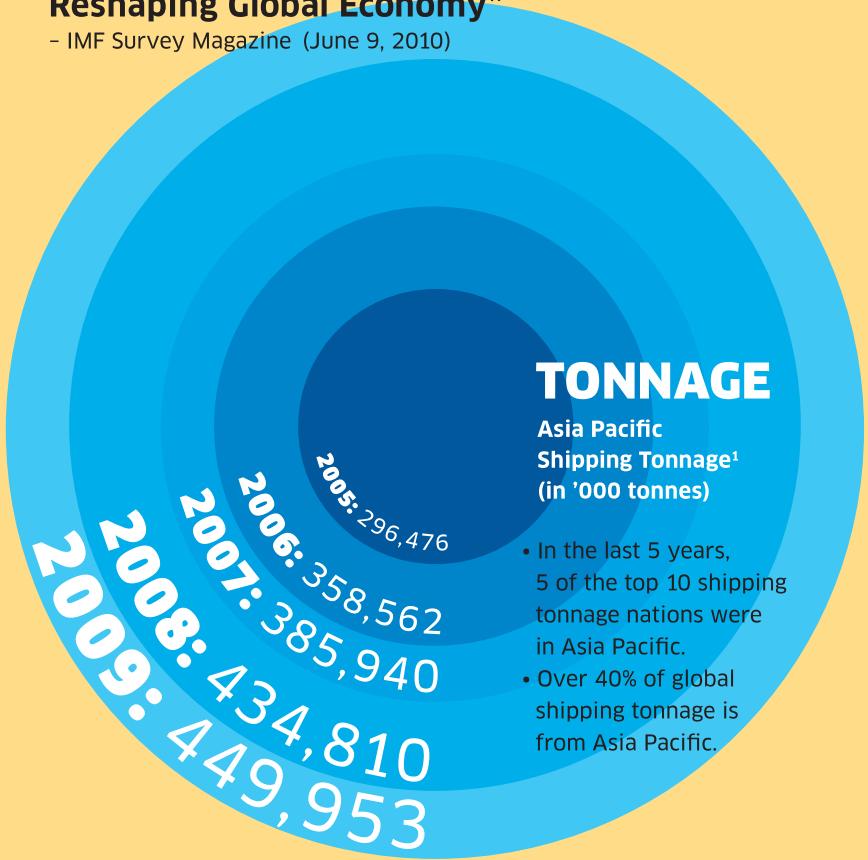
T

H

ASIA PACIFIC LEADS THE WAY IN GROWTH

“Asia Playing Crucial Part In Reshaping Global Economy”

- IMF Survey Magazine (June 9, 2010)



TONNAGE

Asia Pacific Shipping Tonnage¹ (in '000 tonnes)

- In the last 5 years, 5 of the top 10 shipping tonnage nations were in Asia Pacific.
- Over 40% of global shipping tonnage is from Asia Pacific.

2005-2006

6.6%

2006-2007

12.9%

2007-2008

28%

2008-2009

34.3%

YEAR-ON-YEAR GROWTH OF PREMIUMS WRITTEN FROM SINGAPORE

International marine insurers and brokers are setting up in Asia Pacific and more marine insurance business is written from the region. In Singapore alone, the insurance premiums² have increased by over 100% over the last 5 years.

As a leading maritime centre, Singapore is where the international maritime community congregates and where ideas and opportunities abound. Offering unparalleled access to the global and regional markets, a pro-business environment, a ready pool of skilled expertise, an extensive business network and quality living, Singapore is your key to Asia Pacific.

SINGAPORE IS YOUR KEY TO ASIA PACIFIC

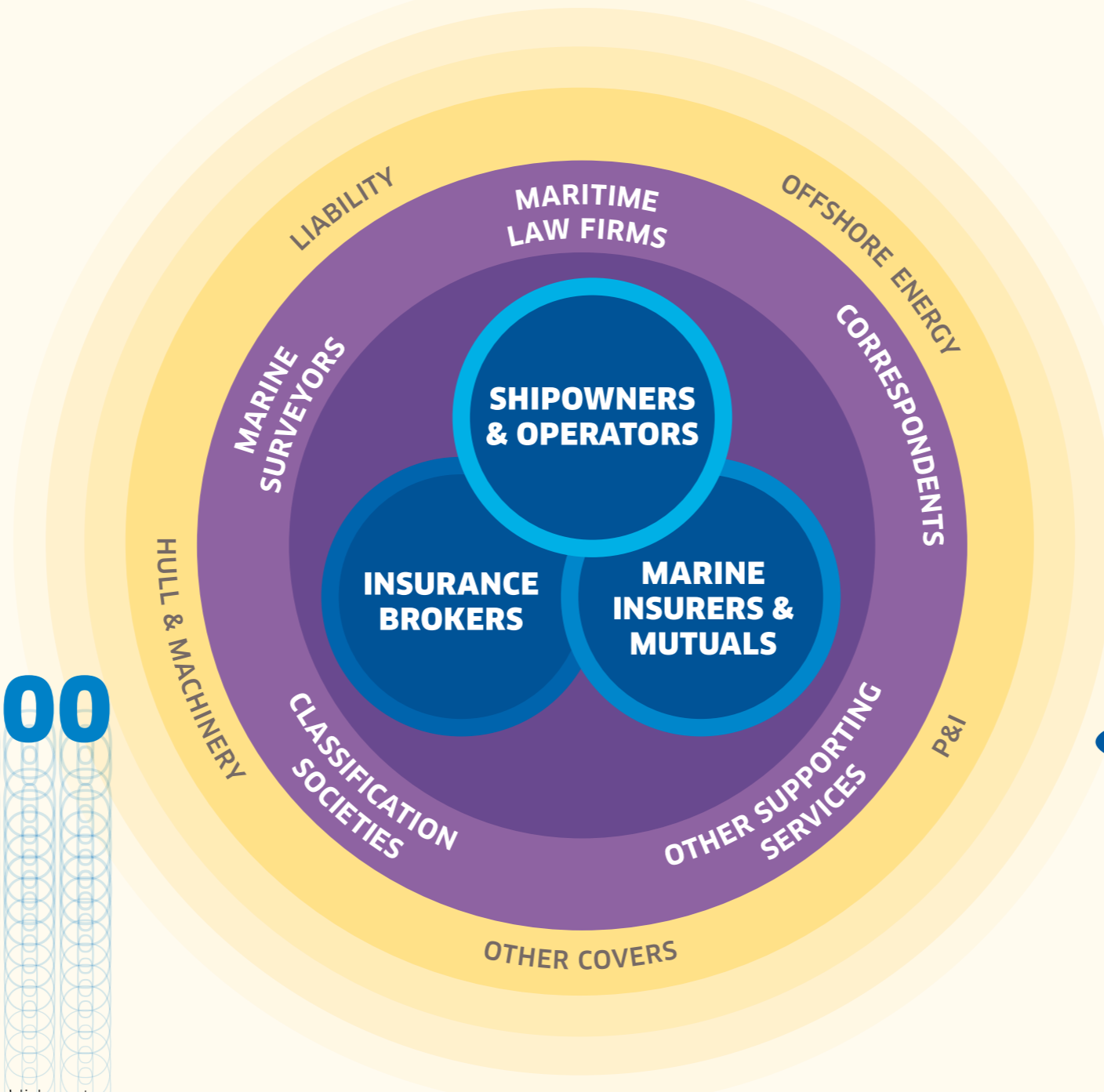
EXTENSIVE BUSINESS NETWORK

Singapore provides you a comprehensive integrated business network of shipowners/operators and maritime service providers:

Over 50 marine (re)insurers and International Group Protection & Indemnity Clubs specialise in covers for various classes, including hull and machinery, liability, offshore energy and P&I.

Over 100 international shipping groups have chosen to manage their strategic and commercial management from Singapore.

Over 5000 maritime establishments employing about 150,000 people have a presence in Singapore and contribute some 7% of Singapore's GDP.



PRO-BUSINESS ENVIRONMENT

Rated by World Bank in 2010 as "the world's easiest place to do business", the Singapore Government ensures a business-friendly environment built upon political stability, a transparent regulatory framework and a conducive business environment.

Singapore welcomes marine insurance players with strong financial positions and risk management expertise to set up in Singapore. You can benefit from assistance programmes and incentives relevant to insurers, reinsurers and insurance brokers writing marine business.

PROXIMITY IN TIME, SPACE & CULTURE

Singapore brings you closer to your clients – in location, time-zone, culture and language:

- Over 182 Cities in 57 countries by air
- Over 600 Ports in 123 countries by sea
- Multi-lingual talent pool, who understands the Asian culture and can effectively communicate to your global clients
- Same time-zone as most Asia Pacific markets to allow you to efficiently and effectively meet the needs of your regional clients

- ±4 HOURS** — Abu Dhabi, Auckland, Dubai, Fiji, Wellington
- ±3 HOURS** — Colombo, Kolkata, Lahore, Chennai, Magadan, Islamabad, New Delhi, Mumbai
- ±2 HOURS** — Adelaide, Almaty, Brisbane, Canberra, Dhakar, Guam, Kathmandu, Melbourne, Port Moresby, Sydney, Yangon
- ±1 HOUR** — Bangkok, Hanoi, Jakarta, Osaka, Sapporo, Seoul, Tokyo
- GMT +8** — **Singapore**, Beijing, Hong Kong, Kuala Lumpur, Manila, Penang, Shanghai, Shenzhen, Taipei



QUALITY LIVING

Singapore is simply great to live and work in:

- Ranked "top for quality of life in Asia" in The Mercer Quality of Living 2009 survey
- Strong expatriate community support
- Over 30 foreign and international schools to cater for children's learning needs

CONTACT DETAILS:



Singapore:

460 Alexandra Road
#19-00
PSA Building
Singapore 119963
T: (65) 6375 1927
F: (65) 6375 1767
www.mpa.gov.sg

London:

Maritime Section
Singapore Centre
Grand Buildings
1-3 Strand
London WC2N 5HR
T: (44) (0) 207 484 2738
F: (44) (0) 207 839 6162



Monetary Authority
of Singapore

Singapore:

10 Shenton Way
MAS Building
Singapore 079117
T: (65) 6225 5577
F: (65) 6225 3261
www.mas.gov.sg

London:

MAS London
Representative Office
1st Floor Old Change House
128 Queen Victoria Street
London EC4V 4BJ
T: (44) (0) 207 332 6300
F: (44) (0) 207 332 6309

New York:

MAS New York
Representative Office
17 State Street
25th Floor
New York, NY 10004
T: (212) 809 1900
F: (212) 809 6067