

**KEPPEL FELS SHIPYARD (PIONEER YARD & CRESCENT YARD) - YF
[FORMERLY KNOWN AS FELS PIONEER and CRESCENT SHIPYARD]**

BERTH	DEPTH A/S (m)	APPROACH DEPTH (m)	LENGTH OF BERTH(m)	REMARKS
(YFQ1) FELS Quay 1	7.6	7.4	200	Shallower depths exist eastwards of the berth
(YFQ2) FELS Quay 2	8.7	9.1	265	
(YFQ3) FELS Quay 3	3.0	7.4	135	
(YFQ4) FELS Quay 4	5.6	5.9	219	See General Information
(YFQ5) FELS Quay 5	4.3	5.9	219	See General Information
(YFQ6) FELS Quay 6	3.1	4.7		For Barges Only
(YFQ7) FELS Quay 7	3.1	4.7		For Barges Only
(YFQ8) FELS Quay 8	3.1	4.7		For Barges Only
(YFADK) Admiral Dock		7.2	380	
YFFP1 FELS Finger Pier 1	7.8	9.1	150	
YFFP2 FELS Finger Pier 2	7.9	8.1	150	
YFFP3 FELS Finger Pier 3	7.7	7.4	150	
YFFP4 FELS Finger Pier 4	5.2	7.2	150	

GENERAL INFORMATION

1. Berths located in slack water.
2. FELS Quay 4 and FELS Quay 5 (which are the former Jurong Marine Base Berths) are located directly opposite Mobil Terminal berths 9 and Berths 3 respectively. These berths are meant for the mooring of oil rigs. See Pilotage guidelines below.
3. FELS Quay 6, 7 and 8 are located at the entrance of Benoi Basin with Quay 6 being the outer and Quay 8 being the innermost berth. These berths are meant for barges only.

4. Please note the existence of submarine cable tunnel located in the close proximity of FELS Crescent Yard (YFQ4 to YFQ8), and submarine cables, gas pipelines located in close proximity of FELS Pioneer Yard (YFFP1 to YFFP4).
5. Vessel's operator, master or person-in-charge, and pilot must immediately contact Port Operations Control Centre if their vessel causes, or is suspected to have caused, any damage to a submarine cable or pipeline or tunnel. Offenders whose vessels damage submarine cables, pipelines and tunnels may be prosecuted.
6. Walkie- talkie pilot/ terminal operating channel - 03
7. No night movement is to be carried out unless permission is obtained from MPA

PILOTAGE GUIDELINES

A. FELS Pioneer Yard

1. BERTHING/UNBERTHING/ DOCKING /UNDOCKING (DAY)

No restriction

2. BERTHING/UNBERTHING /DOCKING/UNDOCKING (NIGHT MOVEMENTS - SUBJECT TO MPA'S APPROVAL)

(a) FELS QUAY NO.1 and 2, FELS FINGER PIER 1 and 2

LOA \leq 230m

No restriction

LOA > 230m

No berthing/unberthing

(b) FELS QUAY NO. 3, FELS FINGER PIER 3 and 4

LOA \leq 122m

No restriction

LOA > 122m

No berthing/unberthing

(c) ADMIRAL DOCK

LOA \leq 230m

No restriction

LOA > 230m

No docking/undocking

B. FELS Crescent Yard

1. BERTHING/UNBERTHING (DAY)

(a) FELS QUAY NO.4

No restriction

(b) FELS QUAY NO. 5

No berthing/unberthing if Quay 4 is occupied by another rig or any vessel.

(c) FELS QUAY NO 6, 7 and 8

No restriction

2. BERTHING/UNBERTHING (NIGHT)

No night movement allowed

C. Berthing Clearance

The table below is the guidelines for the minimum distance to dead end or corner berth such as YFFP4.

LOA OF VESSEL (m)	MINIMUM DISTANCE (m) (TO END OF WHARF)
LOA <150m	15m
LOA >150 to 250m	20m
LOA >250 to 300m	25m
LOA >300 to 350m	30m
LOA >350 to 400m	35m
LOA >400	40m

The table below is the guidelines for the minimum overall clearance between vessels under own power during berthing and unberthing movements.

LOA OF VESSEL (m) (Own Power)	MINIMUM OVERALL DISTANCE (m)
LOA <100m	14m
LOA >100 to 180m	20m
LOA >180 to 220m	30m
LOA >220 to 300m	40m
LOA >300 to 350m	50m
LOA >250 to 400m	60m
LOA >400m	70m

The table below is the guidelines for the minimum overall clearance between vessels under tow during berthing and unberthing movements.

LOA of vessel (m) (Under Tow)	Minimum overall distance (m)
LOA <70m	20m

LOA >70 to 100m	30m
LOA >100 to 140m	40m
LOA >140 to 180m	60m
LOA >180 to 220m	80m
LOA >220 to 300m	100m
LOA >300 to 350m	120m
LOA >350 to 400m	140m
LOA >400m	160m

TUG ASSIGNMENT GUIDELINES

TUG REQUIREMENT FOR SHIPYARD MOVEMENTS

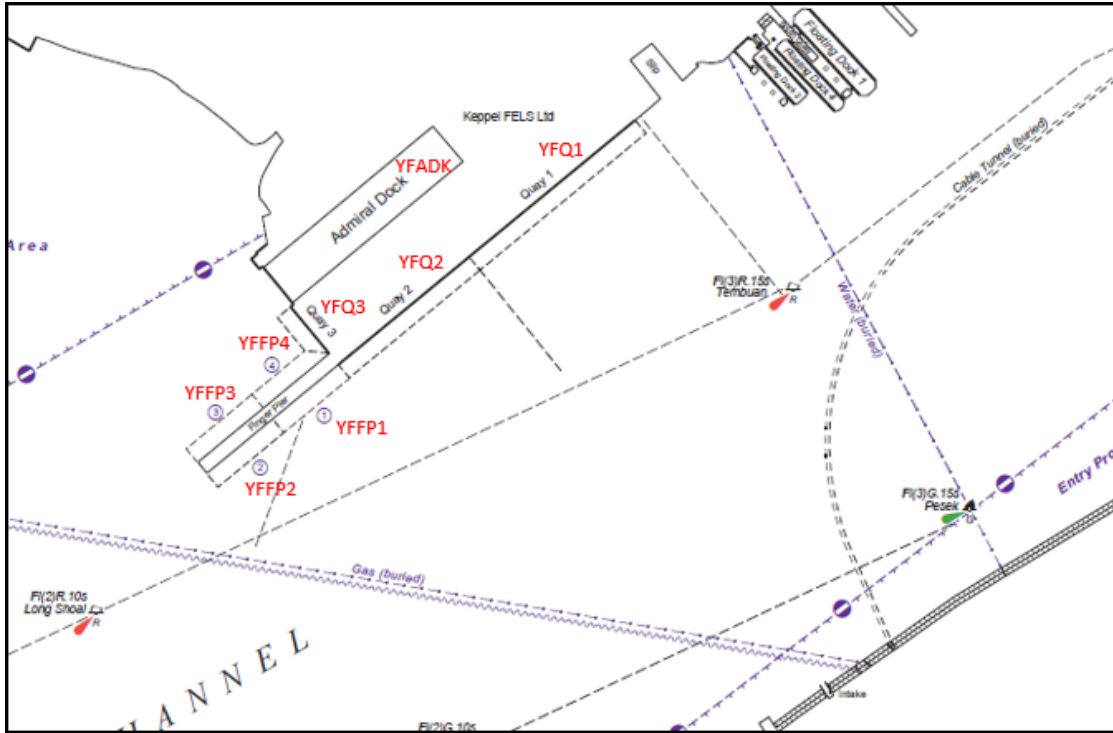
1. The table provides for the number of tugs to be assigned to a vessel when berthing/unberthing or shifting at the shipyard.
2. For vessels proceeding to a Floating Dock or Graving Dock, the shipyard may assign an additional tug.
3. For jack-up oil rigs, 3 suitable big tugs are recommended and for semi-submersibles 4 suitable big tugs are recommended.
4. The pilot may in consultation with the master, cancel or order additional tugs if necessary. For vessels equipped with a suitable thruster in good working condition, one tug at that position may be dispensed with.
5. The shipyard may arrange its own tugs for the movement. Please consult the respective shipyard for advice when ordering tugs.

LENGTH OVERALL OF VESSEL (LOA)	NUMBER OF TUGS FOR VESSELS WITH ENGINES	NUMBER OF TUGS FOR VESSELS UNDER TOW
Up to 60 metres	1 small tug	2 small tugs
61 to 100 metres	2 small tugs	3 small tugs
101 to 130 metres	1 small and 1 medium tug	2 small and 1 medium
131 to 150 metres	2 medium tugs	1 small and 2 medium tugs
151 to 180 metres	2 medium tugs	3 medium tugs
181 to 200 metres	1 medium and 1 big tug	3 medium tugs
201 to 260 metres	1 medium and 2 big tugs	2 medium and 2 big tugs
261metres and above	3 big tugs	2 medium and 3 big tugs

CHARTLET

Chartlet for illustration purposes only, not to be used for navigation. For navigation, mariners are advised to use the appropriate BA nautical charts.

FELS Pioneer Yard



FELS Crescent Yard

