



MARITIME AND PORT AUTHORITY OF SINGAPORE

PORT MARINE NOTICE
NO. 016 OF 2021

17 Mar 2021

Shipping Community
Harbour Craft Community
Pleasure Craft Community

CONSTRUCTION OF JETTY OFF WEST JURONG CHANNEL

Applicable to: Mariners operating in West Jurong Channel

This is a revision of Port Marine Notice No. 059 of 2020. The working period has been extended.

Date : With effect from 23 Mar 2021 to 22 Sept 2021

Location : Off West Jurong Channel, within the working area bounded by the following coordinates (see attached chartlet):

(WGS 84 Datum)

<u>Point</u>	<u>Latitude (N)</u>	<u>Longitude (E)</u>
1	01°17.354'	103°40.825'
2	01°17.404'	103°40.888'
3	01°17.444'	103°41.013'
4	01°17.380'	103°41.051'
5	01°17.272'	103°40.873'

Working Hours : 24 hours Daily, including Sundays and Public Holidays.

<u>Craft</u>	:	<u>Name</u>	<u>Harbour Craft Licence No.</u>	<u>Description</u>
		HSL WB 5180	SR 3358 H	Crane Barge
		OSHIO	ST 1365 G	Tug Boat
		OUNG T6	ST 1548 Z	Tug Boat
		POLLISUM ATHENA	ST 1511 J	Tug Boat
		KM 1	ST 0797 E	Tug Boat
		KM 33	ST 8338 H	Tug Boat
		KM 38	ST 0761 D	Tug Boat / Safety Boat
		ST 0016D	ST 0016 D	Tug Boat
		YAKUSHI MARU NO 5	ST 1405 Z	Tug Boat
		HSL WB 2120	SR 2823A	Work Barge

These craft will exhibit the appropriate local and international day and night signals.

Details : The construction of jetty involves piling work and lifting of construction materials.

A safety boat will be deployed in the vicinity to warn other craft about the works.

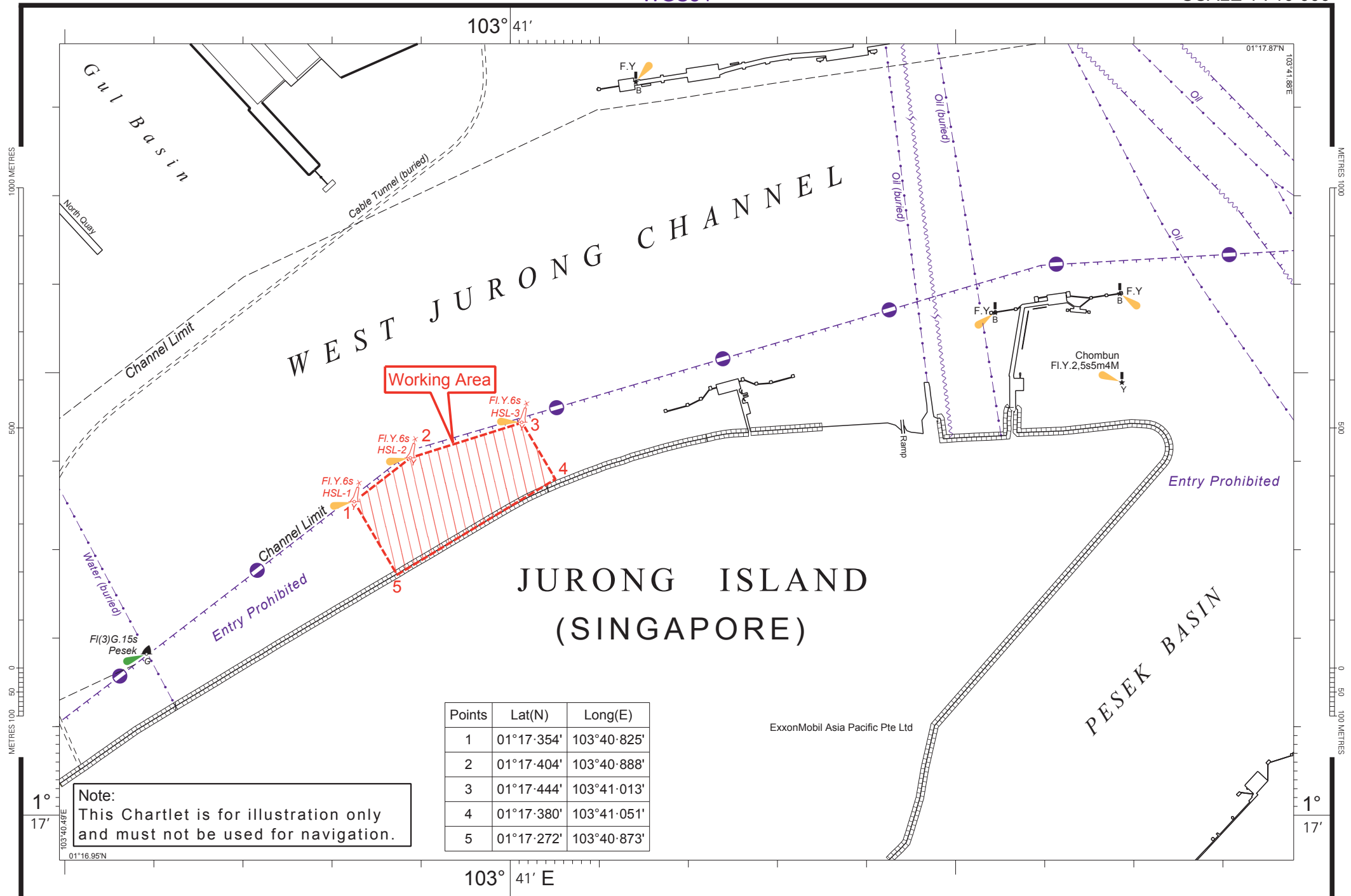
Further enquires relating to the project can be directed to Mr. Lu Maw, Project Engineer, at Tel: (65) 8748 8425 (email: lumaw@sfec.com.sg).

Caution : **When in the vicinity of the working area, mariners are reminded to:**

- a) **Keep well clear of the working area;**
- b) **Maintain a proper lookout;**
- c) **Proceed at a safe speed and to navigate with caution;**
- d) **Maintain a listening watch on VHF Channel 22 (Jurong Control); and**
- e) **Communicate with Jurong Control for assistance, if required.**

Please call Capt. Chong Gi Kian at Tel: (65) 6325 2582 or Marine Safety Control Centre (MSCC) Duty Officer at (65) 6325 2488 for clarification on this Port Marine Notice.

KEVIN WONG
 PORT MASTER
 MARITIME AND PORT AUTHORITY OF SINGAPORE



Points	Lat(N)	Long(E)
1	01°17'354"	103°40'825"
2	01°17'404"	103°40'888"
3	01°17'444"	103°41'013"
4	01°17'380"	103°41'051"
5	01°17'272"	103°40'873"

Note:
This Chartlet is for illustration only
and must not be used for navigation.

ExxonMobil Asia Pacific Pte Ltd