



MARITIME AND PORT AUTHORITY OF SINGAPORE

PORT MARINE NOTICE NO. 020 OF 2021

24 Mar 2021

Shipping Community
Harbour Craft Community
Pleasure Craft Community

RECLAMATION WORK AT PULAU TEKONG

Applicable to: Mariners operating in East Johor Strait off Pulau Tekong

This is a revision of Port Marine Notice No. 063 of 2020. The working period has been extended and the list of craft has been updated.

Date : With effect from 29 Mar 2021 to 28 Sep 2021.

Location : At Pulau Tekong, within the working area bounded by the following co-ordinates (see attached chartlet):

(WGS 84 Datum)

<u>Point</u>	<u>Latitude (N)</u>	<u>Longitude (E)</u>	<u>Mark/ Buoy Light Characteristics</u>
1	01° 25.910'	104° 03.472'	
2	01° 26.260'	104° 03.480'	Yellow/ Pillar/ Fl Y 2s/ Tekong-20
3	01° 26.544'	104° 02.353'	Black/ Yellow/ Pillar/ Q Fl/ Tekong-19
4	01° 26.271'	104° 01.343'	Yellow/ Pillar/ Fl Y 4s/ Tekong-18
5	01° 25.488'	104° 00.444'	Green/ Conical/ Fl (3) G 15s/ Tekong
6	01° 25.167'	104° 00.434'	Yellow/ Black/ Yellow/ Pillar/ Q(9)15s/ West Tekong
7	01° 23.350'	104° 01.057'	Green/ Conical/ Fl G 2s/ Tekong-3
8	01° 20.090'	104° 04.899'	
9	01° 20.090'	104° 05.009'	Yellow/ Black/ Pillar/ Q(6) + LFl 5s/ South Nelayan

10	01° 20.313'	104° 05.215'	
11	01° 20.375'	104° 05.212'	
12	01° 20.752'	104° 04.944'	
13	01° 21.406'	104° 04.608'	
14	01° 21.750'	104° 04.690'	Red/ Can/ FI R 4s/ Red Calder
15	01° 23.489'	104° 05.338'	
16	01° 23.661'	104° 05.391'	Red/ Can/ FI R 10s/ Tekong-22
17	01° 23.985'	104° 05.423'	
18	01° 24.237'	104° 05.408'	
19	01° 24.376'	104° 05.375'	Red/ Can/ FI R 2s/ Tekong-23
20	01° 24.481'	104° 05.260'	
21	01° 24.535'	104° 05.110'	
22	01° 24.310'	104° 01.759'	
23	01° 24.227'	104° 01.665'	
24	01° 24.294'	104° 01.571'	
25	01° 24.574'	104° 01.623'	
26	01° 24.589'	104° 01.772'	

Working Hours : 24 hours Daily, including Sundays and Public Holidays.

Craft : Please refer to **ANNEX** for the list of craft approved for deployment in the working area.

These craft will exhibit the appropriate local and international day and night signals.

Details : Reclamation work will involve filling, dredging and construction of revetment, soil investigation and soil improvement works.

Soil improvement works will entail stabilized dredging, sand piling and deep cement mixing. The dredgers will be used for the bund construction within the working area.

Safety boats will attend all times to warn and direct craft in the vicinity to keep clear of working area.

Any enquiries relating to the project can be directed to Mr. Kim Ji Ho, Deputy Planning Engineer, at Tel: +65 9125 4670, (email: kimjiho@hdec.co.kr).

Caution

: **When in the vicinity of the working area, mariners are reminded to:**

- a) Keep well clear of the working area;**
- b) Maintain a proper lookout;**
- c) Proceed at a safe speed and to navigate with caution;**
- d) Maintain a listening watch on VHF Channel 21 (Sembawang Control); and**
- e) Communicate with Sembawang Control for assistance, if required.**

Please call Capt. Chong Gi Kian at Tel: (65) 6773 7401 or Marine Safety Control Centre (MSCC) Duty Officer at (65) 6325 2488 for clarification on this Port Marine Notice.

CAPT KEVIN WONG
PORT MASTER
MARITIME AND PORT AUTHORITY OF SINGAPORE

RECLAMATION WORK AT PULAU TEKONG - CRAFT APPROVED FOR DEPLOYMENT IN THE WORKING AREA

<u>Name</u>	<u>Harbor Craft License No</u>	<u>Description</u>
LINTAS LAUTAN 231	SR 3986A	Barge
BEE 1	SB 1818I	Bunker Barge
BEE 3	SB 1313F	Bunker Barge
CSM	SB 0748I	Bunker Tanker
CSM 1	SB 0702J	Bunker Tanker
CSM 2	SB 0779I	Bunker Tanker
CSM 2	SB 0779I	Bunker Tanker
GARENE I	SB 3288B	Bunker Tanker
ANTAR KOH 318	SR 3248D	Crane Barge
ANTARA KOH 88	SR 3205J	Crane Barge
AOM 1826	SR 3564E	Crane Barge
AOM 1839	SR 3145C	Crane Barge
B 218	SR 2860F	Crane Barge
CATERMAS 18	SR 3147Z	Crane Barge
CATERMAS 19	SR 3142I	Crane Barge
CATERMAS 22	SR 3163A	Crane Barge
CATERMAS 26	SR 3447I	Crane Barge
CATERMAS 3	SR 1723Z	Crane Barge
CATERMAS 31	SR 3886E	Crane Barge
CATERMAS 9	SR 2706E	Crane Barge
CB 200 04	SR 3908Z	Crane Barge
CB 315	SR 3118F	Crane Barge
CB200-05	SR 3849J	Crane Barge
E T LIFT 1	SR 1925I	Crane Barge
E T OFFSHORE 20	SR 2544E	Crane Barge
ENG TOU 263	SR 2755C	Crane Barge
ENG TOU 276	SR 3048A	Crane Barge
ENG TOU 277	SR 3064C	Crane Barge
ENG TOU 278	SR 3069D	Crane Barge
ENG TOU 279	SR 3109G	Crane Barge
HAYASAKA NO 6	SR 3051A	Crane Barge
HEISEI 7	SR 3184D	Crane Barge
KAKURYU	SR 3218B	Crane Barge
OFFSHORE CRANE NO 2	SR 2763D	Crane Barge
POE 1817	SR1830I	Crane Barge
POLLISUM 1801	SR 3433I	Crane Barge
PTC 7	SR 2968H	Crane Barge
PTC 8	SR 2876B	Crane Barge
SSE DANAKODY	SR 2661A	Crane Barge
SSE IGNATIUS	SR 2988B	Crane Barge
SSE INDIANA	SR 3998E	Crane Barge
TAIRYU GO	SR 3175E	Crane Barge
ANDROMEDA V	SR 2443J	Dredger

BESTLA	SR 3400B	Dredger
DIONE	SR 2326D	Dredger
GREIP	SR 3192E	Dredger
HYUNDAI 16HO	SR 3635H	Dredger
KETAM	SR 1915A	Dredger
KOKUNEMARU 18	SR 3016C	Dredger
TARVOS	SR 2894J	Dredger
TELESTO	SR 3422C	Dredger
TITAN	SR 0858C	Dredger
ENG HUP CHINA	SP 1357Z	Ferry Boat
I SHARK 1	SP 1081C	Ferry Boat
I VIPER I	SP 1432 J	Ferry Boat
I VIPER2	SP 1433I	Ferry Boat
KENKI 18	SP 1289A	Ferry Boat
KENKI 24	SP 1342A	Ferry Boat
KENKI 34	SP 1415J	Ferry Boat
KENKI 39	SP 1440A	Ferry Boat
MCC RESORT I	SP 0736G	Ferry Boat
MCC RESORT II	SP 0746D	Ferry Boat
SINDO EMPRESS	SP 1060J	Ferry Boat
SINDO PRINCESS	SP 1061I	Ferry Boat
YORK 72	SP 0779J	Ferry Boat
YORK ACE	SP 0708A	Ferry Boat
YORK UBIN	SP 8888A	Ferry Boat
ZALIFA	SP 1145C	Ferry Boat
AOM HOPPER 1	SR 3219J	Flat Top Barge
CATERMAS 29	SC 4606C	Flat Top Barge
CATERMAS 30	SC 4645D	Flat Top Barge
DONGAH 202	SC 3946F	Flat Top Barge
E T OFFSHORE 23	SC 3476F	Flat Top Barge
E T OFFSHORE 24	SC 3531B	Flat Top Barge
E T OFFSHORE 26	SC 3615G	Flat Top Barge
E T OFFSHORE 27	SC 3543F	Flat Top Barge
E T OFFSHORE 29	SR 3972A	Flat Top Barge
E T OFFSHORE 30	SR 3968C	Flat Top Barge
E T OFFSHORE 31	SC 4583J	Flat Top Barge
E T OFFSHORE 32	SR 3973Z	Flat Top Barge
E T OFFSHORE 33	SC 4595D	Flat Top Barge
E T OFFSHORE 34	SC 4602J	Flat Top Barge
E T OFFSHORE 36	SC 4748E	Flat Top Barge
E T OFFSHORE 37	SC 4824D	Flat Top Barge
ENG TOU 258	SC 4049T	Flat Top Barge
ET OFFSHORE 35	SC 4740Z	Flat Top Barge
KHB 1205	SC 4717E	Flat Top Barge
KHB 2310	SR 3552A	Flat Top Barge
KHB 2401	SC 4714J	Flat Top Barge
LINTAS LAUTAN 231	SC 4306I	Flat Top Barge
MR 12	SC 3881H	Flat Top Barge
ORION 1803	SC 4100B	Flat Top Barge

ORION 1805	SC 4131B	Flat Top Barge
POLLISUM 1501	SC 4956I	Flat Top Barge
POLLISUM 1501	SC 4956I	Flat Top Barge
PTC DIAMOND 123	SR 3390A	Flat Top Barge
SOON LI 08	SR 3660I	Grab Dredger
SOON LI 18	SR 3661G	Grab Dredger
AOM HOPPER 10	SR 3382J	Hopper Barge
AOM HOPPER 11	SR 3383I	Hopper Barge
AOM HOPPER 12	SR 3435E	Hopper Barge
AOM HOPPER 13	SR 3436C	Hopper Barge
AOM HOPPER 14	SR 3461D	Hopper Barge
AOM HOPPER 15	SR 3460F	Hopper Barge
AOM HOPPER 16	SR 3415J	Hopper Barge
AOM HOPPER 2	SR 3220D	Hopper Barge
AOM HOPPER 20	SR 3514I	Hopper Barge
AOM HOPPER 23	SR 3634Z	Hopper Barge
AOM HOPPER 5	SR 3322G	Hopper Barge
AOM HOPPER 6	SR 3323E	Hopper Barge
AOM HOPPER 8	SR 3311A	Hopper Barge
GEMOK 121	SR 2334E	Hopper Barge
GEMOK 122	SR 3794Z	Hopper Barge
GEMOK 123	SR 3795H	Hopper Barge
GEMOK 124	SR 3816D	Hopper Barge
GEMOK 125	SR 3817B	Hopper Barge
GEMOK 151	SR 2734J	Hopper Barge
GEMOK 152	SR 2774Z	Hopper Barge
GEMOK 153	SR 3222J	Hopper Barge
GEMOK 154	SR 3223I	Hopper Barge
GEMOK 156	SR 3527J	Hopper Barge
GEMOK 157	SR 3611J	Hopper Barge
GEMOK 158	SR 3612I	Hopper Barge
GEMOK 181	SR 3510F	Hopper Barge
GEMOK 4	SR 2883E	Hopper Barge
HS HOPPER 23	SR 3297B	Hopper Barge
HS HOPPER 24	SR 3307C	Hopper Barge
HS HOPPER 25	SR 3313H	Hopper Barge
HS HOPPER 26	SR 3328F	Hopper Barge
HS HOPPER 27	SR 3340E	Hopper Barge
HS HOPPER 28	SR 3347B	Hopper Barge
HS HOPPER 29	SR 3362F	Hopper Barge
HS HOPPER 30	SR 3379J	Hopper Barge
HS HOPPER 31	SR 3391Z	Hopper Barge
HS HOPPER 32	SR 3399E	Hopper Barge
HS HOPPER 33	SR 3419C	Hopper Barge
HS HOPPER 34	SR 3432J	Hopper Barge
HS HOPPER 35	SR 3448G	Hopper Barge
HS HOPPER 36	SR 3457F	Hopper Barge
HS HOPPER 37	SR 3492D	Hopper Barge
HS HOPPER 7	SR 2381G	Hopper Barge

HS HOPPER 8	SR 2382E	Hopper Barge
HS HOPPER 9	SR 2393J	Hopper Barge
MT 12	SR 1821Z	Hopper Barge
MT 14	SR 3155J	Hopper Barge
MT 2	SR 1566J	Hopper Barge
MT 20	SR 3484C	Hopper Barge
SEA GOLD	SR 3418E	Hopper Barge
SL T1	SR 3321I	Hopper Barge
SL T11	SR 3303J	Hopper Barge
SL T12	SR 3581E	Hopper Barge
SL T13	SR 3582C	Hopper Barge
SL T14	SR 3274C	Hopper Barge
SL T2	SR 3579C	Hopper Barge
STL H1	SR 3478I	Hopper Barge
STL H10	SR 3679Z	Hopper Barge
STL H11	SR 3722B	Hopper Barge
STL H12	SR 3712E	Hopper Barge
STL H13	SR 3546G	Hopper Barge
STL H14	SR 3547E	Hopper Barge
STL H15	SR 3592J	Hopper Barge
STL H16	SR 3644G	Hopper Barge
STL H17	SR 3618H	Hopper Barge
STL H18	SR 3614E	Hopper Barge
STL H19	SR 3631E	Hopper Barge
STL H2	SR 3479G	Hopper Barge
STL H20	SR 3642J	Hopper Barge
STL H3	SR 3480J	Hopper Barge
STL H4	SR 3557B	Hopper Barge
STL H5	SR 3559I	Hopper Barge
STL H6	SR 3560B	Hopper Barge
STL H7	SR 3622F	Hopper Barge
STL H8	SR 3641B	Hopper Barge
STL H9	SR 3647A	Hopper Barge
STL II	SR 3043J	Hopper Barge
STL IV	SR 3099F	Hopper Barge
STL V	SR 3119D	Hopper Barge
GEOLAB SAMUDRA 10	SR3825C	Jack-Up Barge
LITA ADVENTURER	SC 4563F	Landing Craft
LITA TRANSPORTER	SC 4168A	Landing Craft
TRANSPORTER 4	SC 3373E	Landing Craft
YORK 202	SC 4028F	Motor Sampan
AQUARIUS EXPRESS 3	SP 1360Z	Passenger Boat
AQUARIUS EXPRESS 6	SP 1406A	Passenger Boat
EH BEE SIN	SP 1302B	Passenger Boat
EH EXPRESS 35	SP 0891F	Passenger Boat
EH SUPERIOR	SP 1012J	Passenger Boat
EH SUPREME	SP 1035Z	Passenger Boat
ENG HUP EXPRESS 33	SP 0794D	Passenger Boat
I ANGEL	SP 1417G	Passenger Boat

I MARLIN	SP 1297B	Passenger Boat
I RAY	SP 1327H	Passenger Boat
I SHARK II	SP 1087B	Passenger Boat
I WHALE	SP 1296D	Passenger Boat
KM HOTEL	SC 6668D	Passenger Boat
KM INDIA	SC 6669B	Passenger Boat
KM JULIET	SC 8999D	Passenger Boat
KM KILO	SC 6006F	Passenger Boat
SC 3878H	SC 3878H	Passenger Boat
STL P3	SP 1404E	Passenger Boat
WATER WORLD 2	SP 1068F	Passenger Boat
ANTARA KOH PB III	SR 0838I	Piling Barge
AOM T1302	ST 1482C	Pusher Tug
PROSPER LOG 1	SC 4057Z	Sludge Barge
ENG TOU 260	SC 4889I	Supply Barge
ENG TOU 271	SC 4895C	Supply Boat
SC 3593B	SC 3593B	Supply Boat
SC 4403F	SC 4403F	Supply Boat
SC 4709D	SC 4709D	Supply Boat
SWIFT 18	SC 4710H	Supply Boat
YORK 101	SC 3917B	Supply Boat
YORK 103	SC 3928H	Supply Boat
YORK 118	SC 3947D	Supply Boat
BP POLDER 2	SC 4831G	Supply Vessel
BP POLDER1	SC 4812J	Supply Vessel
BP TEKONG 1	SC 4926G	Supply Vessel
BP TEKONG 2	SC 4927E	Supply Vessel
Fosta Ruby	SC 4451F	Supply Vessel
KM DELTA	SC 9339H	Supply Vessel
KM EUGENIA	SC 4383H	Supply Vessel
KM GOLF	SC 9009G	Supply Vessel
KM LIMA	SC 6886E	Supply Vessel
KM MIKE	SC 8866A	Supply Vessel
KM NOVEMBER	SC 7788J	Supply Vessel
KM OSCAR	SC 6868G	Supply Vessel
KM PAPA	SC 9292H	Supply Vessel
KM POWER	SC 3797H	Supply Vessel
KM PRESTIGE	SC 3949J	Supply Vessel
KM ROMEO	SC 6000G	Supply Vessel
KM VICTORY	SC 3919I	Supply Vessel
MARINA 1	SC 3962H	Supply Vessel
OPL EXPRESS 1	SC 4797C	Supply Vessel
OPL EXPRESS 2	SC 4798A	Supply Vessel
PESIDENT NINE	SC 4980A	Supply Vessel
-	SC 4887B	Supply Vessel
SWIFT 18	SC 4710H	Supply Vessel
YORK 108	SC 3943A	Supply Vessel
YORK 301	SC 4945C	Supply Vessel
YORK 302	SC 4946A	Supply Vessel

YORK 81	SC 4292J	Supply Vessel
YORK 83	SC 4333A	Supply Vessel
YORK 85	SC 4363C	Supply Vessel
YORK 86	SC 4387J	Supply Vessel
YORK 88	SC 4443E	Supply Vessel
YORK 93	SC 4495H	Supply Vessel
YORK BEST	SC 3810I	Supply Vessel
YORK BRAVO	SC 4084G	Supply Vessel
DE BOUGAINVILLE	LXBD (TCHPMP)	Trailer Suction Hopper Dredger
A RUBY	ST 1397E	Tug Boat
ABADI 5	ST 1444J	Tug Boat
ABADI 6	ST 1225A	Tug Boat
ABADI 8	ST 1219G	Tug Boat
ABADI 9	ST 1235I	Tug Boat
ALPHA JUPITER	ST 1334G	Tug Boat
AOM T1303	ST 1480G	Tug Boat
AOM T1304	ST 1454H	Tug Boat
APS ASSIST	ST 1330D	Tug Boat
ASL BINTANG	ST 1266I	Tug Boat
ASL ENERGY	ST 1095Z	Tug Boat
ASL RAY	ST 1198J	Tug Boat
ASL SHINE	ST 1249I	Tug Boat
ASL TAURUS	ST 0990J	Tug Boat
AT 1202	ST 1507B	Tug Boat
BARLIAN 10	ST 1218I	Tug Boat
BARLIAN 1299	ST 1346J	Tug Boat
BOLIVIAN DOLPHIN	ST 1579Z	Tug Boat
CAPITOL T1601	ST 1258H	Tug Boat
E T HARBOUR 11	ST 0936F	Tug Boat
E T HARBOUR 12	ST 0949H	Tug Boat
E T HARBOUR 15	ST 0970F	Tug Boat
E T HARBOUR 17	ST 1007J	Tug Boat
E T HARBOUR 18	ST 1117D	Tug Boat
E T HARBOUR 19	ST 1126C	Tug Boat
E T HARBOUR 20	ST 1139E	Tug Boat
E T HARBOUR 22	ST 1146H	Tug Boat
E T HARBOUR 23	ST 1155G	Tug Boat
E T HARBOUR 24	ST 1173E	Tug Boat
E T HARBOUR 25	ST 1208A	Tug Boat
E T OCEAN 12	ST 1430J	Tug Boat
E T OCEAN 19	ST 1337A	Tug Boat
E T OCEAN 22	ST 1456D	Tug Boat
E T OCEAN 23	ST 1459I	Tug Boat
EH HARIMAU	ST 1278B	Tug Boat
EH VICTORIOUS	ST 1261H	Tug Boat
ENG HUP ESCORT	ST 1309F	Tug Boat
ENG HUP GAJAH	ST 1471H	Tug Boat
ENG HUP GALLANT	ST 1526I	Tug Boat
ENG HUP POLARIS	ST 1488B	Tug Boat

ENG HUP SUPPORT	ST 1361D	Tug Boat
ENG HUP TENDER	ST 1455F	Tug Boat
ENG HUP VALOUR	ST 1445I	Tug Boat
ENG HUP VIGIL	ST 1527G	Tug Boat
ET HARBOUR 21	ST 1143C	Tug Boat
ET OCEAN 10	ST 1348G	Tug Boat
ET OCEAN 11	ST 1353C	Tug Boat
ET OCEAN 12	ST 1430 J	Tug Boat
ET OCEAN 15	ST 1371A	Tug Boat
ET OCEAN 16	ST 1433E	Tug Boat
ET OCEAN 17	ST 1340A	Tug Boat
ET OCEAN 18	ST 1436Z	Tug Boat
ET OCEAN 20	ST 1386Z	Tug Boat
ET OCEAN 8	ST 1093C	Tug Boat
ET OCEAN 9	ST 1113A	Tug Boat
GLADIATOR	ST 1528E	Tug Boat
GM GLORY	ST 1305C	Tug Boat
GOYU	ST 1260Z	Tug Boat
HARBOUR 10	ST 1566H	Tug Boat
HARBOUR 11	ST 1569B	Tug Boat
HARBOUR 7	ST 1475J	Tug Boat
HARBOUR 8	ST 1518H	Tug Boat
HARBOUR 9	ST 1565Z	Tug Boat
INTAN	ST 1287A	Tug Boat
INTAN T1701	ST 1226Z	Tug Boat
INTAN T1703	ST 1232D	Tug Boat
INTAN T1704	ST 1245F	Tug Boat
KENRYO	ST 1273A	Tug Boat
KM 1	ST 0797E	Tug Boat
KM 20	ST 1284G	Tug Boat
KM 33	ST 8338H	Tug Boat
KM 38	ST 0761D	Tug Boat
KST 31	ST 0871H	Tug Boat
KST 33	ST 0943I	Tug Boat
KST SKY	ST1243Z	Tug Boat
KST SUMMIT	ST1458J	Tug Boat
KUNIMARU	ST 0783E	Tug Boat
MARINA AMAZON 2	ST 1200F	Tug Boat
MARINA EVERJOY	ST 1061E	Tug Boat
MARINA GLORY3	ST 1368A	Tug Boat
MARINA MEGA	ST 1023B	Tug Boat
MARINA MERLION 2	ST 1272C	Tug Boat
MARINA MOBILE	ST 1096H	Tug Boat
MARINA PRINCESS 3	ST 1001A	Tug Boat
OOTORI	ST 1223E	Tug Boat
ORINOCO DOLPHIN	ST 1567F	Tug Boat
ORINOCO DOLPIN	ST 1567F	Tug Boat
ORION 2001	ST 1381I	Tug Boat
ORION 801	ST 1301J	Tug Boat

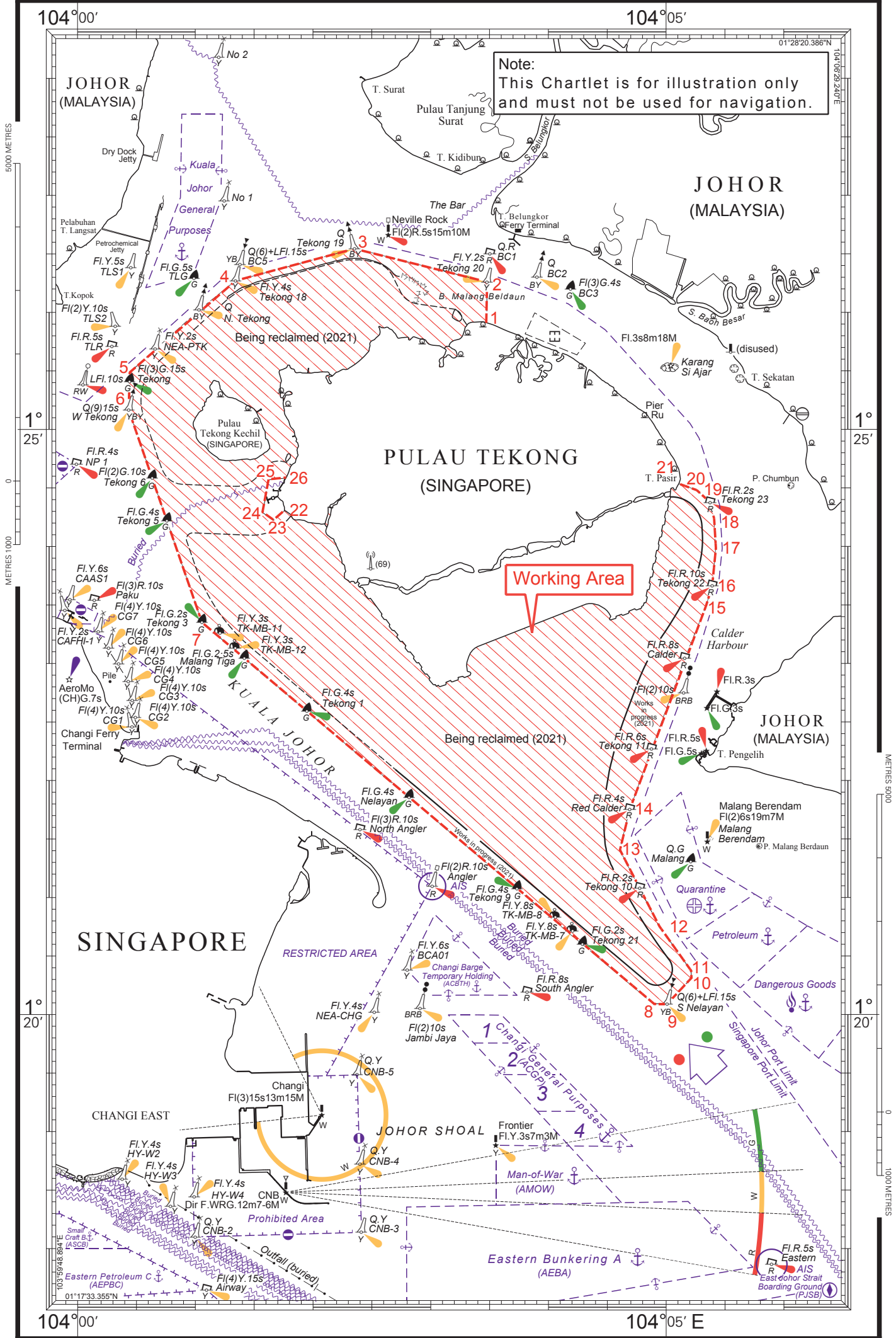
ORION T1202	ST 1364I	Tug Boat
OSHIO	ST 1365G	Tug Boat
OUNG T6	ST 1548Z	Tug Boat
POLLISUM ATHENA	ST 1511J	Tug Boat
PROFIT BRILLIANCE	ST 1584F	Tug Boat
PROFIT MERZK	ST 1411D	Tug Boat
QSA 696	ST 1538B	Tug Boat
QSA PURARI	ST 1277D	Tug Boat
RIKIMARU NO 1	ST 1425D	Tug Boat
SANKO	SR 1229D	Tug Boat
SSE ERICA	ST 1288Z	Tug Boat
SSE EVANKA	ST 1228F	Tug Boat
SSE LUCIA	ST 0661H	Tug Boat
SSE LUCY	ST 0650B	Tug Boat
SSE NATALIE	ST 9191G	Tug Boat
SSE OLGA	ST 2988Z	Tug Boat
SSE OLIVIA	ST 1174C	Tug Boat
-	ST 0016D	Tug Boat
-	ST 0595F	Tug Boat
STL PT 1	ST 1531E	Tug Boat
STL PT 2	ST 1533A	Tug Boat
STL PT 3	ST 1544G	Tug Boat
SUPPORT 1	ST 1434C	Tug Boat
TAIHEI	ST 0890D	Tug Boat
TB500 01	ST 1588I	Tug Boat
TB500 02	ST 1582Z	Tug Boat
TB500 03	ST 1583H	Tug Boat
TOLAK 11	ST 1498Z	Tug Boat
TOLAK 12	ST 1547A	Tug Boat
TOLAK EMPAT	ST 1234J	Tug Boat
TOLAK ENAM	ST 1269C	Tug Boat
TOLAK LIMA	ST 1145Z	Tug Boat
TOLAK SEMBILAN	ST 1256A	Tug Boat
TOLAK TIGA	SR 0883A	Tug Boat
WHALE 5	ST 1549H	Tug Boat
WHALE 7	ST 1592G	Tug Boat
YAKUSHI MARU 5	ST 1405Z	Tug Boat
YEW CHOON 3	ST 1388F	Tug Boat
YEW CHOON1	ST 1414I	Tug Boat
YTC TUG IX	ST 0884Z	Tug Boat
DM 88	SR 3879B	Utility Vessel
PRESIDENT EIGHT	SC 4967D	Utility Vessel
PRESIDENT TEN	SC 4997F	Utility Vessel
PRESIDENT TWELVE	SC 5019B	Utility Vessel
TSS 54	SR 4009F	Utility Vessel
AKT 232	SR 3670F	Work Barge
AKT 233	SR 3719B	Work Barge
AMH 36 05	SR 3835J	Work Barge
AMH 4504	SR 3793A	Work Barge

ANGKAT 25	SR 3139I	Work Barge
ANTARA KOH 288	SR 3121F	Work Barge
AOM 1805	SR 3351J	Work Barge
AOM 1812	SR 3420G	Work Barge
AOM 1815	SR 3455Z	Work Barge
AOM 1824	SR 3128C	Work Barge
AOM 1827	SR 3409F	Work Barge
AOM 1830	SR 3224G	Work Barge
AOM 1835	SR 3352I	Work Barge
AOM 1843	SR 3424Z	Work Barge
AOM 1844	SR 3359F	Work Barge
AOM 1845	SR 3365J	Work Barge
AOM 1847	SR 3473H	Work Barge
AOM 1849	SR 3700A	Work Barge
AOM 1850	SR 3549A	Work Barge
AOM 1852	SR 3636F	Work Barge
AOM 2102	SR 3320J	Work Barge
AOM 2103	SR 3325A	Work Barge
AOM 2105	SR 3332D	Work Barge
AOM 2508	SR 3426F	Work Barge
AOM 2509	SR 3437A	Work Barge
AOM HOPPER 17	SR 3493B	Work Barge
AOM HOPPER 24	SR 3778H	Work Barge
AOM HOPPER 25	SR 3779F	Work Barge
APSG FP 1	SR 3525D	Work Barge
APSG PS 01	SR 3551C	Work Barge
ASL 100	SR 3084H	Work Barge
ASL 1505	SR 2961J	Work Barge
ASL 1506	SR 3085F	Work Barge
AST 1801	SR 3638B	Work Barge
AST 1802	SR 3852J	Work Barge
AST 1833	SR 3191G	Work Barge
AST 2401	SR 3686B	Work Barge
AST 2402	SR 3760E	Work Barge
AST 2403	SR 3667F	Work Barge
B 018	SR 2841Z	Work Barge
B 118	SR 2842H	Work Barge
B 712	SR 3253J	Work Barge
B 812	SR 3254I	Work Barge
BPJV PONTOON 2	SR 2987D	Work Barge
CB 100 01	SR 3902J	Work Barge
CB 100 02	SR 3905E	Work Barge
CB 100-03	SR 3898I	Work Barge
CB 80 01	SR 3872E	Work Barge
CB 80 03	SR 3873C	Work Barge
CB25 02	SR 3882B	Work Barge
CB50 01	SR 3862H	Work Barge
CB50 02	SR 3863F	Work Barge
CCB 215	SR 2829J	Work Barge

CCB115	SR 2828B	Work Barge
CPT11	SR 3168B	Work Barge
DB 1602	SR 3233F	Work Barge
EE FONG 5	SR 2731F	Work Barge
EM MUTIARA	SR 2978J	Work Barge
EM MUTIARA	SR 3978J	Work Barge
ENG TOU 261	SR 2735I	Work Barge
ENG TOU 264	SR 2967Z	Work Barge
ENG TOU 265	SR 3044I	Work Barge
ENG TOU 269	SR 2933E	Work Barge
ENG TOU 272	SR 2974B	Work Barge
ENG TOU 274	SR 3015E	Work Barge
ENG TOU 280	SR 3438Z	Work Barge
ENG TOU 282	SR 3595E	Work Barge
HB 1	SR 3822I	Work Barge
INTAN 108	SR 3511D	Work Barge
INTAN 114	SR 3428B	Work Barge
INTAN 36 07	SR 3721D	Work Barge
INTAN 4002	SR 3414B	Work Barge
KHB 1505	SR 3798B	Work Barge
KHB 1507	SR3799J	Work Barge
KSE SPD 5	SR 3259Z	Work Barge
LINTAS LAUTAN 251	SR 4659D	Work Barge
MMS 001	SR 3847D	Work Barge
OCEANLINK 122	SR 2991B	Work Barge
OUNG 15	SR 3541F	Work Barge
OUNG 16	SR 3335I	Work Barge
OUNG 5	SR 3180A	Work Barge
OUNG 6	SR 3305G	Work Barge
PTC MARINE 3	SR 3441Z	Work Barge
PTC MARINE 8	SR 3450I	Work Barge
SS 2305	SR 3417G	Work Barge
SSE ARIANA	SR 8668A	Work Barge
STL B2402	SR 3711G	Work Barge
STL B5	SR 3520C	Work Barge
STL B6	SR 3532G	Work Barge
STL B7	SR 3517C	Work Barge
STL B8	SR 3537H	Work Barge
STL B9	SR 3543B	Work Barge
STL L1	SR 3624B	Work Barge
STL L2	SR 3625J	Work Barge
STL L3	SR 3705B	Work Barge
STL L4	SR 3695A	Work Barge
STL L5	SR 3729Z	Work Barge
STL L6	SR 3782F	Work Barge
STL WB 1	SR 3569F	Work Barge
STL WB 120 2	SR 3673J	Work Barge
STL WB 1201	SR 3658G	Work Barge
STL WB 180 7	SR 3690J	Work Barge

STL WB 3	SR 3597A	Work Barge
STL WB 4	SR 3598Z	Work Barge
STL WB 5	SR 3599H	Work Barge
STL WB 6	SR 3600E	Work Barge
STL WB2	SR 3558J	Work Barge
TOAJDN 1	SR 2338H	Work Barge
TOAJDN 2	SR 2339F	Work Barge
WINBUILD 2204	SR 2943B	Work Barge
YTC 34	SR 3194A	Work Barge
Zee Otter	SR 3910A	Work Barge
AB 15 01	SR 3932B	Work Boat
AB 2	SR 1494Z	Work Boat
ANCHOR 1	SR 3350B	Work Boat
APSG FP 2	SR 3538F	Work Boat
ASL BEAVER	SR 3651Z	Work Boat
ASL GALLANT	SR 2224A	Work Boat
ASL MAJU	SR 2330B	Work Boat
BP ALERT	SR 3856C	Work Boat
BP DREDGE	SR 3858 Z	Work Boat
BP ENERGIE	SR 3927F	Work Boat
BP HYDRO	SR 3857A	Work Boat
BP HYDRO 2	SR 3891A	Work Boat
BP MINI	SR 3843A	Work Boat
DHI EXPLORER III	SR 2474J	Work Boat
EFFORT 1000	SR 3657I	Work Boat
FOSTA DIAMOND	SR 3921G	Work Boat
KM 7	SR 3535A	Work Boat
KM EUGENIA	SC 4383H	Work Boat
KSE AB 3	SR 3024D	Work Boat
MATA HARI	SR 0074D	Work Boat
OMS 5G	SR 3828H	Work Boat
ONE EFFORT	SR 3627G	Work Boat
OUNG WB1	SR 3869E	Work Boat
PRESIDENT THIRTEEN	SR 3773G	Work Boat
PUTEH KECHIL	SR 3877F	Work Boat
RS INSPIRE	SR 3802D	Work Boat
RS MISSION	SR 3504A	Work Boat
RS RESILIENCE	SR 3815F	Work Boat
RS SYNERGY	SR 3331F	Work Boat
RS VISION	SR 3785J	Work Boat
SAMSON 101	SR 3996I	Work Boat
SR 2851G	SR 2851G	Work Boat
SR 3217D	SR 3217D	Work Boat
SR 3594G	SR 3594G	Work Boat
SR 3666H	SR 3666H	Work Boat
SR 3915B	SR 3915B	Work Boat
SR 3952G	SR 3952G	Work Boat
SSE ANGELINA	SR 2202J	Work Boat
SSE ASHLEY	SR 3363D	Work Boat

SSE HANNA	SR 3853I	Work Boat
SSE MERLYN	SR 6988D	Work Boat
STL P1	SR 3505Z	Work Boat
STL P2	SR 3521A	Work Boat
STL P4	SR 3555F	Work Boat
STL P5	SR 3568H	Work Boat
STL PT4	SR 3860A	Work Boat
SUPREME 20	SR 3508D	Work Boat
YAKUSHI MARU 3	SR 3444D	Work Boat
YEST	SR 2493G	Work Boat
YJP SURVEYORS 1	SR 2635B	Work Boat
YJP SURVEYORS 2	SR 3770B	Work Boat
YJP SURVEYORS 3	SR 3814H	Work Boat
YJP SURVEYORS 4	SR 3821J	Work Boat
YOBYO NO 203	SR 2450C	Work Boat
YOBYO NO 205	SR 2581Z	Work Boat
YOBYO NO 206	SR 3993D	Work Boat
CAST LEO	SR 2305A	Work Boat / Safety Boat



Note:
This Chartlet is for illustration only
and must not be used for navigation.

Working Area