



MARITIME AND PORT AUTHORITY OF SINGAPORE

PORT MARINE NOTICE
NO. 047 OF 2021

16 Jun 2021

Shipping Community
Harbour Craft Community
Pleasure Craft Community

TRANSPORT OF SAND MATERIAL OFF VERY LARGE CRUDE CARRIER ANCHORAGE (AVLCC)

Applicable to: Mariners operating in the vicinity of AVLCC

This is a revision of Port Marine Notice No. 098 of 2020. The working period has been extended with chartlet and list of craft updated.

Date : With effect from 26 Jun 2021 to 25 Dec 2021.

Location : Tuas View Extension, within the working area bounded by the following co-ordinates (see attached chartlet):

(WGS 84 Datum)

<u>Point</u>	<u>Latitude (N)</u>	<u>Longitude (E)</u>
1	01° 13.296'	103° 37.359'
2	01° 13.296'	103° 37.902'
3	01° 13.296'	103° 38.476'
4	01° 12.809'	103° 38.717'
5	01° 12.673'	103° 38.522'
6	01° 12.973'	103° 37.359'

- Working Hours : 24 hours daily including Sundays and Public Holidays.
- Craft : Please refer to **ANNEX** for the list of craft approved for deployment in the working area.
- These craft will exhibit the appropriate local and international day and night signals.
- Details : The work involves transporting and dumping of sand material by self-discharge sand carrier and trailer suction hopper dredgers to the working area.
- A safety boat will be deployed in the vicinity of the working area to warn other vessels of the work.
- Further enquires relating to the project can be directed to Mr. Cheang You Kong, Project Manager, at Tel: +65 9720 3121 (email: cheangyk@xinshaholding.com).
- Caution : **When in the vicinity of the working area, mariners are reminded to:**
- a) Keep well clear of the working area;**
 - b) Maintain a proper lookout;**
 - c) Proceed at a safe speed and to navigate with caution;**
 - d) Maintain a listening watch on VHF Channel 22 (Jurong Control); and**
 - e) Communicate with Jurong Control for assistance, if required.**

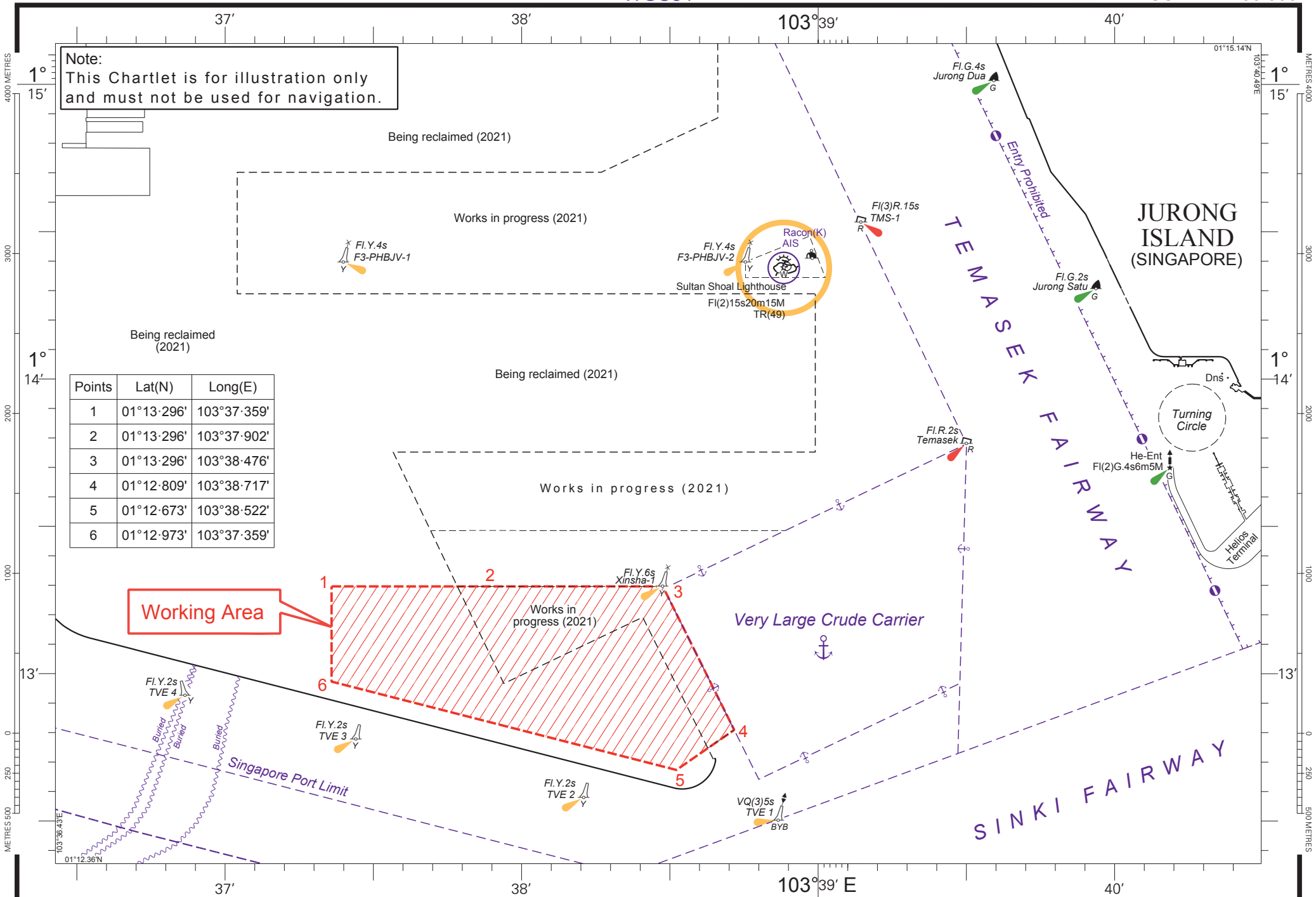
Please call Capt. Chong Gi Kian at Tel: (65) 6773 7401 or Marine Safety Control Centre (MSCC) Duty Officer at +65 6325 2488 for clarification on this Port Marine Notice.

CAPT KEVIN WONG
PORT MASTER
MARITIME AND PORT AUTHORITY OF SINGAPORE

TRANSPORT OF SAND MATERIAL OFF AVLCC-CRAFT APPROVED FOR DEPLOYMENT IN THE WORKING AREA

<u>NAME</u>	<u>Harbour Craft Licence No.</u>	<u>Description</u>
WENDEL MARINE 1	SR 3965I	Barge
WENDEL MARINE 2	SR 3966G	Barge
PTC 7	SR 2968H	Crane Barge
PTC 8	SR 2876B	Crane Barge
SL T1	SR 3321I	Hopper Barge
SL T11	SR 3303J	Hopper Barge
SL T12	SR 3581E	Hopper Barge
SL T13	SR 3582C	Hopper Barge
SL T14	SR 3274C	Hopper Barge
SL T2	SR 3579C	Hopper Barge
SL T3	SR 3580G	Hopper Barge
STL H18	SR 3614E	Hopper Barge
STL H20	SR 3642J	Hopper Barge
STL V	SR 3119D	Hopper Barge
-	SP 9562B	Passenger launch/ Safety Boat
KM GOLF	SC 9009G	Supply Boat
KM POWER	SC 3797H	Supply Boat
KM PRESTIGE	SC 3949J	Supply Boat
ABADI 8	ST 1219G	Tug Boat
ABADI 9	ST 1235I	Tug Boat
ASL RAY	ST 1198J	Tug Boat
BENOI D	ST 0178J	Tug Boat
EL NIDO	ST 1332 J	Tug Boat
ENG HUP GAJAH	ST 1471H	Tug Boat
ENG HUP GALLANT	ST 1526I	Tug Boat
ENG HUP POLARIS	ST 1488B	Tug Boat
ENG HUP TENDER	ST 1455F	Tug Boat
ENG HUP VALOUR	ST 1445I	Tug Boat
INTAN T1704	ST 1245 F	Tug Boat
STL PT 3	ST 1544G	Tug Boat
CB25 02	SR 3882B	Work Barge
FELS 12	SR 1704C	Work Barge
PTC DIAMOND 123	SR 3390A	Work Barge
PTC MARINE 10	SR 3440A	Work Barge
PTC MARINE 3	SR 3441Z	Work Barge
PTC MARINE 8	SR 3450I	Work Barge
STL L6	SR 3782F	Work Barge
STL WB 120 1	SR 3658G	Work Barge
STL WB1	SR 3569F	Work Barge
FELS 12	SR 1704 C	Work Barge
STL L6	SR 3782F	Work Barge
AXCEL SUPREME	SP 1422C	Passenger Launch

DHI EXPLORER 7	SR 3076G	Work Boat
DHI EXPLORER I	SR 2604B	Work Boat
DHI EXPLORER II	SR 2638G	Work Boat
DHI EXPLORER III	SR 2474J	Work Boat
EFFORT 1000	SR 3657I	Work Boat
GEOMETRA SURVEYORS	SR 9525G	Work Boat
KM 7	SR 3535A	Work Boat
RM GEOMETRA	SR 3868G	Work Boat
STL P4	SR 3555F	Work Boat
THOUSAND EFFORT	SR 1951H	Work Boat
YJP SURVEYOR 4	SR 3821J	Work Boat



Note:
This Chartlet is for illustration only
and must not be used for navigation.

Points	Lat(N)	Long(E)
1	01°13'296"	103°37'359"
2	01°13'296"	103°37'902"
3	01°13'296"	103°38'476"
4	01°12'809"	103°38'717"
5	01°12'673"	103°38'522"
6	01°12'973"	103°37'359"

Working Area